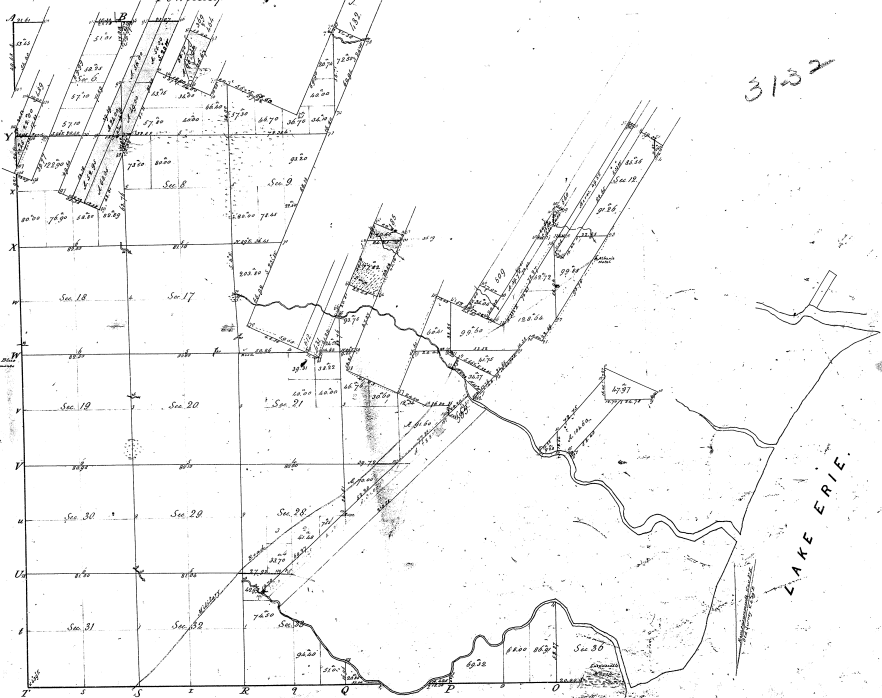


Township N^o 7 S. Range N^o 8 E. Mer. Mich.



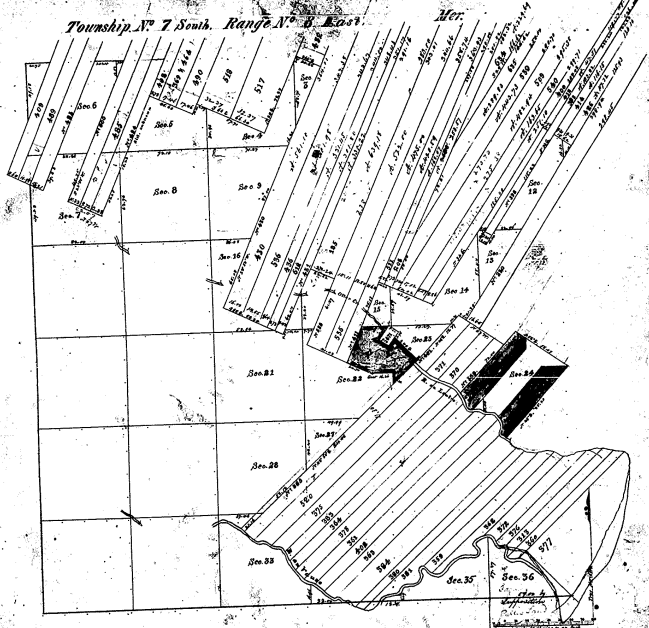
3132-9

Original Survey by J. Hampter in 1820
 Remeasurments by Orange Eldon, D.S. in 1847
 Additional remeasurments by R. Telford, D.S. in 1859

The above Map of Township N^o 7 South, Range N^o 8 East
 of the Principal Meridian Michigan is strictly conformable to the
 field notes of the survey thereon file in this office, which have been
 examined and approved.
 Charles Central, Surveyor
 Detroit, 11th Dec 1859

Township N. 7 South, Range N. 4 East.

Mer.



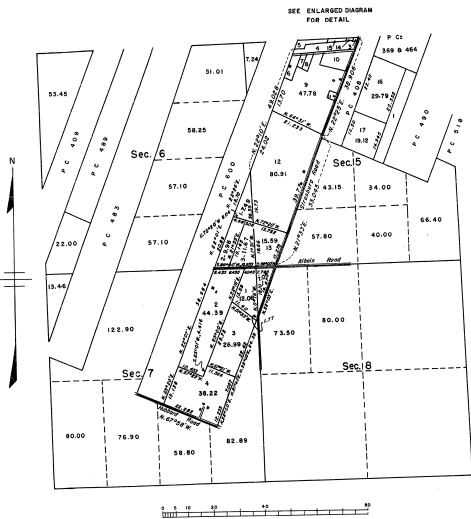
Surveyed in 18... by... Deputy Surveyor

I certify that the above is a true copy of the
 plat in the Office
 Surveyor General's Office
 1871

FRED W. GEORGE GO. B.
 M. H. C.
 "SLIPSHOD AND FIELD NOTES"
 OF M. C. ETC. - 1878-1885

TOWNSHIP 7 SOUTH, RANGE 8 EAST OF THE MICHIGAN MERIDIAN, MICHIGAN

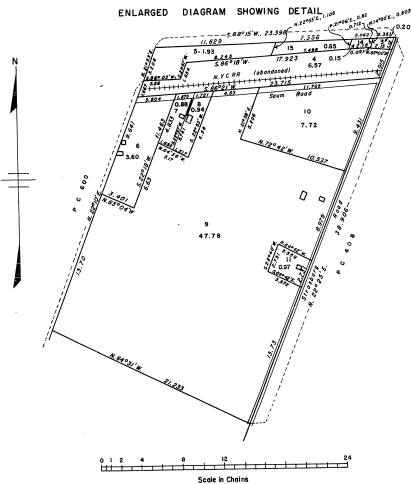
DEPENDENT RESURVEY AND SUBDIVISION OF PUBLIC LANDS
SECTIONS 5, 6, 7 & 8



Area Resurveyed: 374.65 acres

This plat represents the retracement and reestablishment of the boundaries of the 40.00 acre, 55.00 acre and 54.00 acre tracts of sec. 5; the 4.00 acre and 24.00 acre tracts of sec. 6; the 54.00 acre and 60.00 acre tracts of sec. 7; and the 6.00 acre tract of sec. 8, as shown upon the plat approved May 29, 1850 and the subdivision of these tracts. Also, the subdivision of lot 2, sec. 5, as shown upon the plat accepted August 21, 1854.

Survey executed by Hugh B. Crawford, Cadastral Engineer, from October 22, 1893 to October 20, 1904, under Special Instructions dated September 14, 1893 and Supplemental Special Instructions dated August 12, 1904 for Group 61, Michigan. Supplemental measurements to subdivide Lot 2, sec. 5, made June 12, 1905.



UNITED STATES DEPARTMENT OF THE INTERIOR
BUREAU OF LAND MANAGEMENT
Washington, D.C. October 17, 1955

This plat is strictly conformable to the approved field notes, and the survey, having been correctly executed in accordance with the requirements of law and the regulations of this Bureau, is hereby accepted.

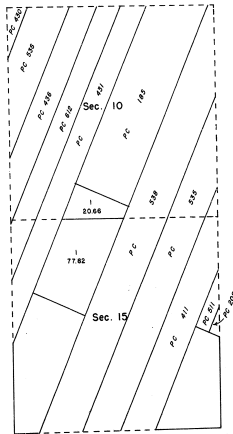
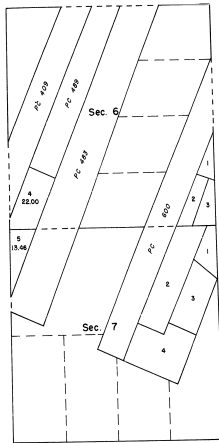
For the Director

Carl B. Livingston
Cadastral Engineering Staff Officer

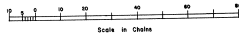
31 2019

31-32

TOWNSHIP 7 SOUTH, RANGE 8 EAST, OF THE MICHIGAN MERIDIAN, MICHIGAN
 SUPPLEMENTAL PLAT, SECTIONS 6, 7, 10, AND 15



This supplemental plat, based upon the plat approved May 29, 1959, and the plat accepted October 17, 1959, has been prepared as an administrative measure to provide lot designations for so much of sections 6, 7, 10, and 15, as have not previously patented.



UNITED STATES DEPARTMENT OF THE INTERIOR
 BUREAU OF LAND MANAGEMENT
 Washington, D. C. January 15, 1969

This plat, showing amended lotting, is based upon the official records, and having been correctly prepared in accordance with the regulations, is hereby accepted.

For the Director
R. Braun

Chief, Division of Engineering

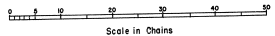
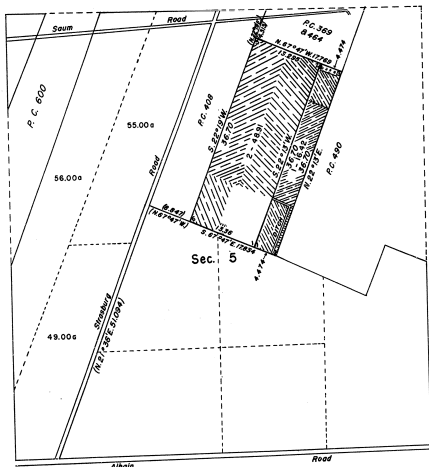
TOWNSHIP 7 SOUTH, RANGE 8 EAST, OF THE MICHIGAN MERIDIAN, MICHIGAN.

DEPENDENT RESURVEY AND SUBDIVISION OF PUBLIC LAND,
SECTION 5

31-32-9

This plat represents the retracement and reestablishment of the boundaries of the 65.02 acre tract of public land in sec. 5, as shown upon the plat approved May 29, 1890 and the subdivision of that tract.

Survey executed by Hugh B. Crawford, Cadastral Engineer, from November 2 to 6, 1953 under Special Instructions for Group 61 dated September 14, 1953.



Area Resurveyed: 65.33 Acres

UNITED STATES DEPARTMENT OF THE INTERIOR
BUREAU OF LAND MANAGEMENT
Washington, D. C., August 11, 1954

This plat is strictly conformable to the approved field notes, and the survey, having been correctly executed in accordance with the requirements of law and the regulations of this Bureau, is hereby accepted.

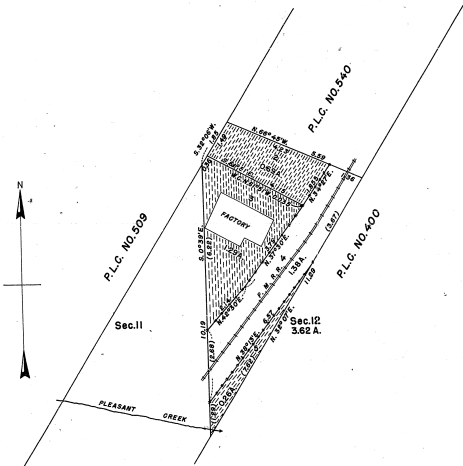
For the Director

Earl G. Harrington
Cadastral Engineering Officer

TOWNSHIP NO.7 SOUTH, RANGE NO.8 EAST, OF THE MICHIGAN MERIDIAN, MICHIGAN.
 SUPPLEMENTAL PLAT, SECTION 12.

31-32

31-32-17



MEMORANDUM.

THIS PLAT DELINEATES THE SUBDIVISION OF PUBLIC LANDS IN LOT 1, SECTION 12, AS SHOWN UPON THE SUPPLEMENTAL PLAT APPROVED MAY 6, 1932, DIVIDING LOTTINGS OF FRACTIONAL ACRES TO ACCOMMODATE APPLICATIONS G. L. O. 08589, AND OTHER CLAIMS AS OCCUPIED.

THE SURVEY WAS EXECUTED PURSUANT TO AUTHORITY CONTAINED IN GENERAL LAND OFFICE LETTER G. L. O. 08569-08590 "C", DATED JANUARY 22, 1942.

FILED
 The Michigan
 a part of
 Received with 141
 Filed in 1942
 State official file
 Made known

SCALE: 1 INCH EQUALS 2 CHAINS.

AREA RESURVEYED, 3.62 ACRES.

LINES DESIGNATED BY WHOM SURVEYED	GROUP NO.	DATE OF SPECIAL INSTRUCTIONS	DATE OF WHEN SURVEYED	
			BEGUN	COMPLETED
SUBDIVISIONAL	49	MAY 7, 1942.	JUNE 11, 1942.	JUNE 13, 1942.

UNITED STATES DEPARTMENT OF THE INTERIOR
 GENERAL LAND OFFICE

DENVER, COLORADO, MAY 29, 1943.
 THIS SUPPLEMENTAL PLAT OF SECTION 12, TOWNSHIP NO. 7 SOUTH, RANGE NO. 8 EAST, OF THE MICHIGAN MERIDIAN, MICHIGAN, IS STRICTLY CONFORMABLE TO THE FIELD NOTES OF THE SURVEY THEREOF, WHICH HAVE BEEN EXAMINED AND APPROVED.

WASHINGTON, D. C., JUNE 9, 1943.
 THE SURVEY REPRESENTED BY THIS PLAT, HAVING BEEN CORRECTLY EXECUTED IN ACCORDANCE WITH THE REQUIREMENTS OF LAW AND THE REGULATIONS OF THIS OFFICE, IS HEREBY ACCEPTED.

Thomson H. Allen
 ACTING ASSISTANT SUPERVISOR OF SURVEYS.

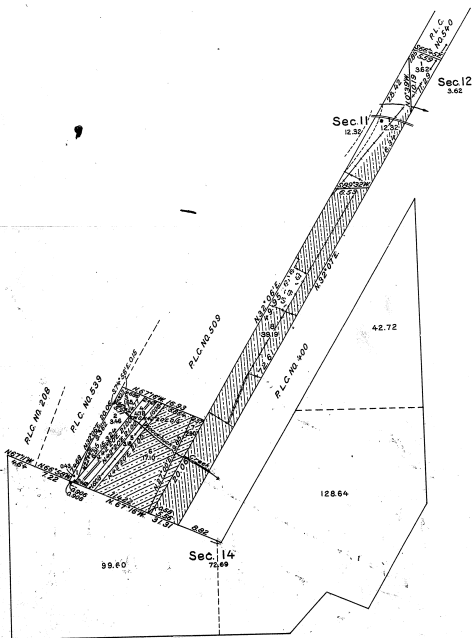
John C. Howell
 ACTING ASSISTANT COMMISSIONER.

TOWNSHIP NO. 7 SOUTH, RANGE NO. 8 EAST, MICHIGAN MERIDIAN, MICHIGAN.

SUPPLEMENTAL PLAT, SECTIONS 11, 12 AND 14.
SCALE: 10 CHAINS TO AN INCH

31-32

31-3-29



MEMORANDUM

THIS PLAT DELINEATES THE DEPENDENT RESURVEY OF PORTIONS OF THE BOUNDARIES OF SECTIONS 11, 12, AND 14, AND OF PRIVATE LAND CLAIMS NOS. 208, 200, 539, AND 540, THE LOTTING OF PUBLIC LAND AREAS IN SECTIONS 11 AND 12, AND THE SUBDIVISION OF PUBLIC LAND AREAS IN SECTION 14, DERIVING LOTTINGS OF FRACTIONAL AREAS TO ACCOMMODATE APPLICATION O.L.C. 9554, EXECUTED BY GUY R. VEAL, U. S. CADASTRAL ENGINEER, FROM OCTOBER 14, 1935, TO APRIL 29, 1935, UNDER SPECIAL INSTRUCTIONS FOR GROUP NO. 55, DATED AUGUST 18, 1932, AUTHORIZED BY THE COMMISSIONER'S LETTER DATED APRIL 12, 1932.

THE PRIVATE LAND CLAIMS WERE SURVEYED BY AARON GREELLY, SURVEYOR OF PRIVATE CLAIMS, IN 1850. THE ORIGINAL SUBDIVISIONAL SURVEY WAS EXECUTED BY JOSEPH WAMPLER, U. S. DEPUTY SURVEYOR, IN 1820, AS SHOWN UPON THE PLAT APPROVED JUNE 12, 1820. CERTAIN RETRACEMENTS AND RESURVEYS WERE EXECUTED BY GRANDE RISDON, U. S. DEPUTY SURVEYOR, IN 1845 AND 1847, AND ADDITIONAL SURVEYS AND RESURVEYS WERE EXECUTED BY R. TOLFOOD AND WILLIAM IVES, U. S. DEPUTY SURVEYORS, IN 1845 AND 1850, AS SHOWN UPON THE PLAT APPROVED MAY 29, 1850.

AREA RESURVEYED: 88.65 ACRES.

OFFICE OF THE U. S. SUPERVISOR OF SURVEYS,
DENVER, COLORADO, MAY 6, 1935.

THE ABOVE SUPPLEMENTAL PLAT OF SECTIONS 11, 12, AND 14, TOWNSHIP NO. 7 SOUTH, RANGE NO. 8 EAST, OF THE MICHIGAN MERIDIAN, MICHIGAN, IS STRICTLY CONFORMABLE TO THE FIELD NOTES OF THE SURVEY THEREOF WHICH HAVE BEEN EXAMINED AND APPROVED.

Wm. H. ...
U. S. SUPERVISOR OF SURVEYS.

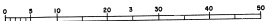
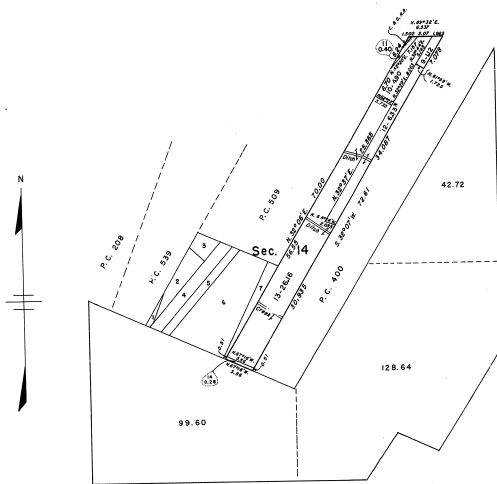
DEPARTMENT OF THE INTERIOR,
GENERAL LAND OFFICE,
WASHINGTON, D. C., June 25, 1935

THE SURVEY REPRESENTED BY THIS PLAT HAVING BEEN CORRECTLY EXECUTED IN ACCORDANCE WITH THE REQUIREMENTS OF LAW AND THE REGULATIONS OF THIS OFFICE, IS HEREBY ACCEPTED.

Antonelli, Frank
ASSISTANT COMMISSIONER.

TOWNSHIP 7 SOUTH, RANGE 8 EAST OF THE MICHIGAN MERIDIAN, MICHIGAN
 SUBDIVISION OF PUBLIC LANDS, SECTION 14

31-32-9



Area Resurveyed: 39.19 Acres

This plat represents the retracement of the boundaries of Lot 9, sec. 14, as shown upon the plat accepted June 25, 1935, and the subdivision of that lot. Surveyed by Hugh B. Crawford, Cadastral Engineer, from July 27 to August 3, 1956, under Supplemental Special Instructions dated August 22, 1956 and July 21, 1955 and Special Instructions dated September 14, 1953, for Group 63, Michigan.

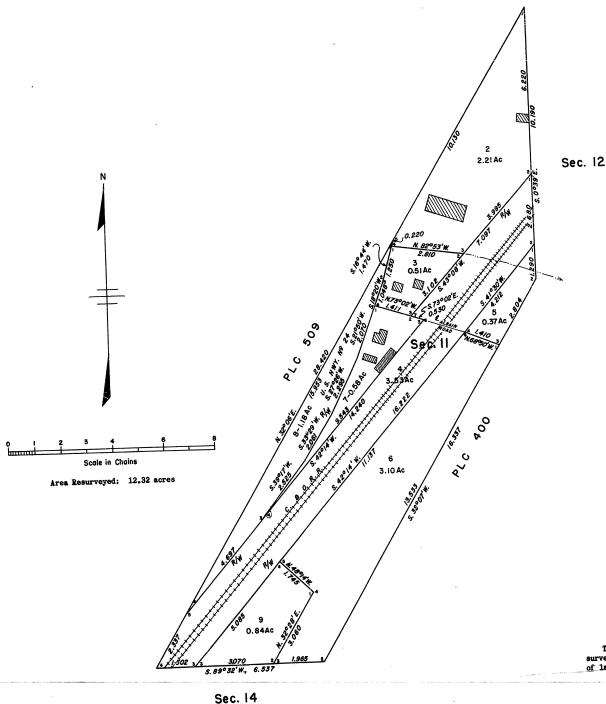
UNITED STATES DEPARTMENT OF THE INTERIOR
 BUREAU OF LAND MANAGEMENT
 Washington, D. C. February 16, 1956

This plat is strictly conformable to the approved field notes, and the survey, having been correctly executed in accordance with the requirements of law and the regulations of this Bureau, is hereby accepted.

For the Director
Earl S. Hamilton
 Cadastral Engineering Staff Officer

31-38-9

TOWNSHIP 7 SOUTH, RANGE 8 EAST OF THE MICHIGAN MERIDIAN, MICHIGAN
 LIMITED DEPENDENT RESURVEY AND SUBDIVISION OF PUBLIC LAND,
 SECTION 11



Sec. 12

This plat represents the retracement of the boundaries of the 25.04 acre tract of public land in sec. 11, as shown upon the plat approved May 29, 1850 and as resurveyed and designated as lot 1, sec. 11, containing 12.32 acres, as shown upon the plat accepted June 25, 1855, and the subdivision of that lot.

Surveyed by Norville E. Shearer, Cadastral Engineer, on September 9 and 10, 1954, under Supplemental Special Instructions dated August 12, 1954 and Special Instructions dated September 14, 1954, for Group 61, Michigan.

UNITED STATES DEPARTMENT OF THE INTERIOR
 BUREAU OF LAND MANAGEMENT
 Washington, D. C. December 29, 1954

This plat is strictly conformable to the approved field notes, and the survey, having been correctly executed in accordance with the requirements of law and the regulations of this Bureau, is hereby accepted.

For the Director
Earl A. Harrington
 Cadastral Engineering Staff Officer

Sec. 14