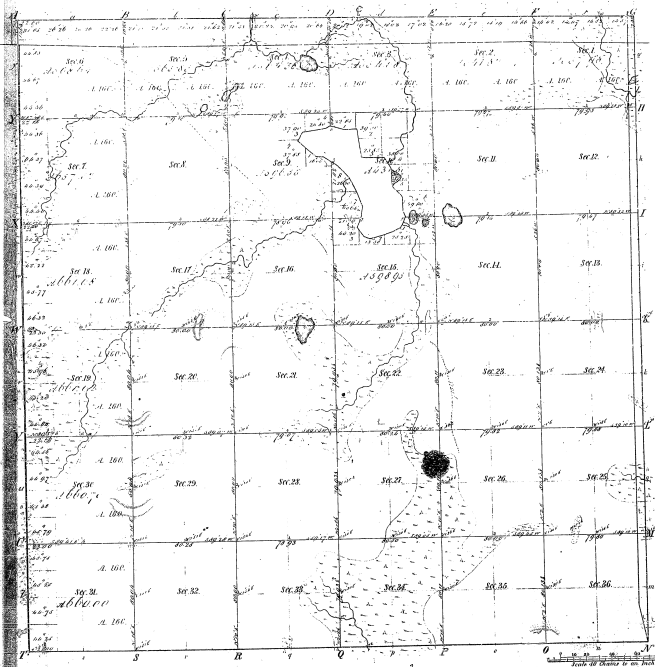


Township 1° 31' N. Range 1° 2' E. Mer. Mich.



Boundaries of
Twp. Townships 1° 31' North Range 1° 2' East Mer. Mich.

20-21

30-31

Plat. 1. Part. by Charles O. Ford

Total number of Acres 22382.20

Survey designated	By Whom Surveyed	Date of Conduct	Amount of Survey	When Surveyed	Money for and at the Survey
1st Survey	James H. Brown	1852 to 1853	5 51 59	1852	1000.00
2d Survey	James H. Brown	1853 to 1854	62 09 77	1853	1000.00

The above Map of Township 1° 31' North of Range 1° 2' East of the Principal Meridian Michigan is a truly and faithful representation of the surveying complete, as the same is represented and approved by the Surveyor General's Office.

Surveyor General's Office
Detroit March 27 1852

Charles O. Ford
Surveyor