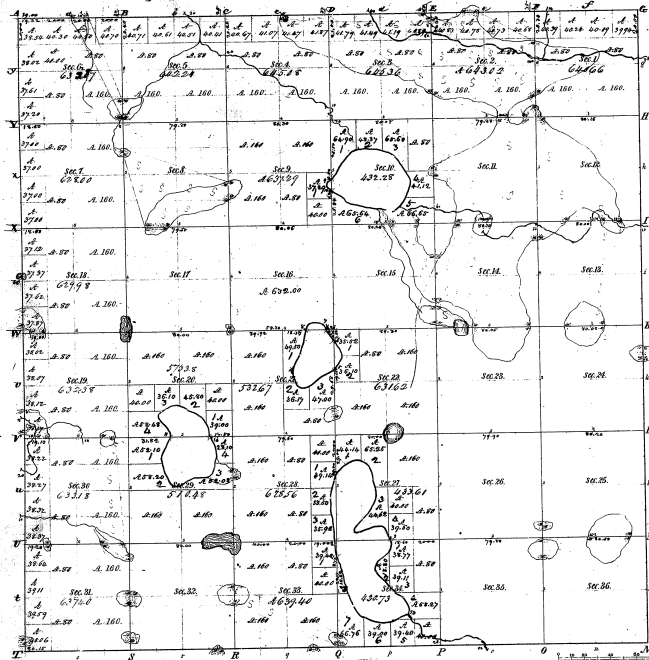


Township No 13 N. Range No 13 West Mer. (Mich.)



Section	Acres	Value
1	360.00	108.00
2	360.00	108.00
3	360.00	108.00
4	360.00	108.00
5	360.00	108.00
6	360.00	108.00
7	360.00	108.00
8	360.00	108.00
9	360.00	108.00
10	360.00	108.00
11	360.00	108.00
12	360.00	108.00
13	360.00	108.00
14	360.00	108.00
15	360.00	108.00
16	360.00	108.00
17	360.00	108.00
18	360.00	108.00
19	360.00	108.00
20	360.00	108.00
21	360.00	108.00
22	360.00	108.00
23	360.00	108.00
24	360.00	108.00
25	360.00	108.00
26	360.00	108.00
27	360.00	108.00
28	360.00	108.00
29	360.00	108.00
30	360.00	108.00
31	360.00	108.00
32	360.00	108.00
33	360.00	108.00
34	360.00	108.00
35	360.00	108.00
36	360.00	108.00

10-29

10-29

Survey designated	By whom surveyed	Date of Contest	Amount of Survey	When Surveyed	Range No and Mer. of the Survey
Township lines	W. M. Wallace	17 July 1837	25 77 75	4-30	1837 3rd of 1838
Subdivisions	W. M. Wallace	25 77 75	74 79 97	5-20	1838 1st of 1839

Total number of Acres 29 6 57.79

This above Map of Township No 13 N. of Range No 13 West Principal Meridian, Michigan is hereby returned to the field notes of the survey thereon on file in this office which have been examined and approved.

Surveyor General's Office, Grand Rapids, Sept 9th 1839

J. R. [Signature] Surveyor Gen'l