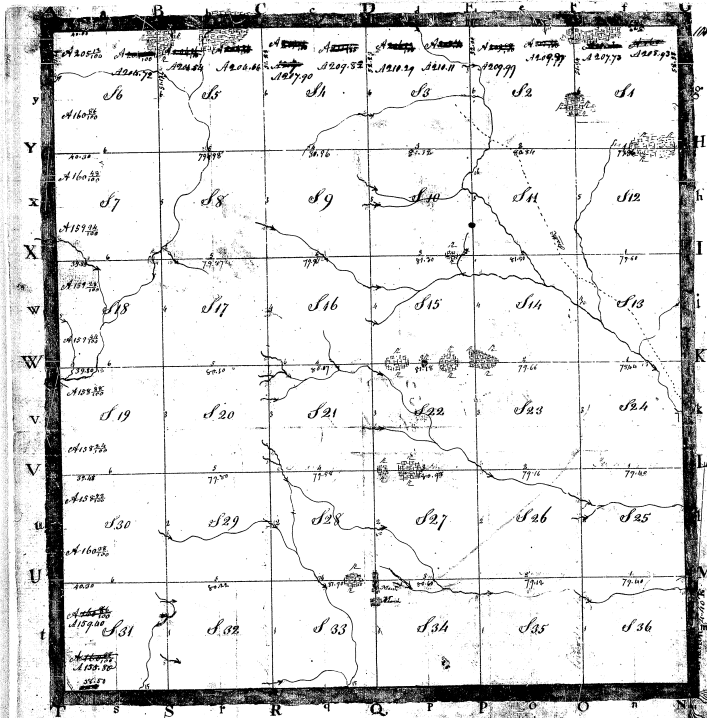


T 2 N R 11 E

27-35

21-35



Township No. 2 North & Range No. 11 East.

Scale 40 Chains to an Inch

*P*ursuant to a contract with and Instructions from, Edward Tiffin Esq. Surveyor General of the United States bearing date the 15th day of August 1816. I have astronomically laid out & surveyed the above described Township: & do hereby certify that the said **MEADERS** bounds both Actual and Abstract as are represented on the plat annexed in the State records thereof are correct: in the flat and the Surveyor General's office.

Witness my hand and the Seal of the Surveyor General's Office at St. Louis this 20th day of August 1816. *E. Tiffin*