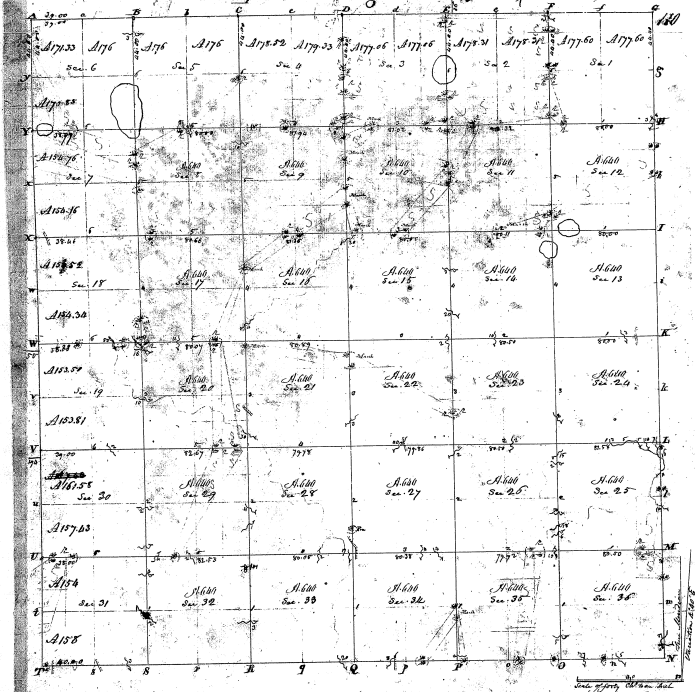


Township N. IV York, Range 3^d W East of the Mer. (Mich. Ter.)



27-21

21-21

Pursuant to Contract with and Instructions from Edward Tiffin Esquire Surveyor general of the
 United States I have measured laid out and surveyed the
 above described Township and do hereby certify that it has such marks both and bounds both a National & actual
 as are thereon set forth as described in the field notes made there and returned with this plat into the
 Surveyor general's office
 Done at St. Louis 1844
 Wm. M. Phelps Del.