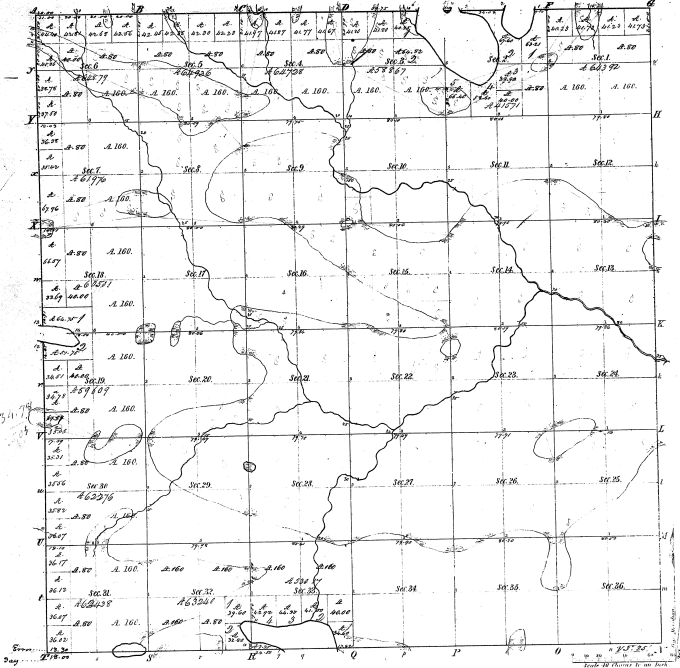


Township N<sup>o</sup> 15 N., Range N<sup>o</sup> 15 West Mer. (Mich.)

10-23



Measurements of Subst.			
Subst.	Course	Dist.	Course
1	N 10° 00' E	8.75	
2	S 75° 00' E	5.25	
3	S 10° 00' E	13.00	
4	S 75° 00' E	13.00	
5	N 10° 00' E	8.75	
6	N 10° 00' E	8.75	
7	S 75° 00' E	5.25	
8	S 10° 00' E	13.00	
9	S 75° 00' E	13.00	
10	N 10° 00' E	8.75	
11	N 10° 00' E	8.75	
12	S 75° 00' E	5.25	
13	S 10° 00' E	13.00	
14	S 75° 00' E	13.00	
15	N 10° 00' E	8.75	
16	N 10° 00' E	8.75	
17	S 75° 00' E	5.25	
18	S 10° 00' E	13.00	
19	S 75° 00' E	13.00	
20	N 10° 00' E	8.75	
21	N 10° 00' E	8.75	
22	S 75° 00' E	5.25	
23	S 10° 00' E	13.00	
24	S 75° 00' E	13.00	
25	N 10° 00' E	8.75	
26	N 10° 00' E	8.75	
27	S 75° 00' E	5.25	
28	S 10° 00' E	13.00	
29	S 75° 00' E	13.00	
30	N 10° 00' E	8.75	
31	N 10° 00' E	8.75	
32	S 75° 00' E	5.25	
33	S 10° 00' E	13.00	
34	S 75° 00' E	13.00	
35	N 10° 00' E	8.75	
36	N 10° 00' E	8.75	
37	S 75° 00' E	5.25	
38	S 10° 00' E	13.00	
39	S 75° 00' E	13.00	
40	N 10° 00' E	8.75	
41	N 10° 00' E	8.75	
42	S 75° 00' E	5.25	
43	S 10° 00' E	13.00	
44	S 75° 00' E	13.00	
45	N 10° 00' E	8.75	
46	N 10° 00' E	8.75	
47	S 75° 00' E	5.25	
48	S 10° 00' E	13.00	
49	S 75° 00' E	13.00	
50	N 10° 00' E	8.75	

10-23

Total number of Acres 22,544.43

Survey Designated	By Whom Approved	Date of Subst.	Amount of Survey	When Surveyed	How Surveyed
Township lines	John W. ...	1837	36.00	1837	1837
Subdivisions	John W. ...	1838	66.44	1838	1838

The above map of Township N<sup>o</sup> 15 North, Range N<sup>o</sup> 15 West of the Principal Meridian, Michigan, is a survey thereon on file in this Surveyor General's Office, and has been examined and approved.

Surveyor General's Office,  
 Grand Rapids Sept 17. 1837

*P. P. ...*

Total on L.S. 7ms. 27/89  
1562

10 23

10-23

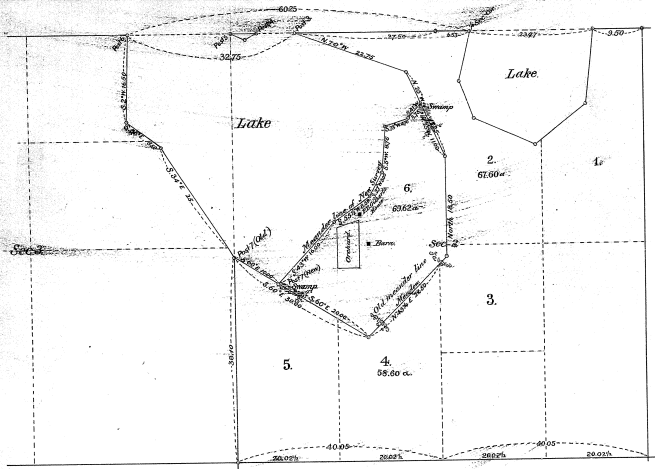


Diagram  
of a  
Piece of Land bordering on  
a lake in  
Sec. 2 T. 15 N. R. 15. W.

Note: The lines, bars, and circles of Ed. Gilbert  
are laid down on this Diagram, as represented  
on Map prepared by the Deputy Surveyor.

Department of the Interior,  
General Land Office,  
February 7, 1889.

I hereby certify that the above is a plat of a Piece of Land  
in Section 2 T. 15 N. R. 15 W. State of Michigan, made in  
accordance with Section 2279, Revised Statutes.

*D. H. Hartung*  
Commissioner and  
State Office Surveyor General of  
Michigan.

P. O.  
1889