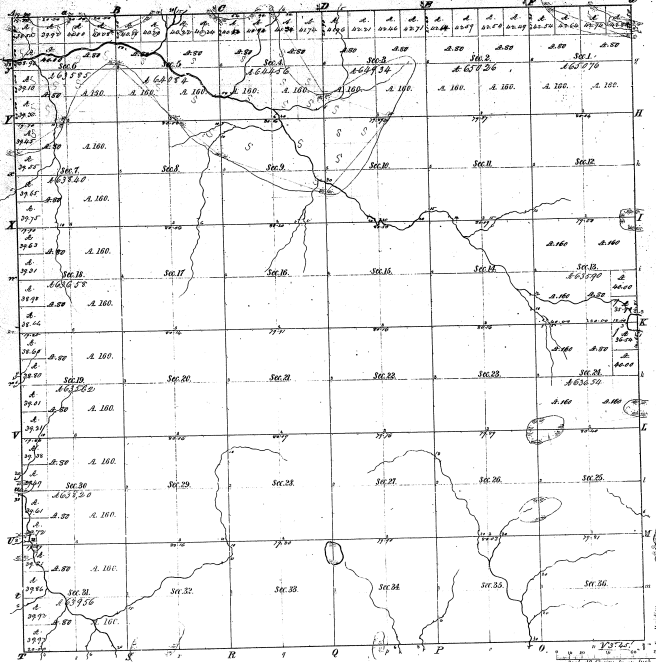


Township N^o 15 N., Range N^o 16 West Mer. (Mich.)



Meanders of a Lake.					
Point	Course	Dist	Point	Course	Dist
1	S 1/2 E	17.70	2	S 1/2 E	17.70
2	S 1/2 E	17.70	3	S 1/2 E	17.70
3	S 1/2 E	17.70	4	S 1/2 E	17.70
4	S 1/2 E	17.70	5	S 1/2 E	17.70
5	S 1/2 E	17.70	6	S 1/2 E	17.70
6	S 1/2 E	17.70	7	S 1/2 E	17.70
7	S 1/2 E	17.70	8	S 1/2 E	17.70
8	S 1/2 E	17.70	9	S 1/2 E	17.70
9	S 1/2 E	17.70	10	S 1/2 E	17.70
10	S 1/2 E	17.70	11	S 1/2 E	17.70
11	S 1/2 E	17.70	12	S 1/2 E	17.70
12	S 1/2 E	17.70	13	S 1/2 E	17.70
13	S 1/2 E	17.70	14	S 1/2 E	17.70
14	S 1/2 E	17.70	15	S 1/2 E	17.70
15	S 1/2 E	17.70	16	S 1/2 E	17.70
16	S 1/2 E	17.70	17	S 1/2 E	17.70
17	S 1/2 E	17.70	18	S 1/2 E	17.70
18	S 1/2 E	17.70	19	S 1/2 E	17.70
19	S 1/2 E	17.70	20	S 1/2 E	17.70
20	S 1/2 E	17.70	21	S 1/2 E	17.70
21	S 1/2 E	17.70	22	S 1/2 E	17.70
22	S 1/2 E	17.70	23	S 1/2 E	17.70
23	S 1/2 E	17.70	24	S 1/2 E	17.70
24	S 1/2 E	17.70	25	S 1/2 E	17.70
25	S 1/2 E	17.70	26	S 1/2 E	17.70
26	S 1/2 E	17.70	27	S 1/2 E	17.70
27	S 1/2 E	17.70	28	S 1/2 E	17.70
28	S 1/2 E	17.70	29	S 1/2 E	17.70
29	S 1/2 E	17.70	30	S 1/2 E	17.70
30	S 1/2 E	17.70	31	S 1/2 E	17.70
31	S 1/2 E	17.70	32	S 1/2 E	17.70
32	S 1/2 E	17.70	33	S 1/2 E	17.70
33	S 1/2 E	17.70	34	S 1/2 E	17.70
34	S 1/2 E	17.70	35	S 1/2 E	17.70
35	S 1/2 E	17.70	36	S 1/2 E	17.70

Total number of Acres 28241					
Survey Designated	By Whom Surveyed	Date of Contract	Amount of Survey	When Surveyed	Area of Survey
Township Area	John A.
Subdivisions

The above Map of Township N^o 15 North, Range N^o 16 West of the Principal Meridian, Michigan, is a true and correct copy of the survey thereon, and is subject to the same conditions as the original survey thereon, which has been examined and approved by the Surveyor General of Michigan, April 25th, 1857.

P. R. Beane Surveyor Genl.

10-24