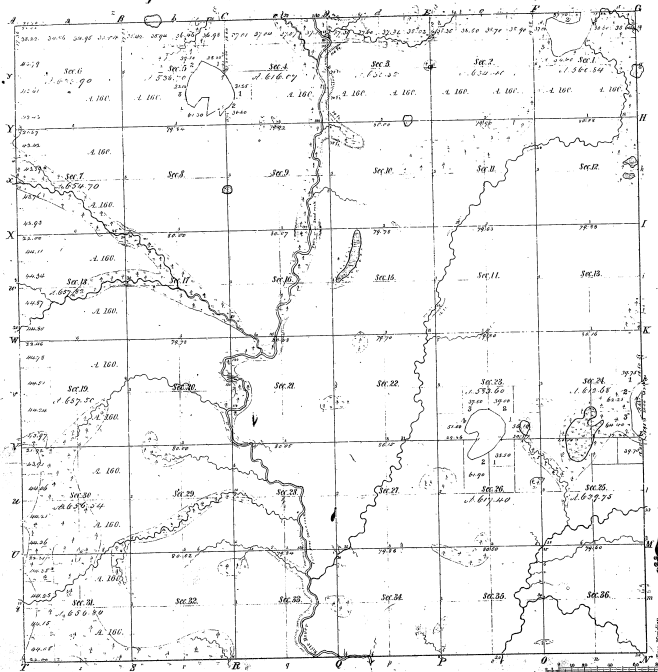


Re-survey
 Township 1° 21' N. Range 1° 5 E. Mer. Mich.



Boundaries of
 Public Lands of the U.S. and Private Courses of the State

21-38	
-------	--

Total number of Acres 22759.52

Survey Disputed	By Whom Disputed	Date of Controversy	Amount of Survey	When Disputed	When Settled	When of the land is in the Survey
Traverse	James H. Brown	July 18 1857	M. C. L. Co.	1857	1858	1858
Subdivision	M. C. L. Co.	July 18 1857	M. C. L. Co.	1857	1858	1858

The above map of Township 1° 21' N. Range 1° 5 E. Mer. Mich. is a true and correct copy of the original survey made in the field under the direction of the Surveyor General of Michigan, and is approved by me.

Surveyor General
 Detroit July 20 1866
 Lewis Lyon, Esq.