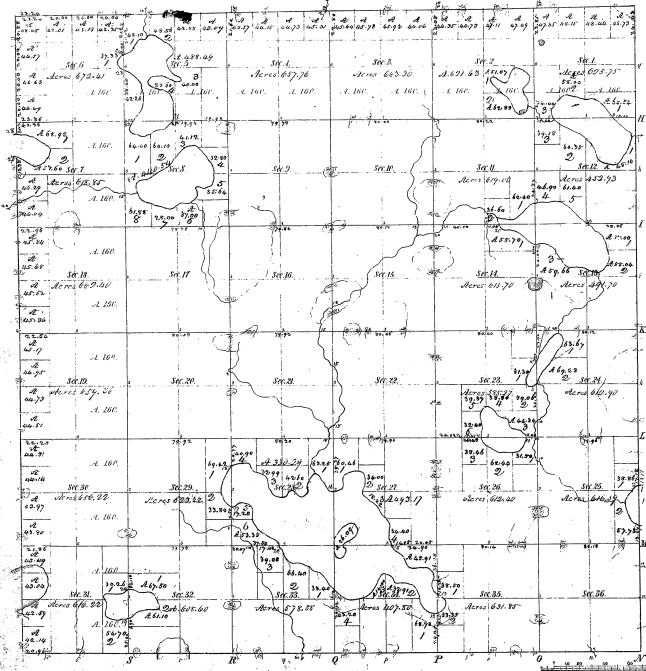


Re-Survey
Township 1st 23rd N. Range 4th E., Mich. Mich.



Meridian is
Post Coaches 1834 Post Coaches 1850 Post Coaches 1858

-21

21-29

Total number of Acres 21,423.23

Township Area	By Whom Surveyed	Date of Contract	Amount of Survey	When Surveyed	Plat filed and when the Survey was
Township Area	Thomas G. Co.	June 18 1855	27 3/4 Secs	2 1/2 yrs	1855 11 th on 1859
Subdivisions	John Mackin	Nov 11 1855	36 Secs	1 yr	1855

The above Map of Township 1st 23rd N. of Range 4th E. East of the Principal Meridian, Michigan, is hereby confirmed to the field notes of the survey thereon on file in the office and has been examined and approved.

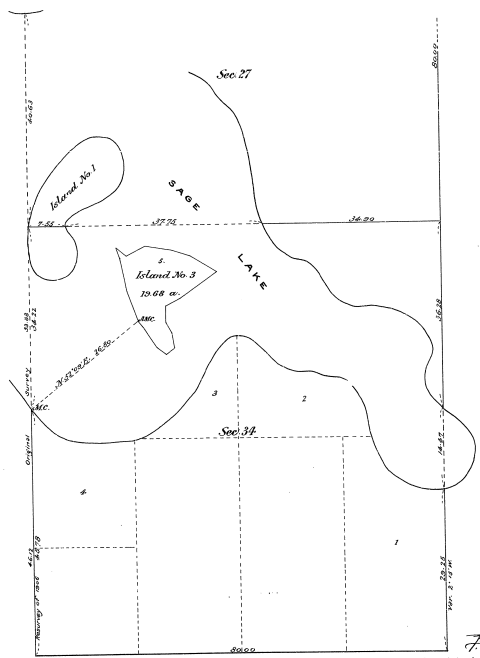
Surveyors General's Office
East Lansing, J. L. 1875

William Johnston
Supt.

SCALE: 10 CHAINS = 1 INCH

21
21-29

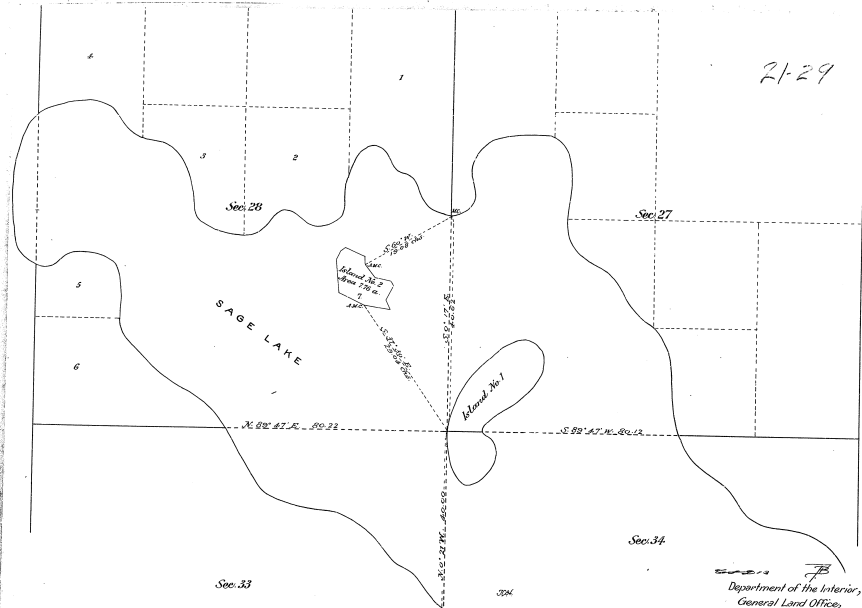
21-29



Department of the Interior,
General Land Office,
Washington, D.C. March 15, 1907.

The above plat of an Island in Sage Lake, in Sec. 34, T₂₃ N., R. 4 E., Mich. Meridian, Michigan, is a correct plat of a survey executed by Sid Carscallen, U.S. Deputy Surveyor, in pursuance of special instructions from the Commissioner of the General Land Office, bearing date May 29, 1906, and is strictly conformable to the field notes of the survey thereof on file in this office, which have been examined and approved.

R. B. Patterson
Commissioner ex officio
U.S. Surveyor General for Michigan.



21-29

21-29 ③

X V 12345

Department of the Interior,
General Land Office,
Washington, D.C., Feb. 19, 1907.

The above plat of an Island in Sage Lake, in Sec. 28, T²³N., R. 4 E., Mich. Meridian, Michigan, is a correct plat of a survey executed by W^m A. Weeks, U.S. Deputy Surveyor, in pursuance of special instructions from the Commissioner of the General Land Office, bearing date April 13, 1905, and is strictly conformable to the field notes of the survey hereof on file in this office, which have been examined and approved.

W. H. Richards
Commissioner in office
U.S. Surveyor General for Michigan