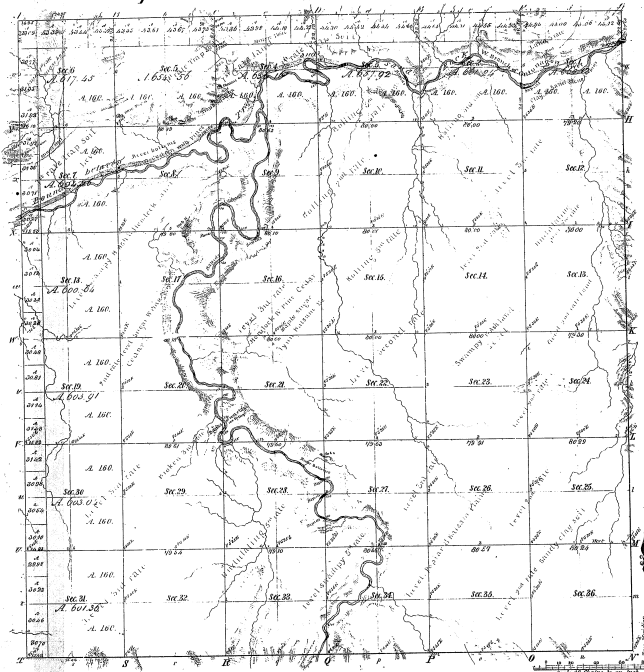


**Township N<sup>o</sup> 49. N. Range N<sup>o</sup> 40 W. Mer. Mich.**



Mileage of		Mileage of		Mileage of	
Post Course	(B&A)	Post Course	(B&A)	Post Course	(B&A)
43	-	8			

43-8

Total number of Acres 22,920.66

Survey Despatched	By Whom Dispatched	Date of Contract	Amount of Survey	When Dispatched	Range, Township and Meridian
Township	W. S. W. W.	May 1. 57. 1867	2 35 1/2	1 2 3/4	1867
Subdivisions	W. S. W. W.	May 1. 1867	19. 66. 96	1 2 3/4	1867

The above Map of Township N<sup>o</sup> 49 North, Range N<sup>o</sup> 40 West of the Principal Meridian Michigan is truly conformable to the field notes of the survey thereon file in this office, which have been examined and approved.

Surveyor General Office,  
Detroit, Decemb. 27. 1868

Deevis Lyon. Sur. Genl.

Received  
June 1. 1869