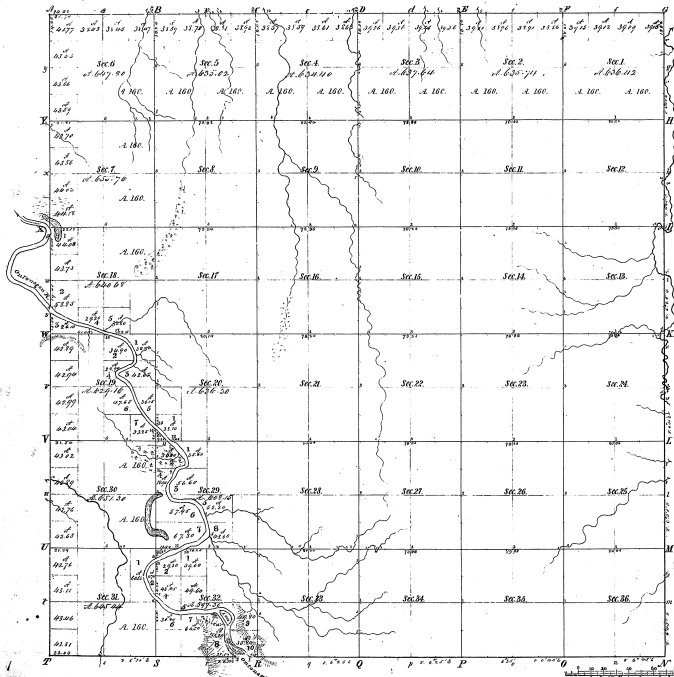


Township 1° 51' N. Range 1° 59' W. Mer. Mich.



| Mileage of |         | Procs. Courses | Dist. (Procs.) | Courses | Dist. (Courses) |
|------------|---------|----------------|----------------|---------|-----------------|
| Procs.     | Courses |                |                |         |                 |
| 1          | 3       |                |                |         |                 |

41-35

Total number of Acres 22971.4

| Survey Designated | By Whom Surveyed | Date of Contract | Amount of Survey | When Surveyed | Quantity of the land set out for the Cont'g. cont' |
|-------------------|------------------|------------------|------------------|---------------|--|
| Durable Area      | Tr. & A. Wood    | Jan. 8, 1854     | M. 825 1/2       | 3rd. yr. 1854 |  |
| Subdivisions      | Do.              | no contract      | 71. 26. 92.      | 50            |  |

The above copy of Township 1° 51' North of Range 1° 59' West of the Principal Meridian Michigan is a copy performed in the field notes of the survey thereof on file in this office which have been examined and approved.

Surveyor General's Office  
 Detroit, March 9, 1856  
 Lewis G. Wood, Surveyor