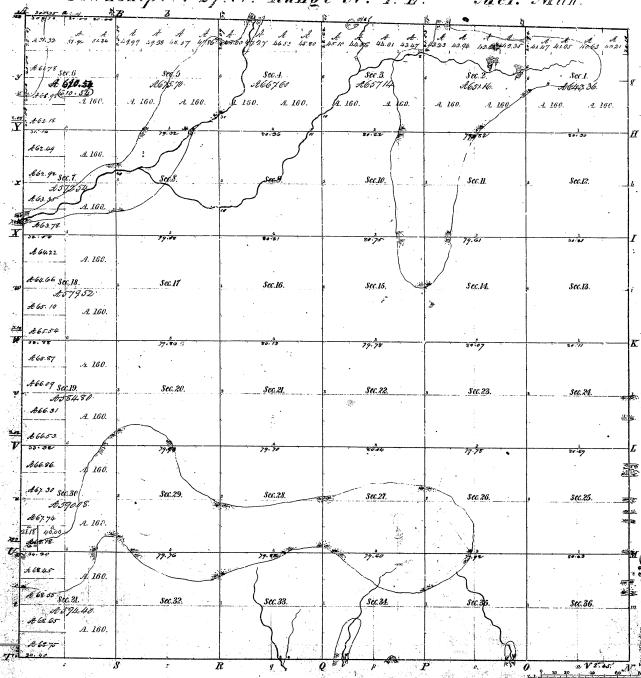


Township 1<sup>o</sup> 27' N. Range 1<sup>o</sup> E. Mer. Mich.



Municipalities											
1850	1860	1870	1880	1890	1900	1910	1920	1930	1940	1950	1960
21-16											
21-16											

Total number of Acres: <b>6,284.74</b>				
Survey Disposition	By Whom Acquired	Date of Conveyance	Amount of Acres	Value Acquired
Donation	State of Michigan	1837	16.00	\$0.00
Indemnity	Michigan State	1837	16.00	\$0.00
Deed	John J. Johnson	1837	6,252.74	\$0.00

This above copy of Township 27 North Range 1 East of the Principal Meridian Michigan is a duly approved plat of the same as shown by the original records and approved by the County Clerk of the County of ... Michigan, this 11th day of ... 1899.

C. J. ...