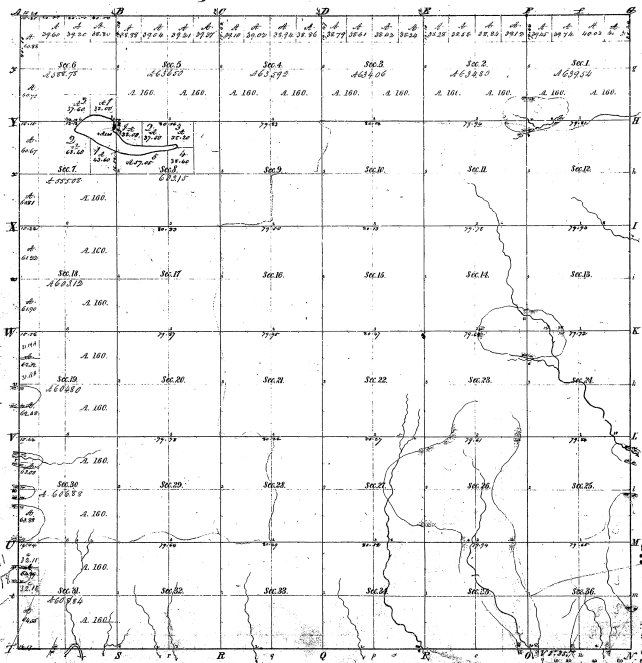


Township N^o 27. N. Range N^o 2. E Mer. Mich.



Measures of a Section 36. 72 8					
Feet	Centers	1/2 in	Centers	1/2 in	Centers
3	12827	9.56			
4	12828	9.56			
5	12829	9.56			
6	12830	9.56			
7	12831	9.56			
8	12832	9.56			
9	12833	9.56			
10	12834	9.56			
11	12835	9.56			
12	12836	9.56			
13	12837	9.56			
14	12838	9.56			
15	12839	9.56			
16	12840	9.56			
17	12841	9.56			
18	12842	9.56			
19	12843	9.56			
20	12844	9.56			
21	12845	9.56			
22	12846	9.56			
23	12847	9.56			
24	12848	9.56			
25	12849	9.56			
26	12850	9.56			
27	12851	9.56			
28	12852	9.56			
29	12853	9.56			
30	12854	9.56			
31	12855	9.56			
32	12856	9.56			
33	12857	9.56			
34	12858	9.56			
35	12859	9.56			
36	12860	9.56			

21-15
21-15

Total number of Acres 66,711.67

Survey Assigned	By Whom Surveyed	Date of Contract	Amount of Survey	When Surveyed	Where the same is to be located
Township	James H. Brown	Aug 11, 1857	66,711.67	1857	Michigan
Subdivisions	William C. Brown	Apr 11, 1857	66,711.67	1857	Michigan

The above copy of Survey of 27th Twp of Range 2^d East of the Principal Meridian Michigan, after survey thereof, is hereby approved and approved by the Surveyor General's Office, Cincinnati, April 10, 1866.

W. C. Brown
Surveyor General