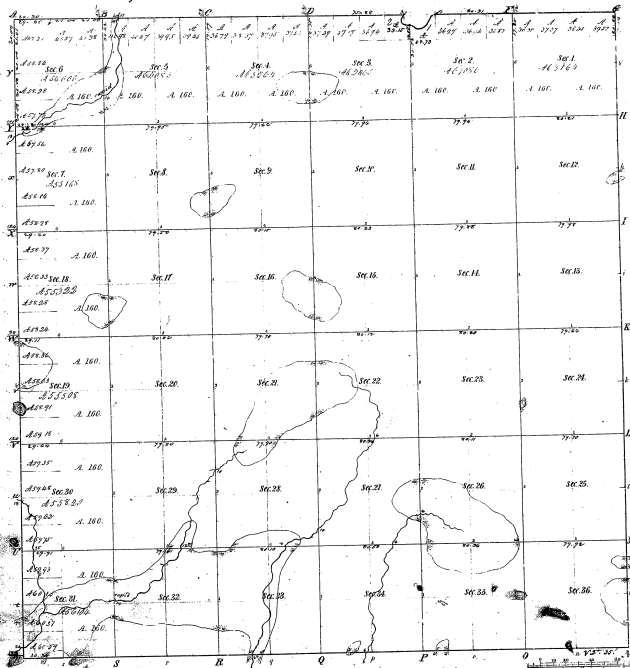


Township 1° 28' N. Range 1° E. Mer. Mich.



Number of acres of a State in 1820

1820	2,500
1821	2,500
1822	2,500
1823	2,500
1824	2,500
1825	2,500
1826	2,500
1827	2,500
1828	2,500
1829	2,500
1830	2,500

21-9

6-12

Total number of acres 2,500 00

Tracts designated	By whom conveyed	Date of Contract	Amount of Survey	When surveyed	Area of land and 1/4 in the Section
Subdivision	William H. Brown	1837	1/4	1837	1/4
Other	John H. Brown	1837	1/4	1837	1/4

The above map of Township 1° 28' North of Range 1° East of the Principal Meridian Michigan is strictly conformable to the field notes of the survey thereon on file in the Office and have been examined and approved.

George Towns Office
Grand Rapids Mich. 25th 1839

G. Towns