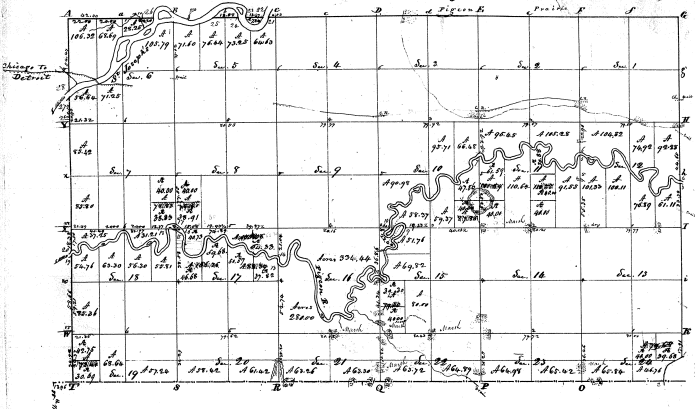


Township N. VIII South, Range N. XII West (McC. Ter.)

237



Contents			Contents		
Section	Area	Value	Section	Area	Value
1	66.4	185.06	17	185.06	185.06
2	66.0	184.36	18	184.36	184.36
3	64.0	181.36	19	181.36	181.36
4	64.0	181.36	20	181.36	181.36
5	64.0	181.36	21	181.36	181.36
6	64.0	181.36	22	181.36	181.36
7	64.0	181.36	23	181.36	181.36
8	64.0	181.36	24	181.36	181.36
9	64.0	181.36	25	181.36	181.36
10	64.0	181.36	26	181.36	181.36
11	64.0	181.36	27	181.36	181.36
12	64.0	181.36	28	181.36	181.36
13	64.0	181.36	29	181.36	181.36
14	64.0	181.36	30	181.36	181.36
15	64.0	181.36	31	181.36	181.36
16	64.0	181.36	32	181.36	181.36
17	64.0	181.36	33	181.36	181.36
18	64.0	181.36	34	181.36	181.36
19	64.0	181.36	35	181.36	181.36
20	64.0	181.36	36	181.36	181.36
21	64.0	181.36	37	181.36	181.36
22	64.0	181.36	38	181.36	181.36
23	64.0	181.36	39	181.36	181.36
24	64.0	181.36	40	181.36	181.36
25	64.0	181.36	41	181.36	181.36
26	64.0	181.36	42	181.36	181.36
27	64.0	181.36	43	181.36	181.36
28	64.0	181.36	44	181.36	181.36
29	64.0	181.36	45	181.36	181.36
30	64.0	181.36	46	181.36	181.36
31	64.0	181.36	47	181.36	181.36
32	64.0	181.36	48	181.36	181.36
33	64.0	181.36	49	181.36	181.36
34	64.0	181.36	50	181.36	181.36
35	64.0	181.36	51	181.36	181.36
36	64.0	181.36	52	181.36	181.36
37	64.0	181.36	53	181.36	181.36
38	64.0	181.36	54	181.36	181.36
39	64.0	181.36	55	181.36	181.36
40	64.0	181.36	56	181.36	181.36
41	64.0	181.36	57	181.36	181.36
42	64.0	181.36	58	181.36	181.36
43	64.0	181.36	59	181.36	181.36
44	64.0	181.36	60	181.36	181.36
45	64.0	181.36	61	181.36	181.36
46	64.0	181.36	62	181.36	181.36
47	64.0	181.36	63	181.36	181.36
48	64.0	181.36	64	181.36	181.36
49	64.0	181.36	65	181.36	181.36
50	64.0	181.36	66	181.36	181.36
51	64.0	181.36	67	181.36	181.36
52	64.0	181.36	68	181.36	181.36
53	64.0	181.36	69	181.36	181.36
54	64.0	181.36	70	181.36	181.36
55	64.0	181.36	71	181.36	181.36
56	64.0	181.36	72	181.36	181.36
57	64.0	181.36	73	181.36	181.36
58	64.0	181.36	74	181.36	181.36
59	64.0	181.36	75	181.36	181.36
60	64.0	181.36	76	181.36	181.36
61	64.0	181.36	77	181.36	181.36
62	64.0	181.36	78	181.36	181.36
63	64.0	181.36	79	181.36	181.36
64	64.0	181.36	80	181.36	181.36
65	64.0	181.36	81	181.36	181.36
66	64.0	181.36	82	181.36	181.36
67	64.0	181.36	83	181.36	181.36
68	64.0	181.36	84	181.36	181.36
69	64.0	181.36	85	181.36	181.36
70	64.0	181.36	86	181.36	181.36
71	64.0	181.36	87	181.36	181.36
72	64.0	181.36	88	181.36	181.36
73	64.0	181.36	89	181.36	181.36
74	64.0	181.36	90	181.36	181.36
75	64.0	181.36	91	181.36	181.36
76	64.0	181.36	92	181.36	181.36
77	64.0	181.36	93	181.36	181.36
78	64.0	181.36	94	181.36	181.36
79	64.0	181.36	95	181.36	181.36
80	64.0	181.36	96	181.36	181.36
81	64.0	181.36	97	181.36	181.36
82	64.0	181.36	98	181.36	181.36
83	64.0	181.36	99	181.36	181.36
84	64.0	181.36	100	181.36	181.36

Surveyed in May & June 1825 by Robert Clark of C. L. Date as above on map

157

