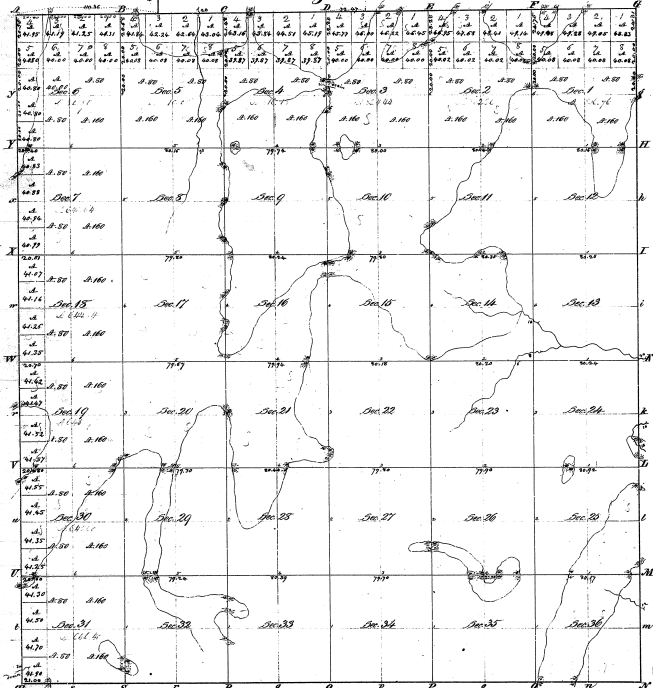


Township N^o 10 North, Range N^o 15 East Mer. (Mich.)



26-0
26-3

Survey	date	By whom	range	Acres of District	Acres of Town	Mer. Survey	Mer. Range	Mer. Township
Stony Creek	1833	Stony Creek	15	15	15	15	15	15
Stony Creek	1833	Stony Creek	15	15	15	15	15	15
Stony Creek	1833	Stony Creek	15	15	15	15	15	15
Stony Creek	1833	Stony Creek	15	15	15	15	15	15

The above Map of Township N^o 10 North, of Range N^o 15 East of the Meridian, Michigan Territory, is which conformable to the field notes of the Survey of the said Township, which have been examined and approved by the Surveyor General of the Territory.

Wm. H. P. Mason
Surveyor General