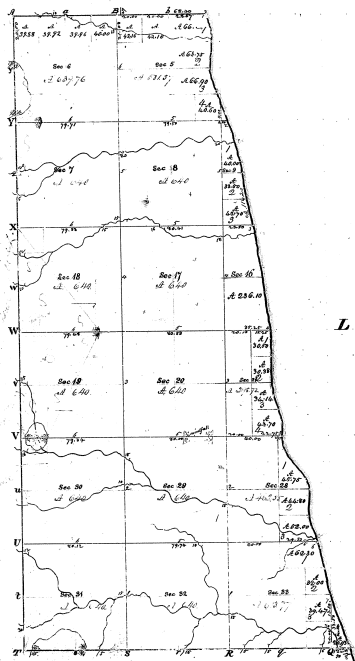


Township N^o 13 N. Range N^o 16 E. Mer.



LAKE HURON.

Mentions of			
Tract	Contents	Acres	Tract
5	A 1207	34.4	
	A 112	11.64	
6	A 122	12.8	
	A 125	11.72	
	A 128	12.8	
	A 129	12.8	
	A 130	12.8	
	A 131	12.8	
	A 132	12.8	
	A 133	12.8	
	A 134	12.8	
	A 135	12.8	
	A 136	12.8	
	A 137	12.8	
	A 138	12.8	
	A 139	12.8	
	A 140	12.8	
	A 141	12.8	
	A 142	12.8	
	A 143	12.8	
	A 144	12.8	
	A 145	12.8	
	A 146	12.8	
	A 147	12.8	
	A 148	12.8	
	A 149	12.8	
	A 150	12.8	

25-28

25-28

Survey Designated	By Whom Surveyed	Date of Contract	Amount of Survey	Total number of acres	
				Surveyed	Not Surveyed
Subdivision	John C. Gray	Aug. 21, 1834	27.77	1.23	29.00
Traverse line	Henry Parker	25th Dec. 1835	11.00	16.77	27.77

The above map of Township N^o 13 North, of Range N^o 16 East of the Principal Meridian, Me. T. is hereby referred to the field notes of the survey thereof in file in this office which have been examined and approved.

Surveyor General's Office,
Cincinnati, Me. 20th Dec. 1836

M. T. Williams
Chief Clerk