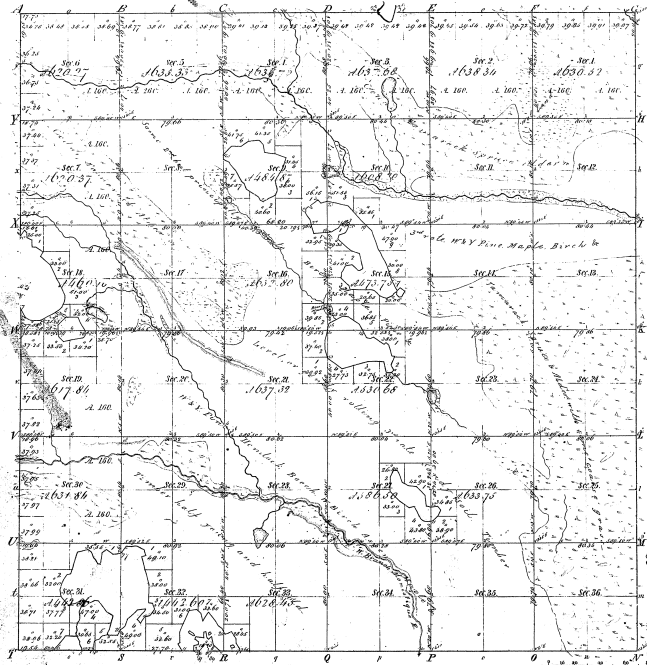


Township. 1^o 44. N. Range. 1^o 17. W. Mer. Mich.



Acreage of	
Probs. C.	Probs. D.
31-2	
22 ac. 33 l.	

87-21

Total number of Acres 216.48 11

Survey described	By whom Surveyed	Date of Contract	Amount of Survey	When Surveyed	Where for location
Township lines	R. A. Base	April 1 st 1835	75 1/2 3/4	Sept. 1835	for loc'n
Subdivisions	McClown & Co.	April 20 1835	75 85.55	1 st Dec. 1835	for loc'n

The above Map of Township 44 North of Range 17 West of the Principal Meridian Michigan is a truly correct and to the best of my knowledge and belief is the true and correct map of the survey thereon on file in this Office, which has been examined and approved.
 (Surveyor General's Office)
 Charles A. Tolle
 Surveyor General
 Detroit March 5 1851

James G. ...