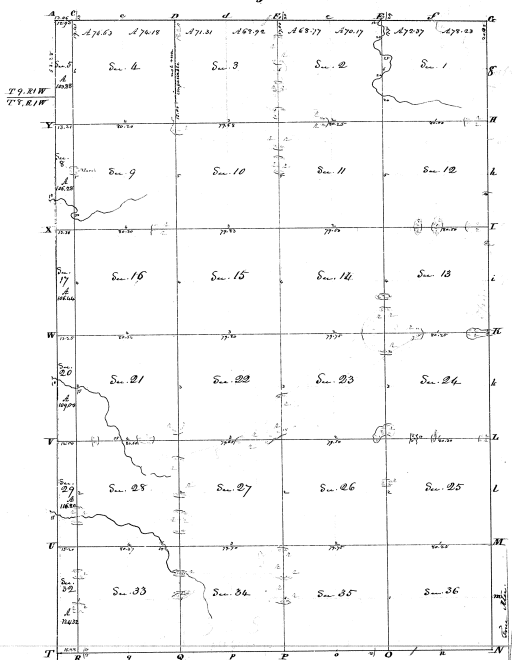


Township N. VIII North, Range N. East Mer. (Misc. Ter.)



Sections	Acres	Sections	Acres
1	79.23	19	60.0
2	80	20	60.0
3	77.27	21	60.0
4	80	22	60.0
5	82	23	60.0
6	79.17	24	60.0
7	80	25	60.0
8	80.77	26	60.0
9	80	27	60.0
10	80	28	60.0
11	80	29	60.0
12	80	30	60.0
13	80	31	60.0
14	80	32	60.0
15	80	33	60.0
16	80	34	60.0
17	80	35	60.0
18	80	36	60.0
19	80		
20	80		
21	80		
22	80		
23	80		
24	80		
25	80		
26	80		
27	80		
28	80		
29	80		
30	80		
31	80		
32	80		
33	80		
34	80		
35	80		
36	80		
Total	2867.32		

29-9

29-9

Surveyed in March 1831

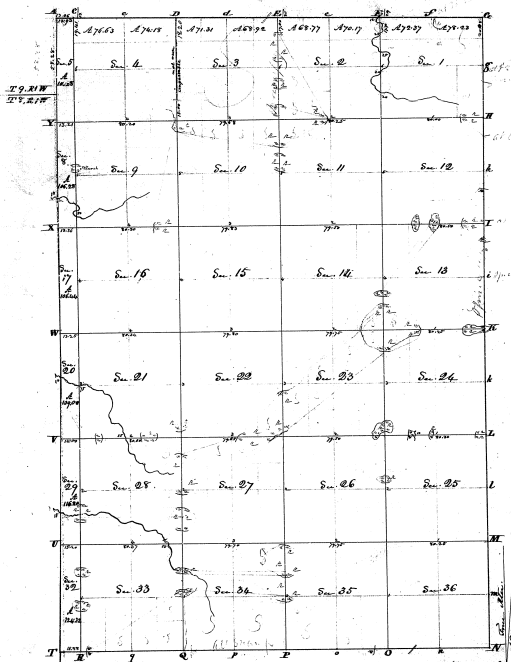
by Robinson Thomas, et al.

The above Map of Township N. VIII North, Range N. East Mer. is a true and correct copy of the original
 original (which was) as actually represented to the field notes of the Survey
 made in 1831 in this Office, which have been examined & approved.
 Surveyor General's Office,
 Cincinnati: Aug. 5. 1832

M. T. Williams
 Sur. Genl.

171

Township N. VIII North, Range N. East Mer. (McDon.)



Surveyed in March 1831

By Robinson Thomas, C. S.

The above map of Township N. VIII North, Range N. East Mer. (McDon.) is hereby confirmed to the satisfaction of the Surveyor General in this Office, which have been examined & approved.

Surveyor General's Office,
Washington, D. C., 1831

Sections		Acres	Sections	Acres
N. E. 1	1	36.00		
S. E. 1	2	36.00		
N. W. 1	3	36.00		
S. W. 1	4	36.00		
N. E. 2	5	36.00		
S. E. 2	6	36.00		
N. W. 2	7	36.00		
S. W. 2	8	36.00		
N. E. 3	9	36.00		
S. E. 3	10	36.00		
N. W. 3	11	36.00		
S. W. 3	12	36.00		
N. E. 4	13	36.00		
S. E. 4	14	36.00		
N. W. 4	15	36.00		
S. W. 4	16	36.00		
N. E. 5	17	36.00		
S. E. 5	18	36.00		
N. W. 5	19	36.00		
S. W. 5	20	36.00		
N. E. 6	21	36.00		
S. E. 6	22	36.00		
N. W. 6	23	36.00		
S. W. 6	24	36.00		
N. E. 7	25	36.00		
S. E. 7	26	36.00		
N. W. 7	27	36.00		
S. W. 7	28	36.00		
N. E. 8	29	36.00		
S. E. 8	30	36.00		
N. W. 8	31	36.00		
S. W. 8	32	36.00		
N. E. 9	33	36.00		
S. E. 9	34	36.00		
N. W. 9	35	36.00		
S. W. 9	36	36.00		
Total		1296.00		

29-9

29-9