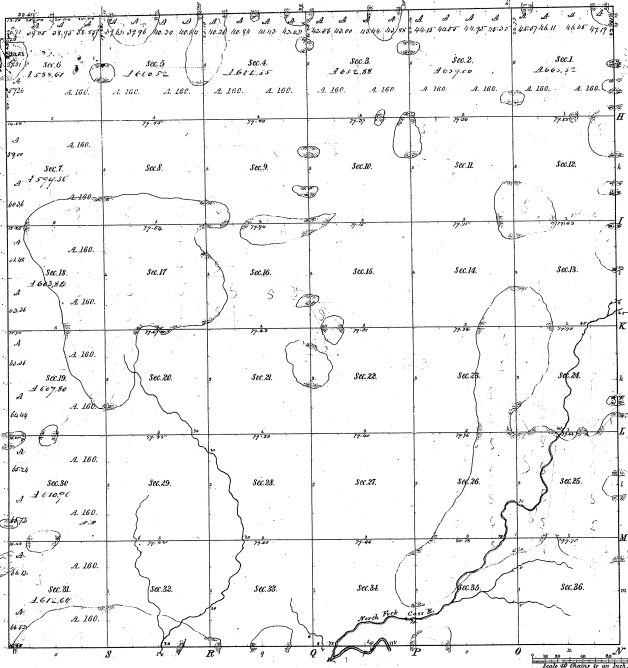


Township N^o 14 N Range N^o 11 E., Mer. Mich.

M 107

Abstracts of
Public Courses (1828) Public Cms

244-20



Total number of Acres 12,550.63

Survey designated	By whom surveyed	Date of Contract	Amount of Acres	When Surveyed
Township Lines	James H. ...	22 Dec 1820	24 22 36	17th 1825
Subdivisions	James H. ...	11 Aug 1820	57 62 24	27th 1825

The above Map of Township N14 N. of Range N11 E. of the Principal Meridian, all the same is truly and correctly laid out, and approved of the Surveyor General in Office, which has been examined and approved. Surveyor General's Office, Cincinnati.

Geo. S. ...

24-20

67