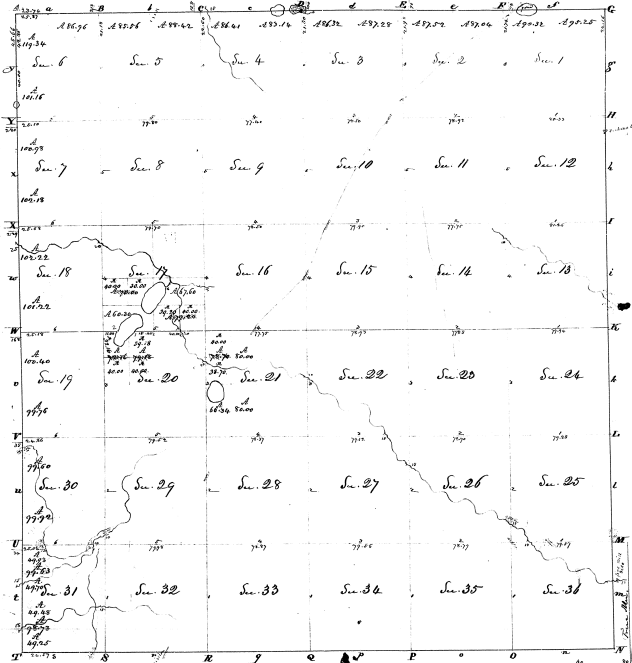


Township N. III south, Range XIII West Mer. (Mc. Lon.)



Surveyed in December 1899. by T. Brockfield S.D.

Acres		Acres	
Mc. Lon.	Mc. Lon.	Mc. Lon.	Mc. Lon.
SL 176 1	281.23	SL 179	320
SL -	80	SW -	1000.00
SL 177 -	20.22	SW -	177.78
SL -	40	SL 178 2	160
SL 178 2	320.00	SL 177 -	27.18
SL -	29.04	SL -	320
SL 179 -	37.74	SL 179 -	320
SL -	80	SL 179 -	30
SL 179 -	320	SL -	75.70
SL 179 3	57.28	SL 179 -	80
SL -	80	SL -	66.24
SL 179 -	28.32	SL -	23
SL -	80	SL -	24
SL 179 4	33.14	SL -	25
SL -	80	SL -	24
SL 179 -	31.61	SL -	27
SL -	80	SL -	28
SL -	320	SL -	29
SL 179 5	75.42	SL 30	320
SL -	80	SW -	27.60
SL 179 -	85.54	SW -	27.78
SL -	80	SL 21	320
SL -	320	SW -	27.63
SL 179 6	32.96	SW -	28.22
SL -	80	SW -	6.61
SW -	119.24	SW -	23
SL -	160	SW -	34
SW -	101.16	SW -	35
SL 7	320	SW -	36
SW -	100.98		
SW -	100.98		
SW -	6.00		
SW -	9		
SW -	10		
SW -	11		
SW -	12		
SW -	13		
SW -	14		
SW -	15		
SW -	16		
SW -	17		
SL 17	67.60		
SL -	77.20		
SL 179 -	20.00		
SL -	10.20		
SL 179 18	320		
SW -	102.22		
SW -	102.22		
SW -	123.42		

2-10