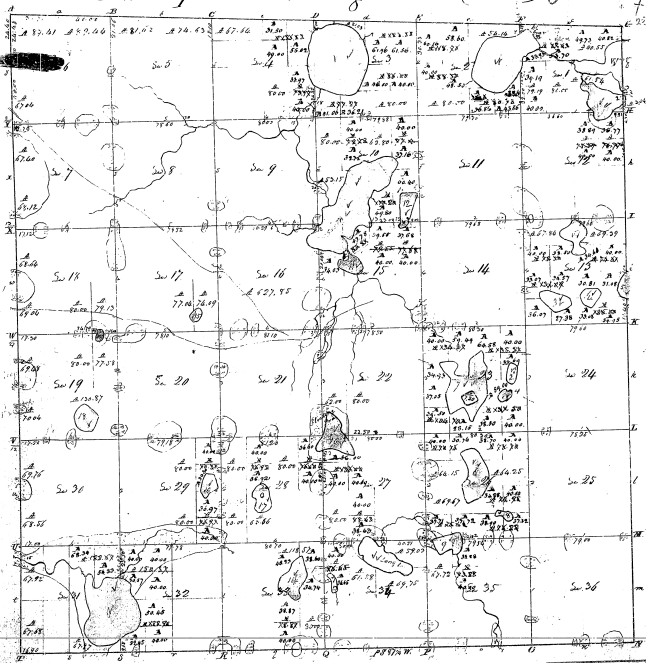


Township N. 1 south, Range N. 3 East (cont. Sec.) 13



Surveyed in October 1825 by Joseph Randle D. S.

Total 4304.250

Section	Area	Acres	Survey	Year
1	10	35	1825	19
2	10	35	1825	19
3	10	35	1825	19
4	10	35	1825	19
5	10	35	1825	19
6	10	35	1825	19
7	10	35	1825	19
8	10	35	1825	19
9	10	35	1825	19
10	10	35	1825	19
11	10	35	1825	19
12	10	35	1825	19
13	10	35	1825	19
14	10	35	1825	19
15	10	35	1825	19
16	10	35	1825	19
17	10	35	1825	19
18	10	35	1825	19
19	10	35	1825	19
20	10	35	1825	19
21	10	35	1825	19
22	10	35	1825	19
23	10	35	1825	19
24	10	35	1825	19
25	10	35	1825	19
26	10	35	1825	19
27	10	35	1825	19
28	10	35	1825	19
29	10	35	1825	19
30	10	35	1825	19
31	10	35	1825	19
32	10	35	1825	19
33	10	35	1825	19
34	10	35	1825	19
35	10	35	1825	19
36	10	35	1825	19