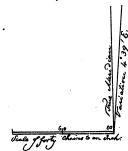


*Description of Survey of Claim
 N. 11 or 12th Concession of Claim 1839
 on Lake St. Clair Michigan
 1861 E. Town corner 399 on line of 1839.
 1839 to old post corner 399 8300.0
 1839 W. line corner 399 112.00 at 100 feet
 1839 from 1839 corner 399
 1839 S. 1/2 line between 399 8300 7/8 1839 survey post
 at post at intersection of line by 1839
 at post. cor. 399
 Surveyed in 1839 by John W. Hall & Co.
 - Claim of 399 should be set in said post.*

*I certify that the above diagram and description of survey
 of Claim N. 11 or 12th Concession to Claim N. 1839 conform
 to the records as a true copy from the original field
 notes and that one file in this office.
 Surveyor General's Office
 Detroit February 5, 1874*

*Seander Chapman
 Surveyor General.*



*See N. 11th Concession
 Map 1839*

32-27

32-27

A true Copy from the original on file in this Office.

*Surveyor General's Office
 February 20 - 1874*

*Seander Chapman
 Surveyor General.*

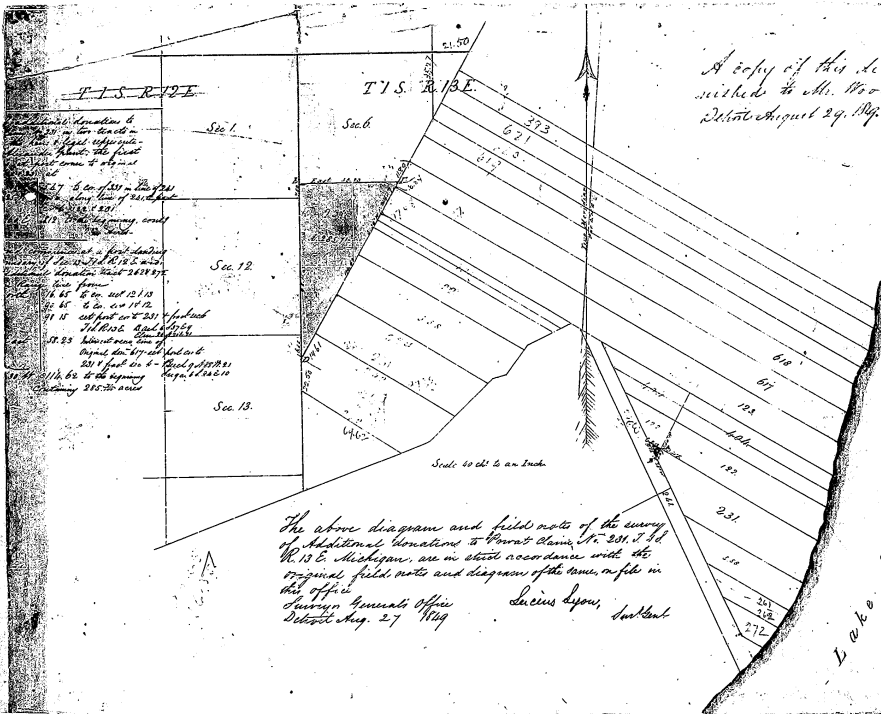
**DEPARTMENT OF THE INTERIOR
 GENERAL LAND OFFICE
 Washington, D. C.**
*I hereby certify that this is a true copy
 of the plat of official survey of the lands
 to which it relates, on file in this office.*

*Richard
 Recorder, General Land Office.*

Track J.

32-27

32-27-4



Section 1: Section 12: Section 13:
 Additional bearings & distances on the line of Section 12
 S 27° 45' 00" E 1201' 4" to post
 S 74° 10' 00" E 1201' 4" to post
 S 72° 20' 00" E 1201' 4" to post
 S 20° 4' 00" E 1201' 4" to post
 S 116° 52' 00" W to the beginning of the line 280' 00" across

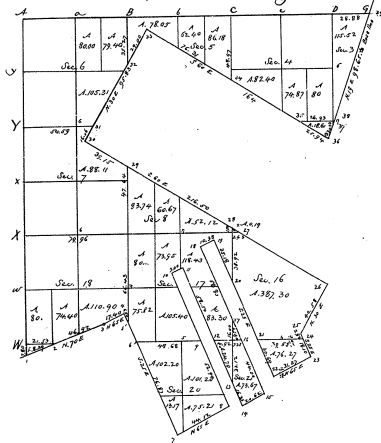
A copy of this diagram was furnished to Mr. Wood of Sandwick Co. Detroit August 29, 1894.

Full sheet

The above diagram and field notes of the survey of Additional donations to Forest Reserve No. 231, T 13 S. R. 13 E. Michigan, are in strict accordance with the original field notes and diagrams of the same, on file in this office.
 Surveyor General's Office
 Detroit Aug. 27 1894
 Lucius Lyon, Subst.

Lake St. Clair
 500

Township N. I. South, Range N. XIII East Mer. (Stick Per.)



32-27

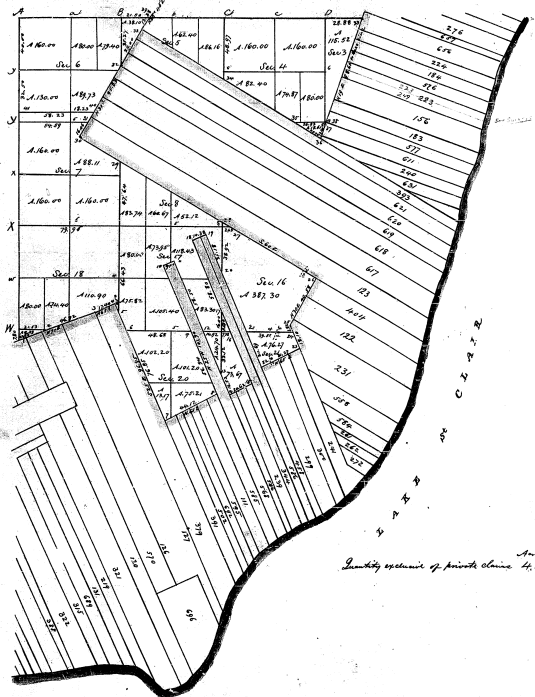
Edgar

I certify that the above is a true copy of the original plat in this office

DEPARTMENT OF THE INTERIOR
 GENERAL LAND OFFICE
 Washington, D. C., June 23, 1910.
 I hereby certify that this is a true copy
 of the plat of official surveys of the lands
 to which it relates, on file in this office, original party files.

J. B. [Signature]
 Recorder General Land Office

32-27



Area over
boundary of private claim 4, 165. 14

Township N. I. South Range N. XIII. East of 100th (2nd 1st Sec.) Surveyed by Joseph F. Weber 1897

DEPARTMENT OF THE INTERIOR,
 GENERAL LAND OFFICE,
 Washington, D. C., ~~1898~~ 23 1912
 I hereby certify that this is a true copy
 of the plat of official survey of the lands
 to which it relates, on file in this office.

Richard
 Recorder General Land Office

32-27