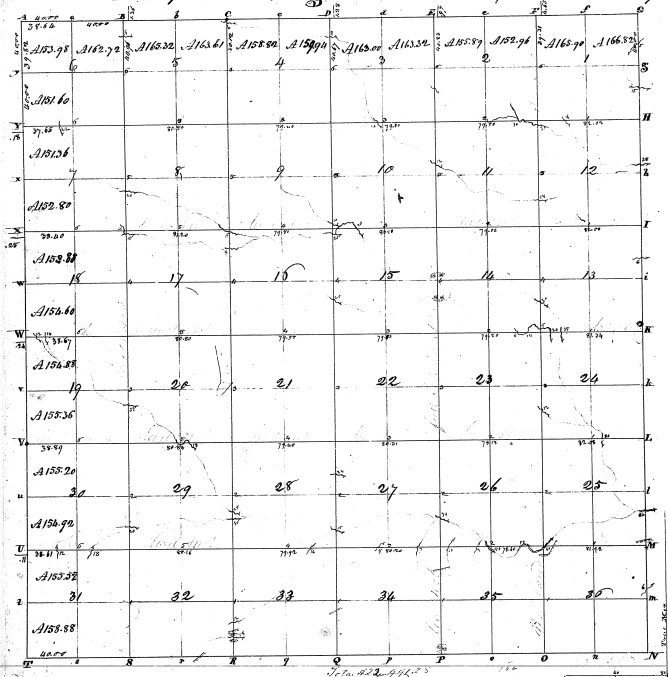


Township N. 1 south, Range N. VIII East of Mer. (Mich. Ter.)



Pursuant to a contract with and instructions from Edward D. Griffin, Surveyor General of the United States, bearing date the 10th of April 1859, I have administered land out and surveyed the above described Township. It is hereby certified that the line and bounds between the several townships are as represented on said plat and divisions in the field, and unless there be any other returns with the plat into the Surveyor General's Office.

Witness my hand and seal this 15 day of September 1859.

Edward D. Griffin