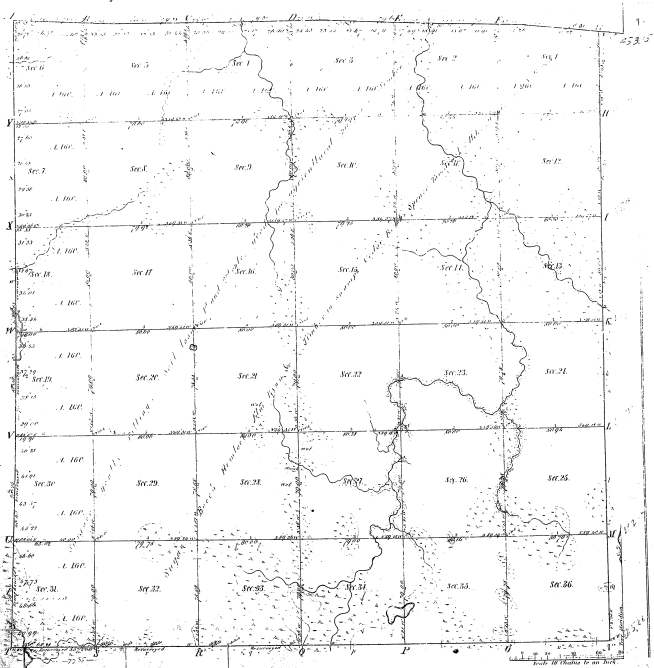


R. 30000

Township 17 3/4 N. Range 12 E. Mer. Mich.

Meridian
 Public Lands Office
 Department of the Interior



Total number of Acres 36,360.00

Survey designated	By Whom Surveyed	Date of Commencement	Amount of Acres	When Surveyed	When first sold or otherwise disposed of
Public Lands	Gov. St. Onuma	October 5 th 1868	36,360.00	1868	1868
Subdivisions	Gov. St. Onuma	Oct. 5 th 1868	36,360.00	1868	1868
Boundary Lines	Gov. St. Onuma	Oct. 5 th 1868	36,360.00	1868	1868

The above copy of Township 17 3/4 N. Range 12 E. East of the
 Principal Meridian Michigan
 is hereby approved to the field notes
 as the basis for the sale of the lands which have been surveyed and approved.

Surveyor General's Office
 Detroit, Michigan, 1868

S. C. H. [Signature]
 Sec'y

30-8

Small Print and
 Additional Notes