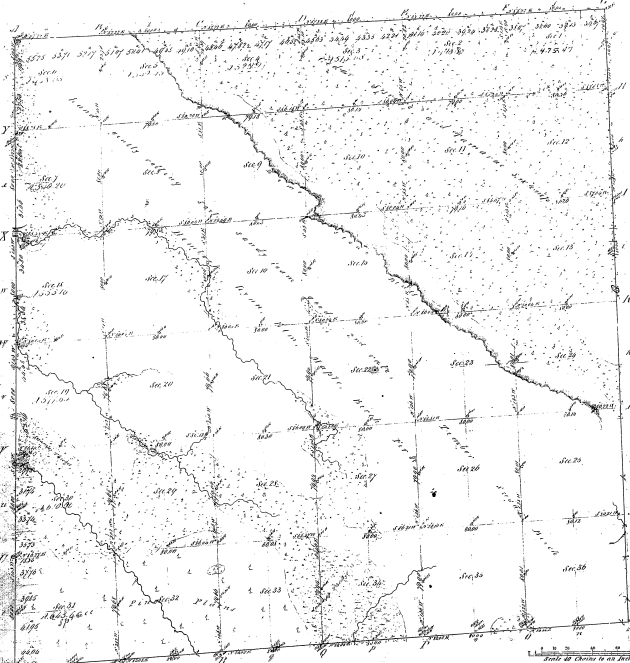


McCurry  
Township N<sup>o</sup> 33 N. Range N<sup>o</sup> 4 E. Mer. Mich.



Number of  
Township Section 31 32 33 34 35 36 37 38 39 40  
38


19-38

Total number of Acres 2155.04

Where Acquired	In How Occupied	Date of Convey	Amount of Survey	When Surveyed	When Closed in the County Clerk's Office
Gravelly Hill	John Redden	Sept 22 1888	4 00 00	7 <sup>th</sup> June 1888	
			2 50 00		
			58 57 57	2 <sup>nd</sup> June 1886	

The above map of Township N. 33 North of Range 4 E. East of the Principal Meridian of Michigan is fully conformable to the field notes of the survey filed on file in this Office, which have been examined and approved.

Sherwood County Office, Searcy, Oklahoma Territory

CONF. COPY