

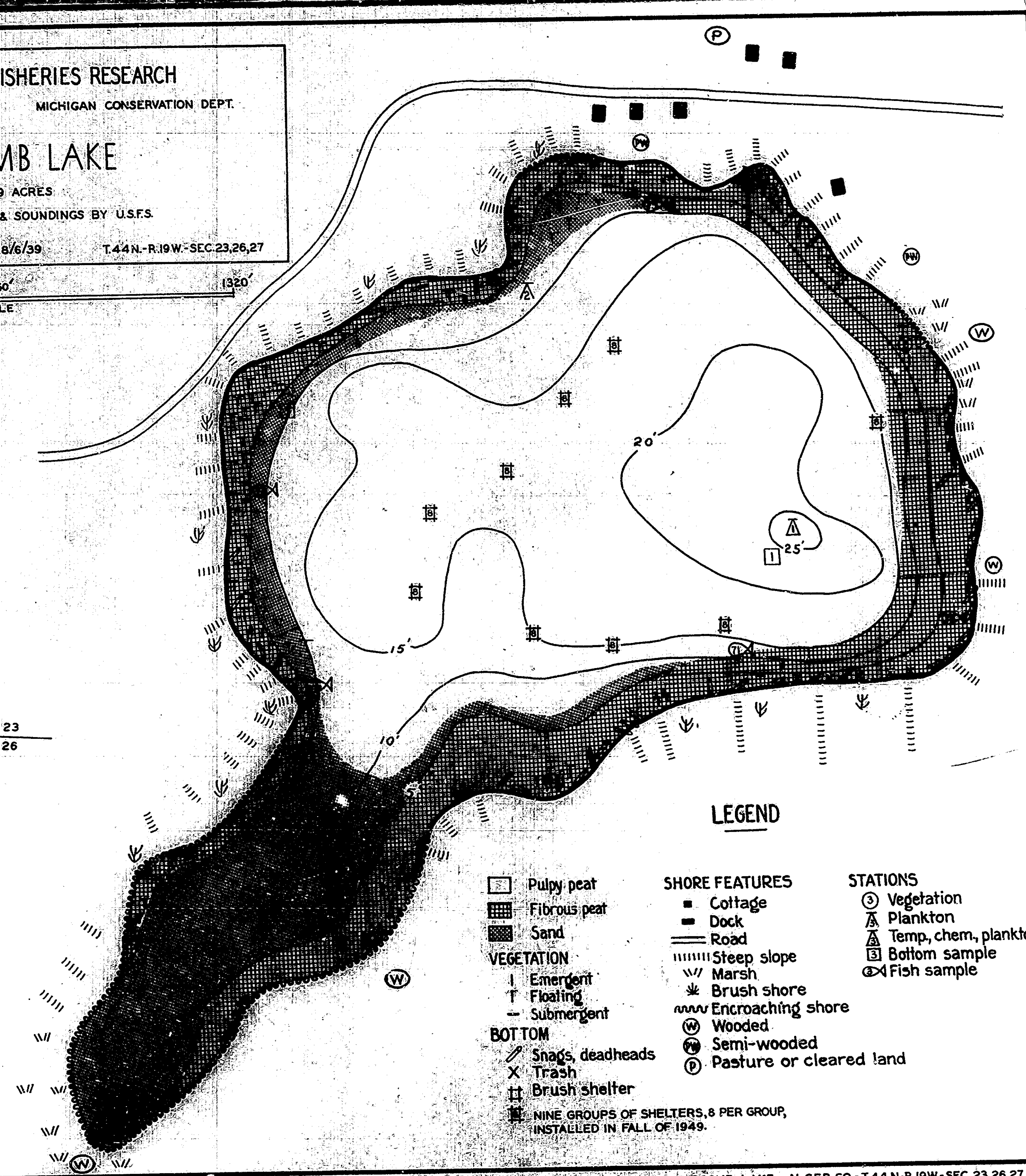
INSTITUTE FOR FISHERIES RESEARCH
 DIVISION OF FISHERIES MICHIGAN CONSERVATION DEPT.

M^cCOMB LAKE

AREA: 59 ACRES
 MARGINAL SURVEY & SOUNDINGS BY U.S.F.S.
 ALGER COUNTY 7/27-8/6/39 T.44N.-R.19W.-SEC.23,26,27



22 | 23
27 | 26



LEGEND

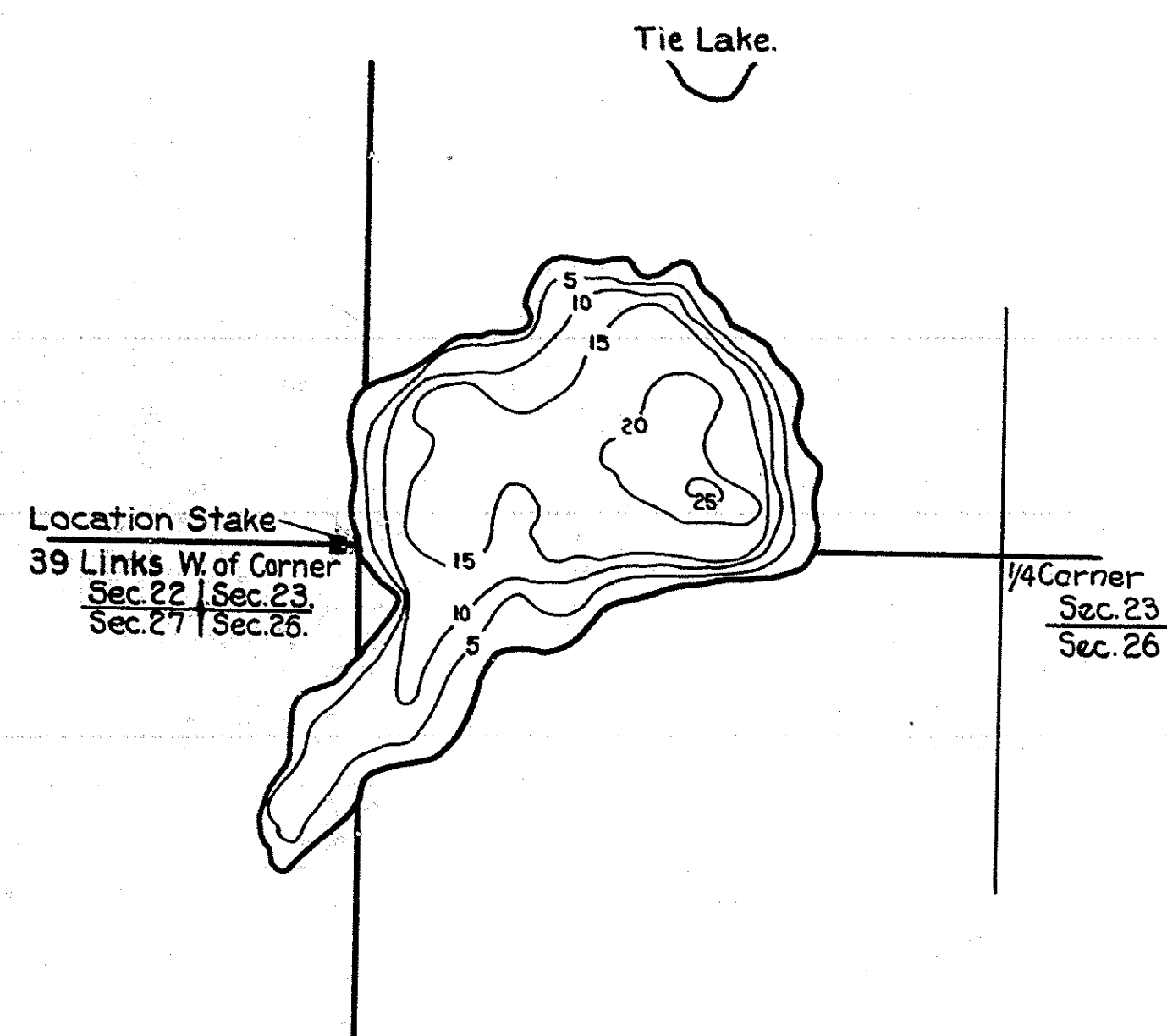
- | | | |
|--|--|--|
| <ul style="list-style-type: none"> Pulpy peat Fibrous peat Sand <p>VEGETATION</p> <ul style="list-style-type: none"> Emergent Floating Submergent <p>BOTTOM</p> <ul style="list-style-type: none"> Snags, deadheads Trash Brush shelter NINE GROUPS OF SHELTERS, 8 PER GROUP, INSTALLED IN FALL OF 1949. | <p>SHORE FEATURES</p> <ul style="list-style-type: none"> Cottage Dock Road Steep slope Marsh Brush shore Encroaching shore Wooded Semi-wooded Pasture or cleared land | <p>STATIONS</p> <ul style="list-style-type: none"> Vegetation Plankton Temp, chem, plankton Bottom sample Fish sample |
|--|--|--|

J-5-45

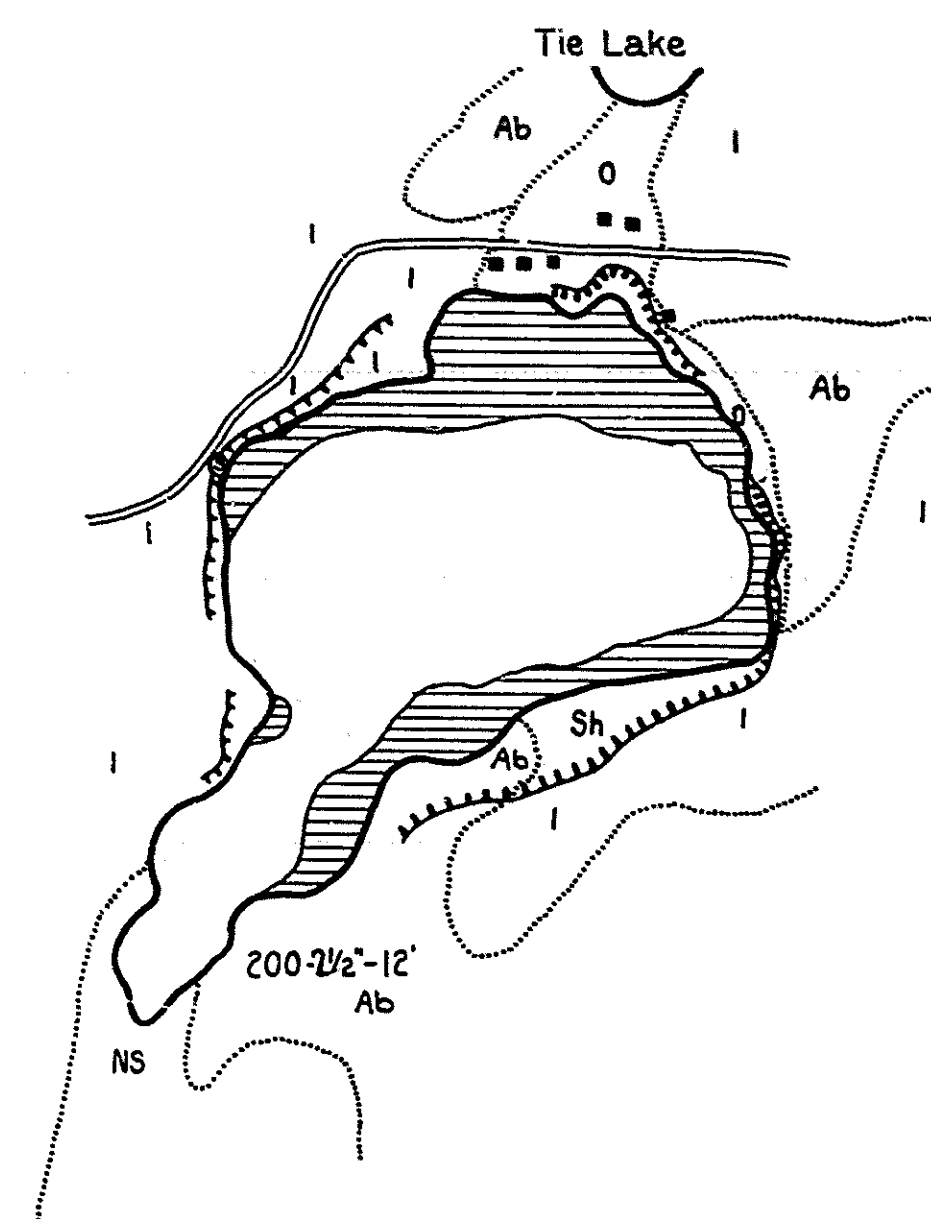
R-9
U.S. Department of Agriculture
Forest Service
LAKE AND STREAM SURVEY
Mc COMB LAKE
Hiawatha National Forest
Michigan

Location - T. 44 N. R. 19 W. Secs. 23-26-27
Scale - 8" = 1 Mile

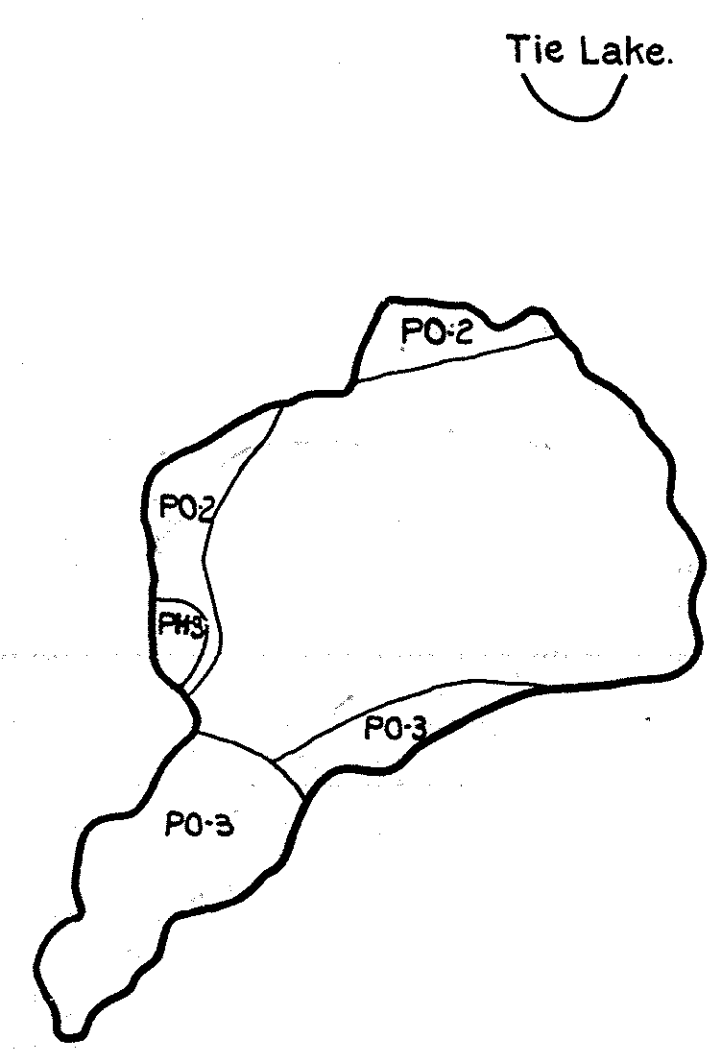
Area - 59 Acres.
Length of Shore Line - 1.5 Miles.



Contour Map
Contour Interval = 5'



Cover Type And
Lake Bottom Soil Type Map



Aquatic Vegetation Map.