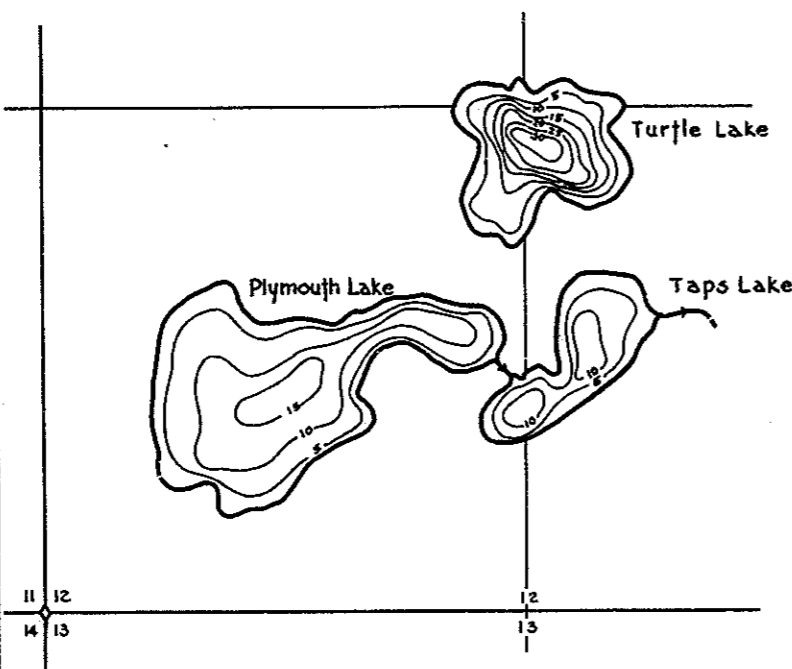


R-9
 U.S. Department of Agriculture
 Forest Service
 LAKE AND STREAM SURVEY
 MISHIKE LAKE - TAPS LAKE
 PLYMOUTH LAKE - LAKE HENRY
 Ottawa National Forest
 Michigan

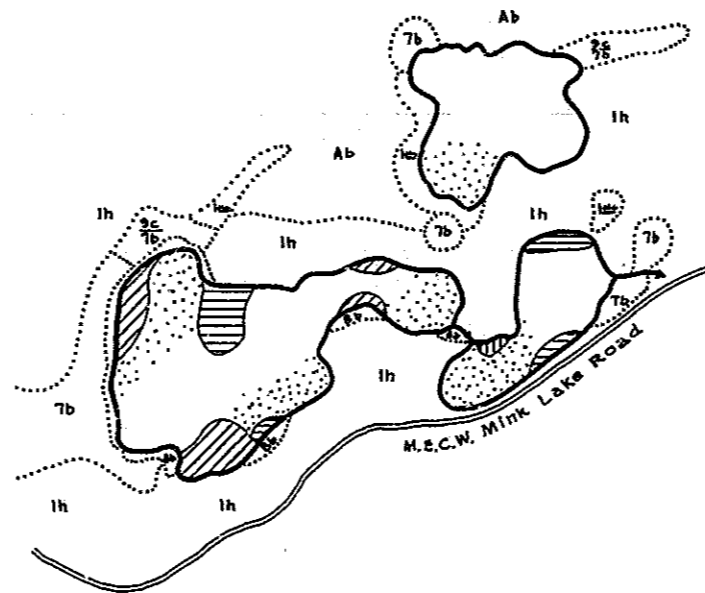
Mishike Lake Area 13.0 Acres
 Taps Lake Area 9.2 Acres
 Plymouth Lake Area 27.5 Acres
 Lake Henry Area 43.4 Acres
 Mishike Lake Length of Shoreline .55 Miles
 Taps Lake Length of Shoreline .60 Miles
 Plymouth Lake Length of Shoreline 1.10 Miles
 Lake Henry Length of Shoreline 1.53 Miles

Scale : 8 Inches = 1 Mile

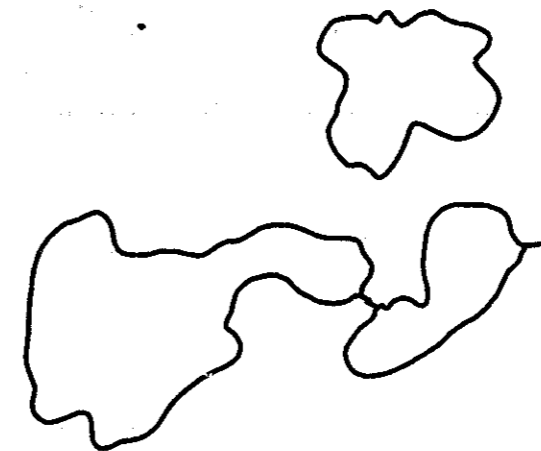
Mishike Lake - Taps Lake - Plymouth Lake
 Location: Sec. 12, T.45N. R.44W.



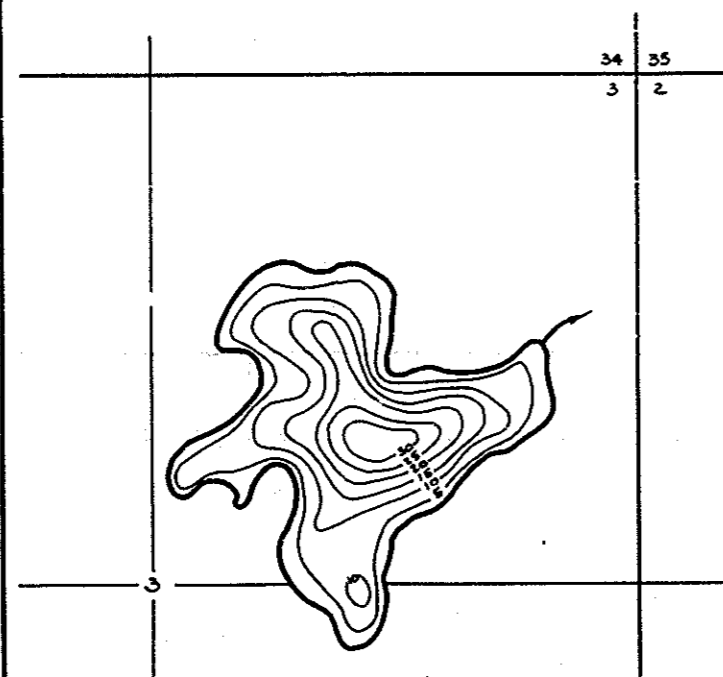
Contour Map
Contour Interval = 5'



Cover Type And
Lake Bottom Soil Type Map

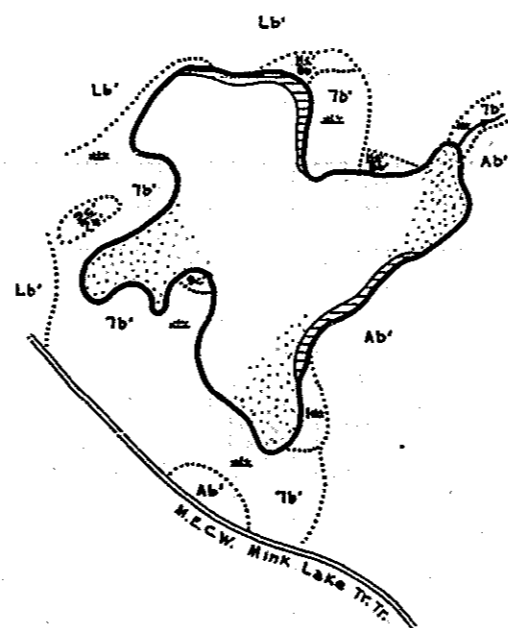


Aquatic Vegetation Map



Contour Map
Contour Interval = 5'

Lake Henry
 Location: Sec. 3, T.45N. R.44W.



Cover Type And
Lake Bottom Soil Type Map



Aquatic Vegetation Map