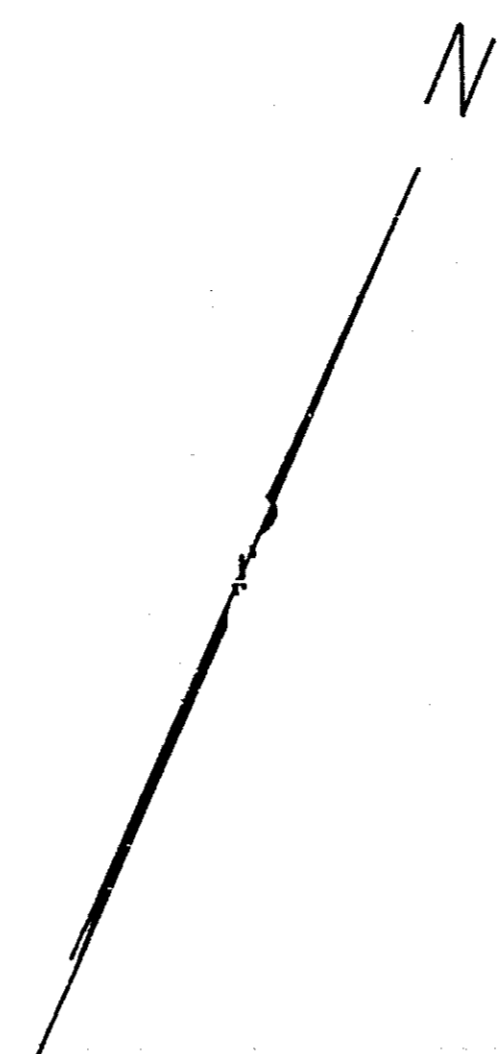


INSTITUTE FOR FISHERIES RESEARCH
 DIVISION OF FISHERIES MICHIGAN CONSERVATION DEPT.
 LAKE INVENTORY MAP
TAMARACK LAKE
 AREA 335 ACRES
 MARGINAL SURVEY AND SOUNDINGS 12/30,31/46 & 1/2-8/47
 GOGEBIC & IRON CO'S. T. 44-45 N., R. 37-38 W., SEC'S. 1,6,12,31,36



LEGEND

BOTTOM

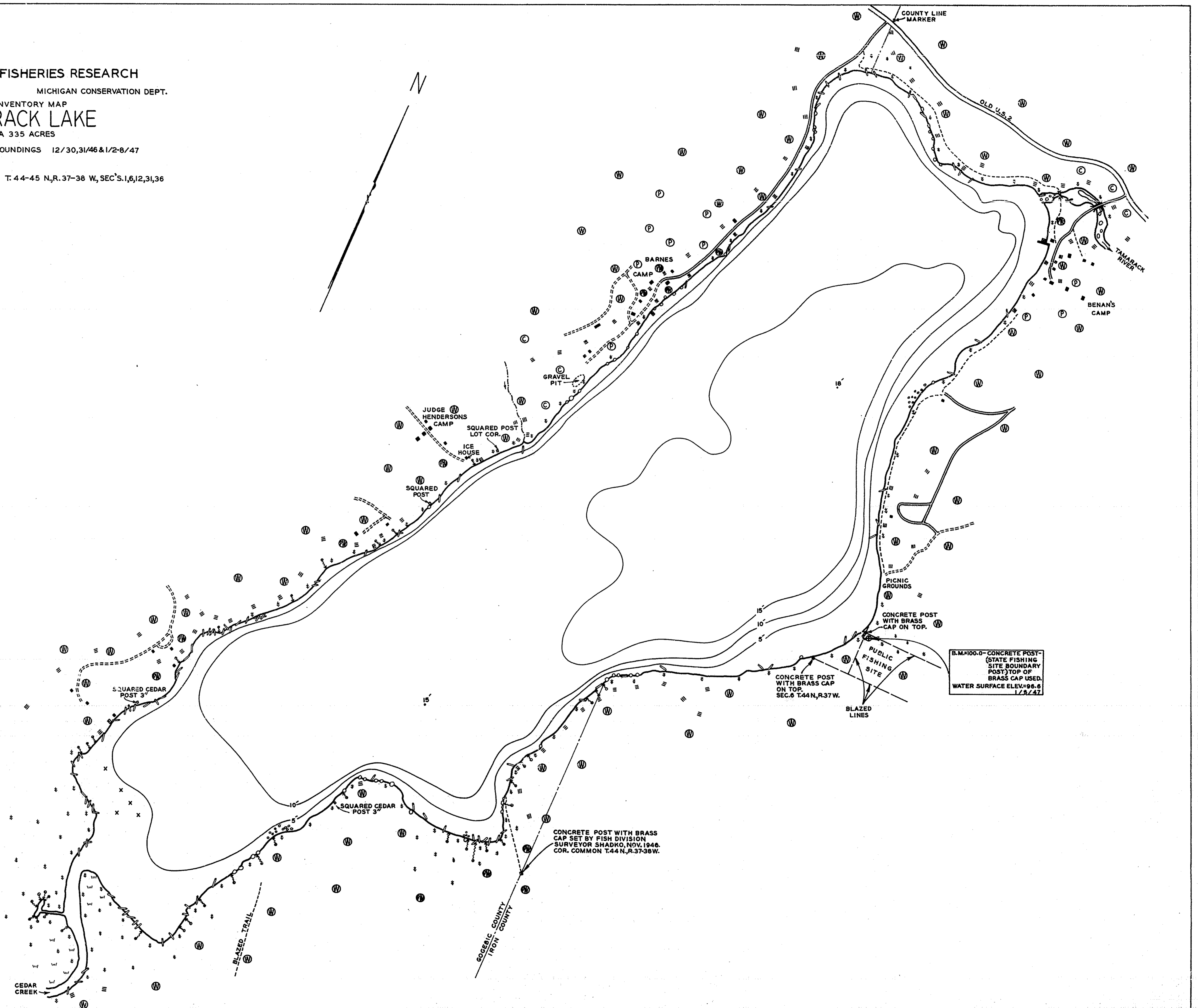
- Sand
- ▤ Sand and Marl
- ▥ Pulpy peat
- ▧ Fibrous peat
- x Detritus or trash
- Deadheads

OUTLINE & CONTOURS

- Shoreline
- - - Contours

SHORE FEATURES

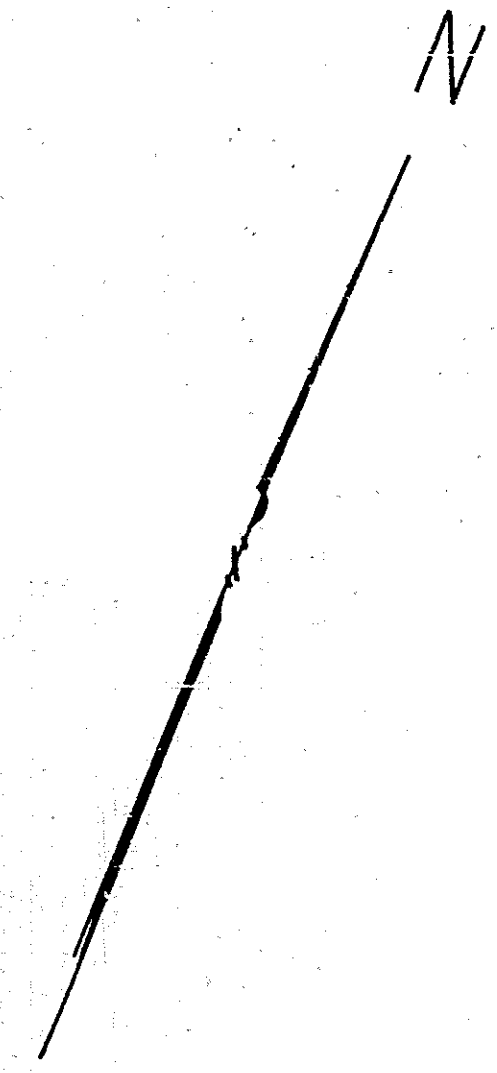
- Cottage
- ┌ Dock
- ▭ Slope
- Spring
- ▬ Improved road
- - - Unimproved road
- - - Trail
- ▭ Marsh
- ▭ Brush
- ▭ Boathouse
- ▭ Bridge
- ▭ Wooded
- ▭ Partly wooded
- ▭ Pasture
- ▭ Cultivated
- ┌ Intermittent inlet
- ┌ Inlet
- ┌ Outlet
- Boulders



B.M. 100.0 - CONCRETE POST (STATE FISHING SITE BOUNDARY POST) TOP OF BRASS CAP USED. WATER SURFACE ELEV. 96.6 1/8/47

CONCRETE POST WITH BRASS CAP SET BY FISH DIVISION SURVEYOR SHADKO, NOV. 1948. COR. COMMON T.44 N., R.37 W.

INSTITUTE FOR FISHERIES RESEARCH
 DIVISION OF FISHERIES MICHIGAN CONSERVATION DEPT.
 LAKE INVENTORY MAP
TAMARACK LAKE
 AREA 335 ACRES
 MARGINAL SURVEY AND SOUNDINGS 12/30,31/46 & 1/2-8/47
 GOGEBIC & IRON CO'S. T. 44-45 N., R. 37-38 W., SEC'S. 1, 6, 12, 31, 36



LEGEND

BOTTOM

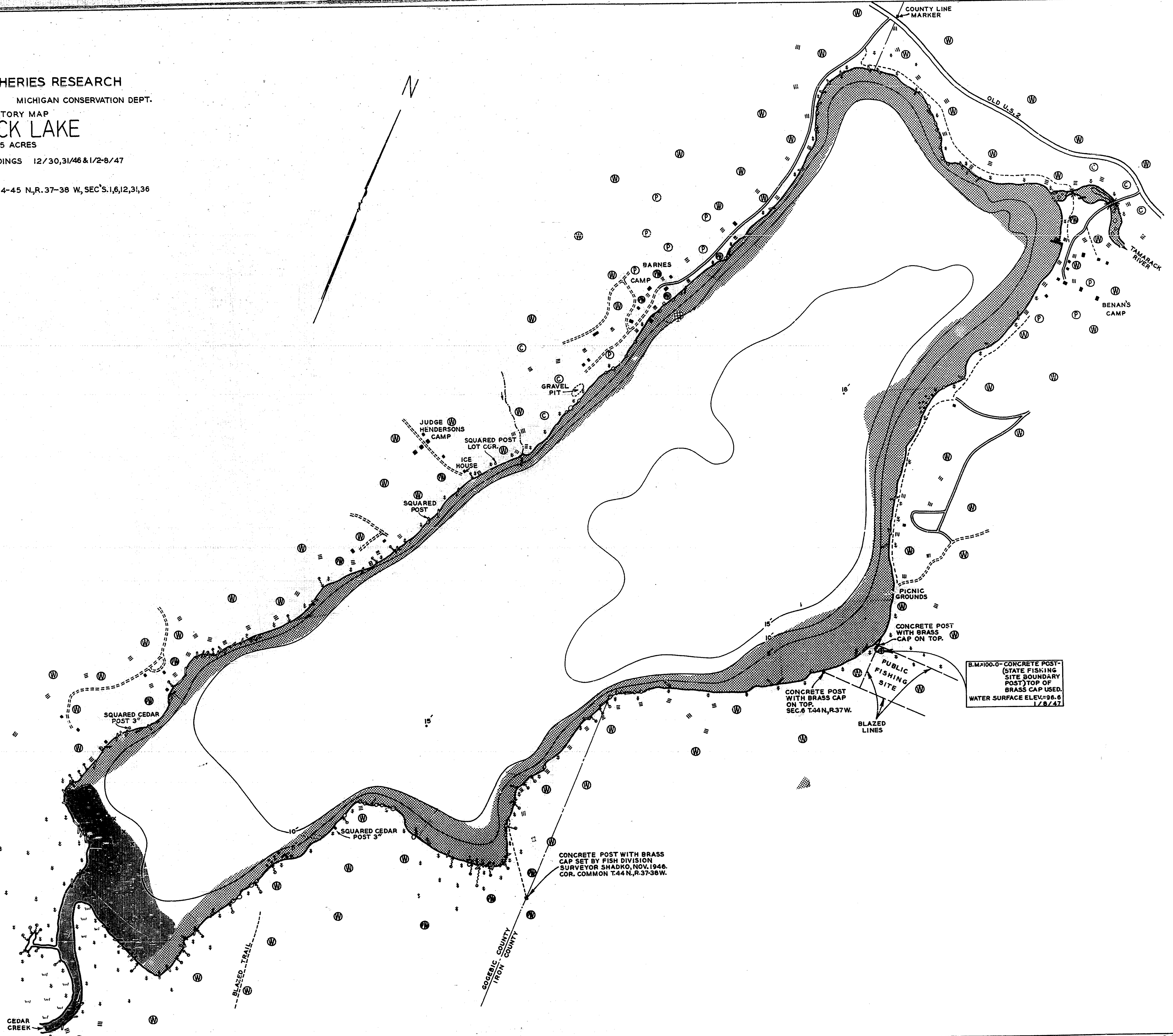
- Sand
- Sand and Marl
- Pulpy peat
- Fibrous peat
- Detritus or trash
- Deadheads

OUTLINE & CONTOURS

- Shoreline
- Contours

SHORE FEATURES

- Cottage
- Dock
- Slope
- Spring
- Improved road
- Unimproved road
- Trail
- Marsh
- Brush
- Boathouse
- Bridge
- Wooded
- Partly wooded
- Pasture
- Cultivated
- Intermittent inlet
- Inlet
- Outlet
- Boulders



B.M. 100.0 - CONCRETE POST -
 (STATE FISHING SITE BOUNDARY
 POST) TOP OF
 BRASS CAP USED.
 WATER SURFACE ELEV. 98.6
 1/8/47.

CONCRETE POST WITH BRASS
 CAP SET BY FISH DIVISION
 SURVEYOR SHADKO, NOV. 1946.
 COR. COMMON T. 44 N., R. 37 W.