

INSTITUTE FOR FISHERIES RESEARCH
 DIVISION OF FISHERIES MICHIGAN CONSERVATION DEPT.
 LAKE INVENTORY MAP
CUB LAKE
 AREA 69 ACRES
 MARGINAL SURVEY AND SOUNDINGS 2/16/44
 HILLSDALE COUNTY T. 7-8 S., R. 3 W., SEC. 3, 34

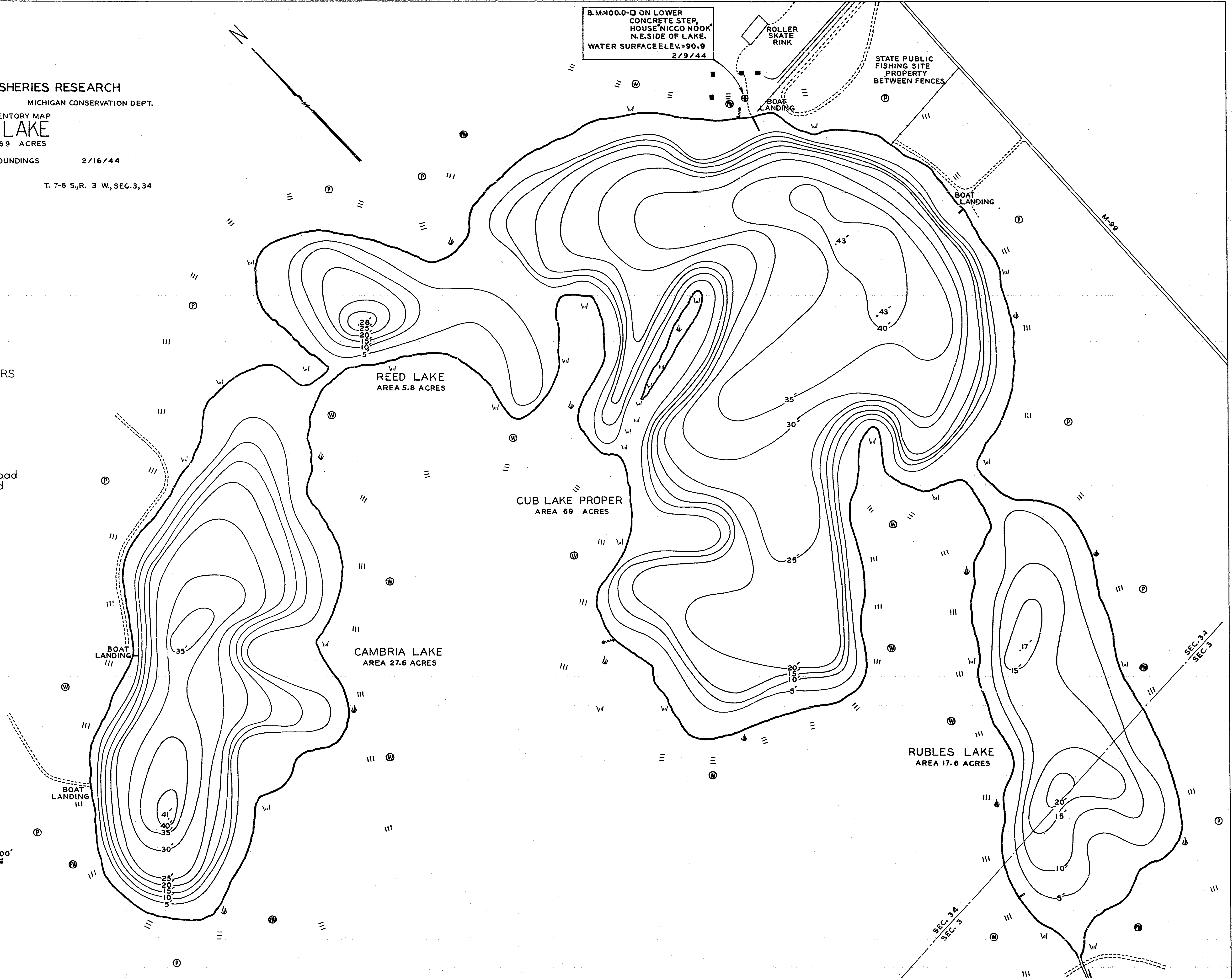
B.M. 100.0-D ON LOWER
 CONCRETE STEP,
 HOUSE 'NICCO NOOK'
 N.E. SIDE OF LAKE.
 WATER SURFACE ELEV. = 90.9
 2/9/44

ROLLER
 SKATE
 RINK

STATE PUBLIC
 FISHING SITE
 PROPERTY
 BETWEEN FENCES

LEGEND

- BOTTOM**
- Sand
 - Marl
 - Pulpy peat
 - Fibrous peat
 - Muck
- OUTLINE & CONTOURS**
- Shoreline
 - Contours
- SHORE FEATURES**
- Cottage
 - ┌ Dock
 - ≡ Slope
 - ⊕ Spring
 - Fence
 - - - Unimproved road
 - == Improved road
 - - - Trail
 - W Marsh
 - ⊕ Brush
 - ⊕ Wooded
 - ⊕ Partly wooded
 - ⊕ Pasture
 - || Outlet



W.L.C.

INSTITUTE FOR FISHERIES RESEARCH
 DIVISION OF FISHERIES MICHIGAN CONSERVATION DEPT.
 LAKE INVENTORY MAP
CUB LAKE
 AREA 69 ACRES
 MARGINAL SURVEY AND SOUNDINGS 2/16/44
 HILLSDALE COUNTY T. 7-8 S., R. 3 W., SEC. 3, 34

B.M. 100.0 - □ ON LOWER
 CONCRETE STEP
 HOUSE "NICCO NOOK"
 N.E. SIDE OF LAKE.
 WATER SURFACE ELEV. = 90.9
 2/9/44

LEGEND

- BOTTOM**
- ▨ Sand
 - ▩ Marl
 - Pulpy peat
 - Fibrous peat
 - ▧ Muck
- OUTLINE & CONTOURS**
- Shoreline
 - - - Contours
- SHORE FEATURES**
- Cottage
 - ├ Dock
 - ||| Slope
 - ⊕ Spring
 - Fence
 - - - Unimproved road
 - == Improved road
 - Trail
 - W Marsh
 - ⊕ Brush
 - ⊕ Wooded
 - ⊕ Partly wooded
 - ⊕ Pasture
 - ⊕ Outlet

