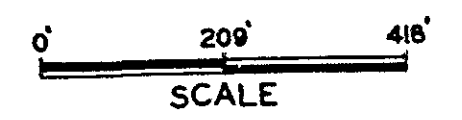


INSTITUTE FOR FISHERIES RESEARCH  
 DIVISION OF FISHERIES MICHIGAN CONSERVATION DEPT.  
 LAKE INVENTORY MAP  
**MARTEN LAKE**  
 AREA 176 ACRES  
 MARGINAL SURVEY & SOUNDINGS USFS. 1937.  
 INVENTORY 8/21-23/1941.  
 IRON COUNTY T. 46 N, R. 35 W, SECS. 8,9,16.

- LEGEND**
- BOTTOM**  
 Sand  
 Pulpy peat  
 Gravel  
 Deadheads or snags
- OUTLINE & CONTOURS**  
 Shoreline  
 Contours
- VEGETATION**  
 Floating  
 Submergent  
 Emergent
- STATIONS** Vegetation  
 Temp., chem. & plankton  
 Fish sample  
 Bottom sample
- SHORE FEATURES**  
 Land survey lines  
 Marsh  
 Wooded  
 Outlet  
 Point of beginning

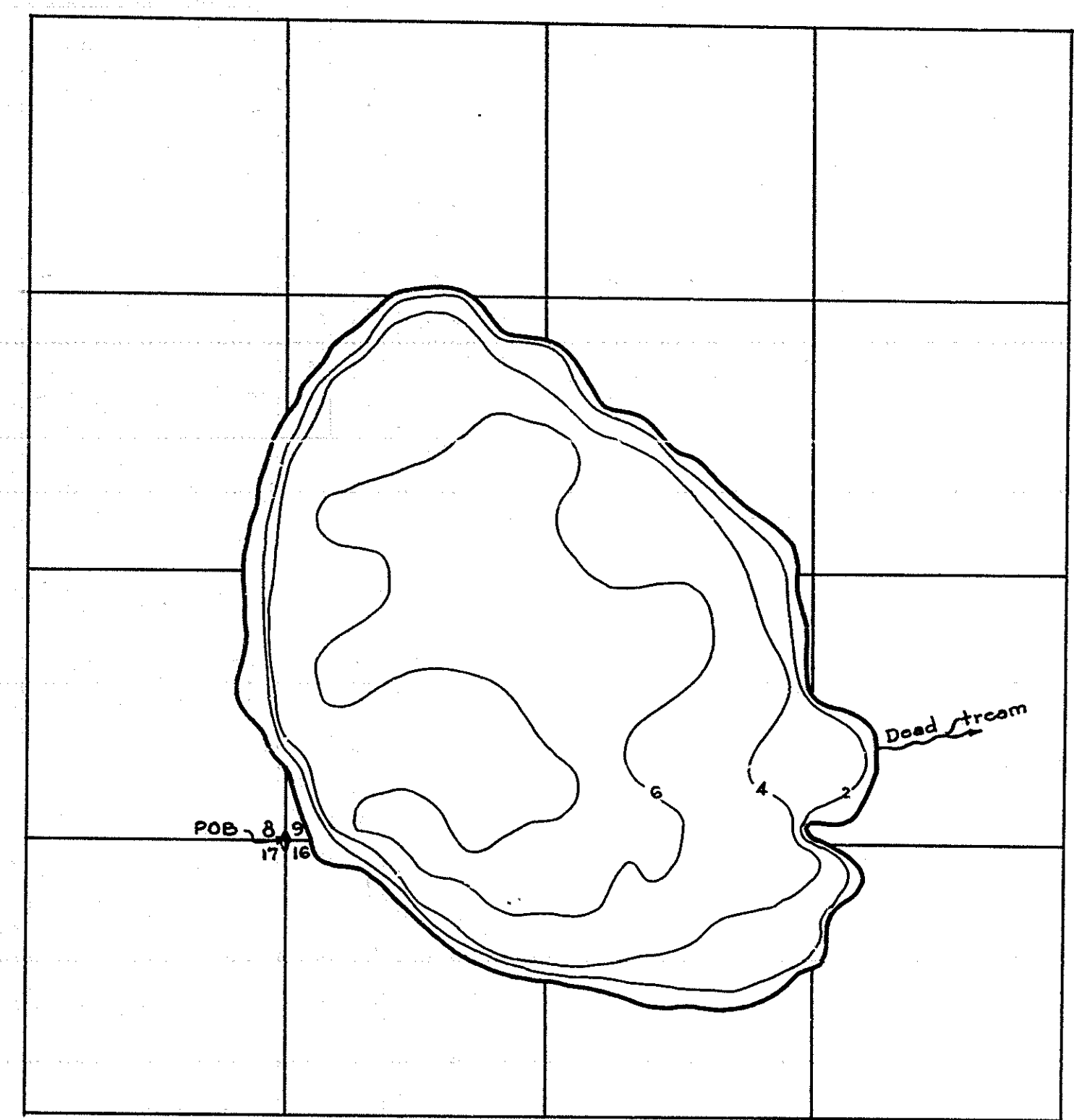


J-11-28

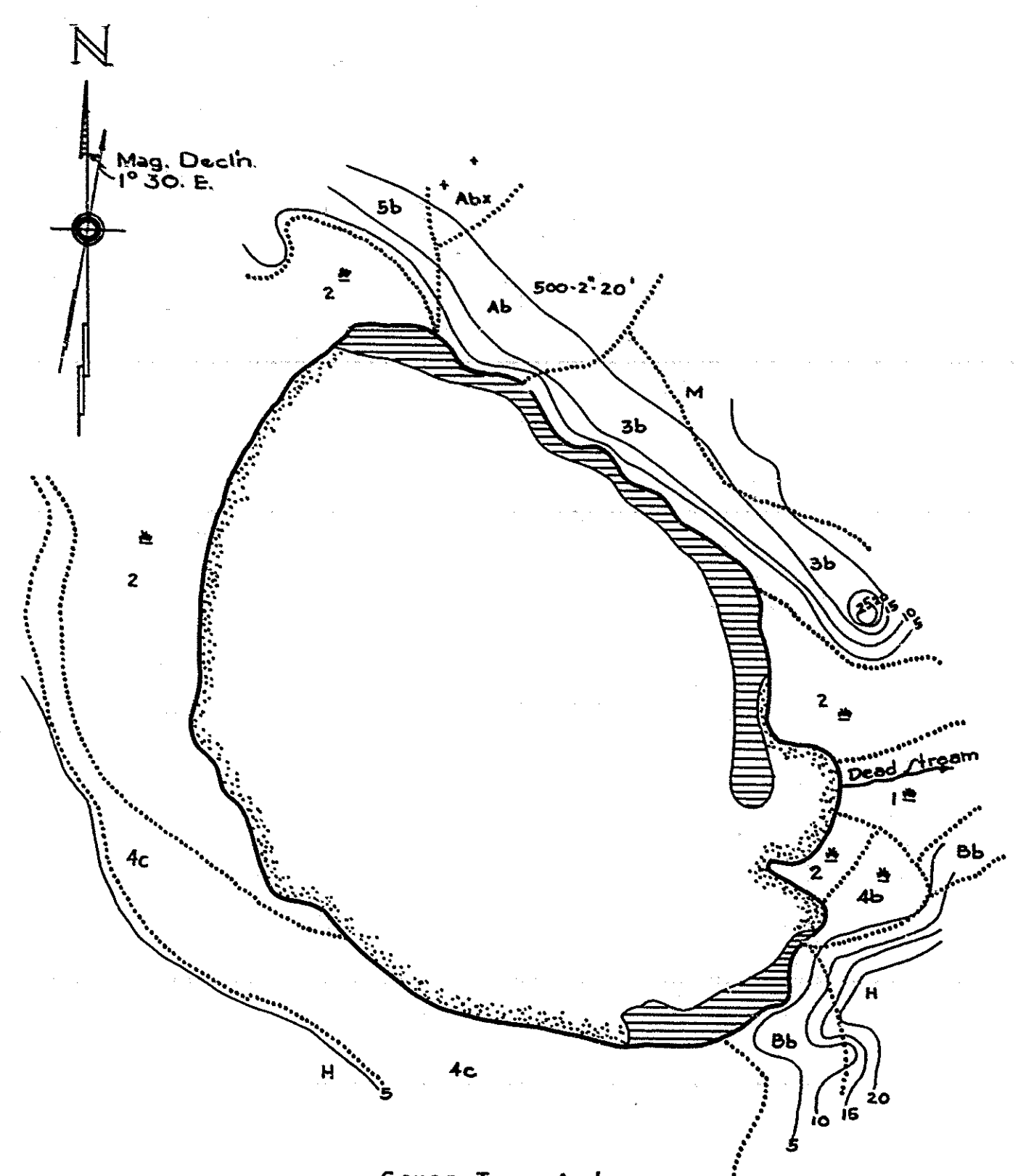
R-9  
U.S. Department of Agriculture  
Forest Service  
LAKE AND STREAM SURVEY  
MARTEN LAKE  
Ottawa National Forest  
Michigan

Location: T.46N. R.35W. Sec. 8-9-16  
Scale: 8" = 1 Mile

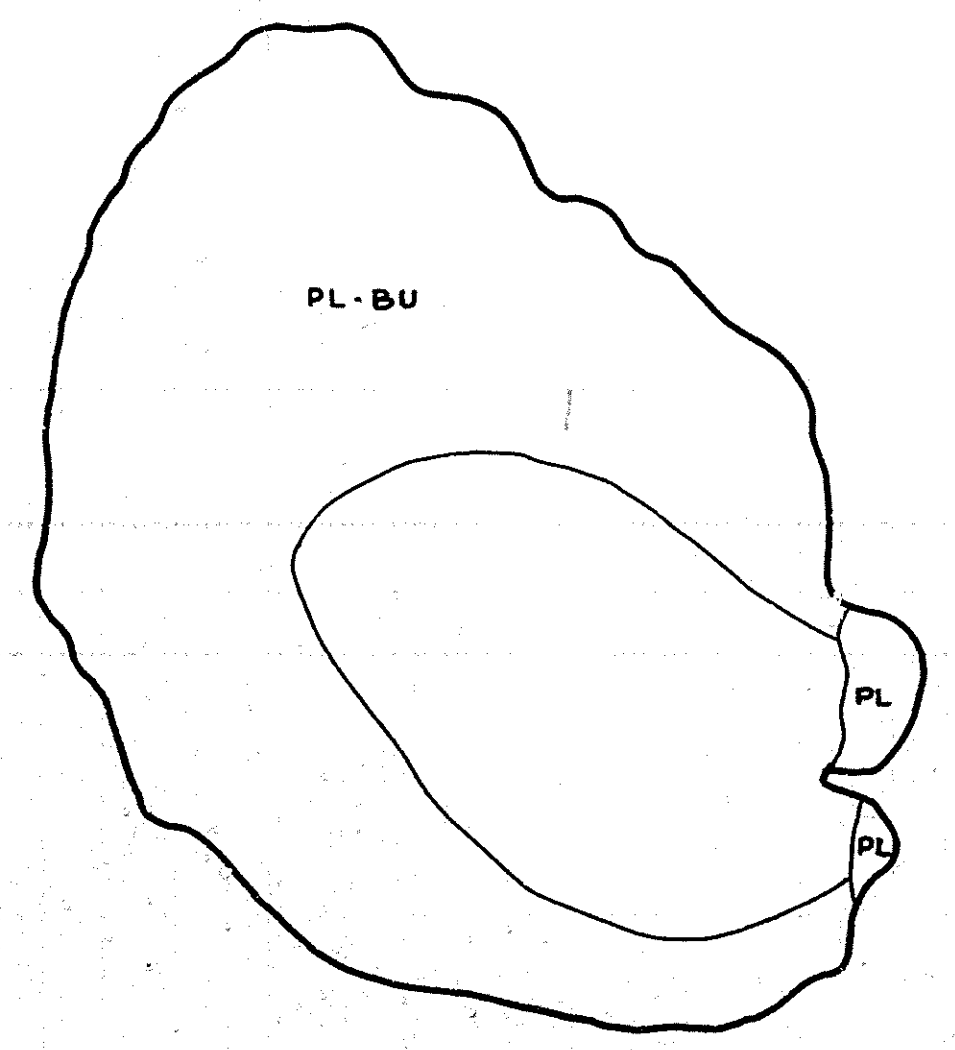
Area: 176 Acres  
Length of Shoreline: 2.2 Mile



Contour Map  
Contour Interval 2'



Cover Type and  
Lake Bottom Soil Type Map



Aquatic Vegetation Map