



# PORTAGE MARSH STATE WILDLIFE MANAGEMENT AREA

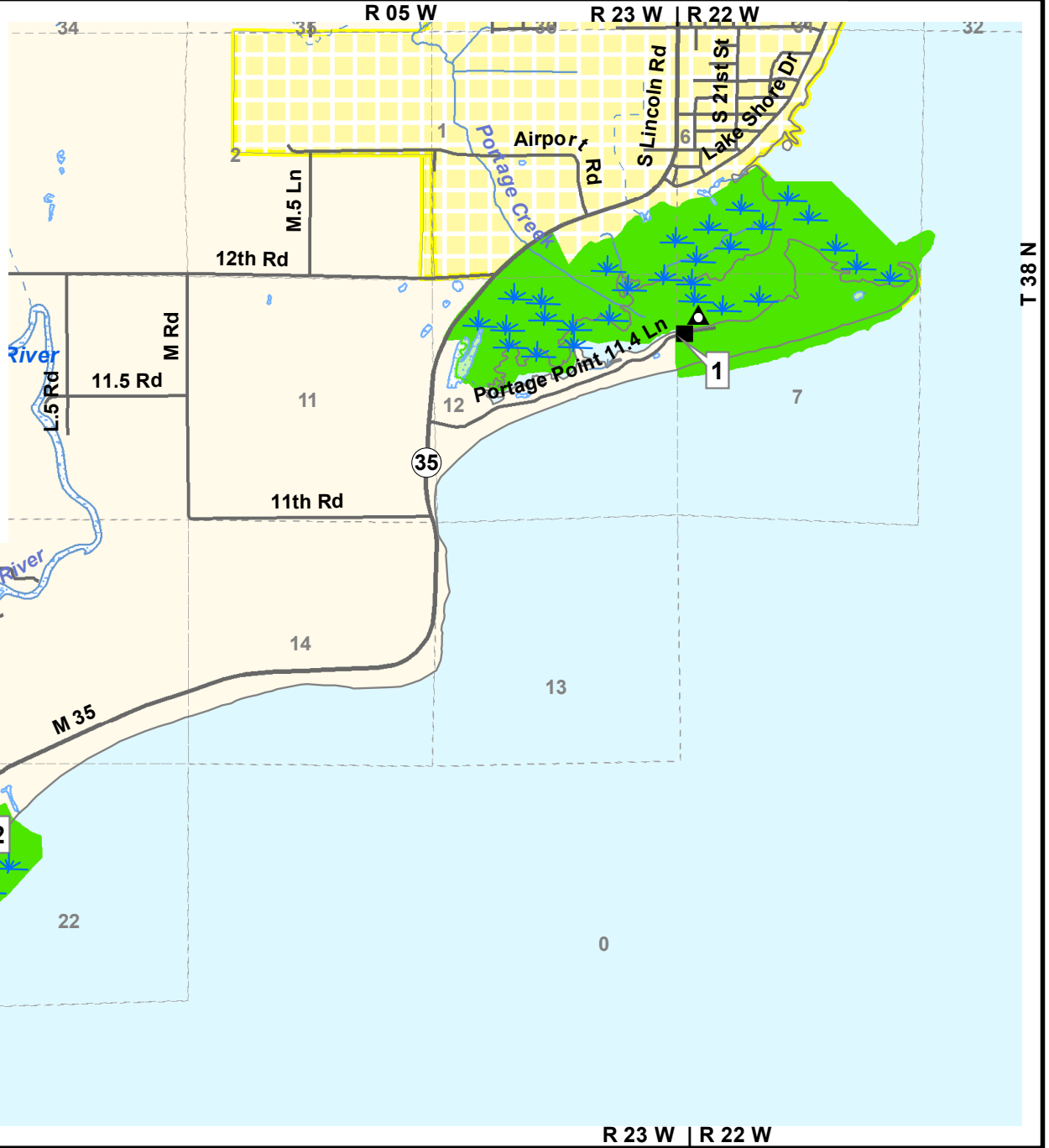
- General Map -  
Delta County

Area headquarters: Escanaba DNR Wildlife Office  
6833 Highway US-2/US-41/M-35, Gladstone, MI 49837 ; phone 906- 786-2351

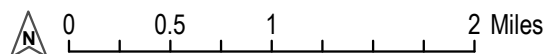


For more information on this or other areas, contact DNR offices, visit the DNR online at [www.michigan.gov/dnr](http://www.michigan.gov/dnr) or scan this QR-block.

**Mi-HUNT**  
Try Mi-HUNT, the DNR's online interactive mapping tool that helps you plan your hunting, trapping, or outdoor recreation adventures! [www.michigan.gov/mihunt](http://www.michigan.gov/mihunt)



- Legend:**
- State Land: ■ Wildlife/Game Area
  - Parking: ■ Prepared Lots
  - Boating: ▲ Prepared Ramp
  - Roads:  Highways or Paved
  - Water: ~ Lakes, Ponds
  - Political:  Town-Range-Section Lines (labelled 1-36, near center of block)
  - ▲ Rustic or Drop-in
  - ~ Gravel or Dirt Roads, Two-Tracks, Trails
  - ~ Rivers, Streams
  - ~ Marsh in Area
  - ~ Seas, Streams, Drains



**Important!** 150 yards or 450 feet Safety Zones (No Shooting!) are enforced around all buildings and structures at all times. Be Safe! Always be careful around water and ditch/dikes for deep water!

**Look for Watchable Wildlife viewing area signs in this area, for locations and more information about trails or features.**

GPS coordinates at flagged points (white box near point):

- [ 1 ] north end parking lot Lat. 45° 42' 23.7" N, Long. 87° 04' 46.3" W.
- [ 2 ] south end with boat ramp Lat. 45° 40' 36.2" N, Long. 87° 08' 27.8" W.



**Hunter Monies Help  
Make This Area  
Possible**

