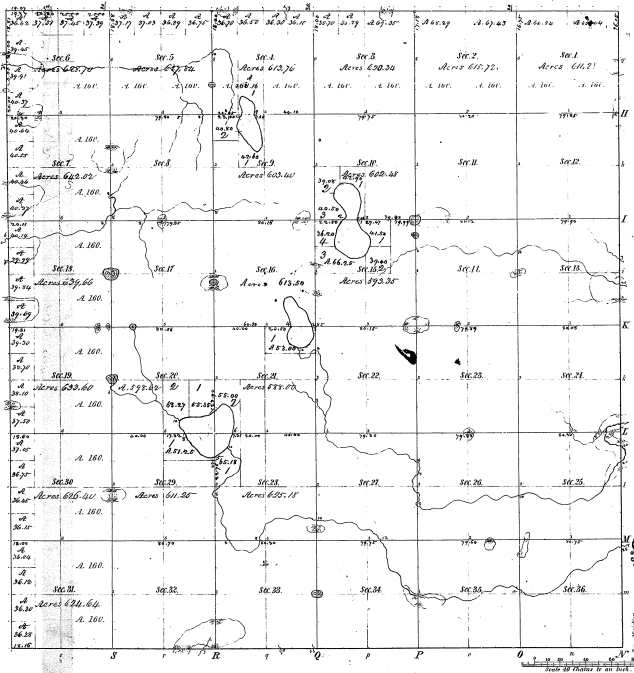


Resurvey
Township 1° 25' N Range 1° 6' East Mer.



Boundaries of	
Plate Contents 15-18	Plate Contents 18-21
22	23

22-23

Total number of Acres 22,522.24

Survey prosecuted by whom surveyed	Date of Contract	Amount of Survey	When Surveyed	Area of the land as shown on the "Plan" and "Map"
Township lines	James C. Cassin July 10, 1837	36	72	22,522.24
Subdivisions	John A. Dalton &c. 19, 1846	36	72	1,146

The above Map of Township 1° 25' N. of Range 1° 6' East of the Principal Meridian, Ohio, is hereby confirmed to the field notes of the survey thereof on file in this Office, which have been examined and approved.

Surveyor General's Office,
 Cincinnati, Feb. 12, 1846.

Wm. Johnston
 Sur. Gen.