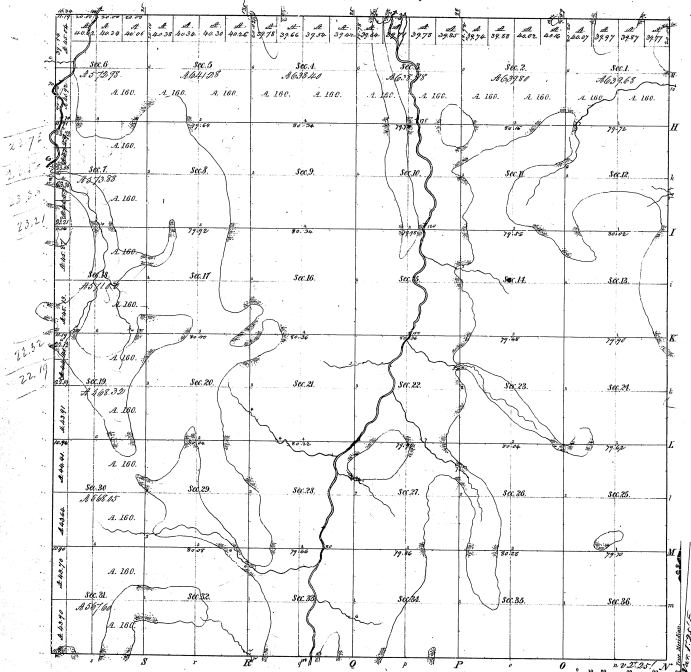


Township 1° 29' N. Range N° 7 East Mer. Mich.



Minutes of  
 Post Course 1841 Post Course 1842 Post Course 1843

22-6

32-6

Total number of Acres 20,678.97

Survey designated	By Whom Surveyed	Date of Contract	Amount of Survey	When Surveyed	Range of the land and also the Sec. Cont. in Acres
Township base	Samuel Adams	Dec. 17, 1837	25.25.44	3 <sup>rd</sup> of 1837	5 <sup>th</sup> of 1840
Subdivisions	James	28	57.26.52	3 <sup>rd</sup> of 1837	

The above map of Township 1° 29' N. of Range N° 7 E. of the Principal Meridian of Michigan is a duly authenticated copy of the survey thereof on file in this Office, which have been examined and approved.

Surveyor General's Office  
 Detroit, Mich. 5<sup>th</sup> of 1840

C. Craves, Surveyor Gen.