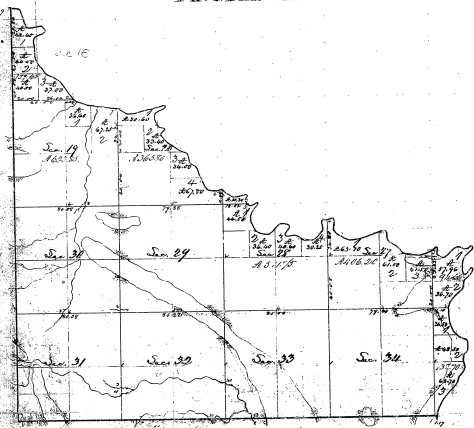


Township N^o 29N. Range N^o 9 East

Mer. Mich.

THUNDER BAY.



Township	Range	Section	Area		Total
			Acres	Sq. Rods	
29	9	1	360.0	12960.0	360.0
29	9	2	360.0	12960.0	360.0
29	9	3	360.0	12960.0	360.0
29	9	4	360.0	12960.0	360.0
29	9	5	360.0	12960.0	360.0
29	9	6	360.0	12960.0	360.0
29	9	7	360.0	12960.0	360.0
29	9	8	360.0	12960.0	360.0
29	9	9	360.0	12960.0	360.0
29	9	10	360.0	12960.0	360.0
29	9	11	360.0	12960.0	360.0
29	9	12	360.0	12960.0	360.0
29	9	13	360.0	12960.0	360.0
29	9	14	360.0	12960.0	360.0
29	9	15	360.0	12960.0	360.0
29	9	16	360.0	12960.0	360.0
29	9	17	360.0	12960.0	360.0
29	9	18	360.0	12960.0	360.0
29	9	19	360.0	12960.0	360.0
29	9	20	360.0	12960.0	360.0
29	9	21	360.0	12960.0	360.0
29	9	22	360.0	12960.0	360.0
29	9	23	360.0	12960.0	360.0
29	9	24	360.0	12960.0	360.0
29	9	25	360.0	12960.0	360.0
29	9	26	360.0	12960.0	360.0
29	9	27	360.0	12960.0	360.0
29	9	28	360.0	12960.0	360.0
29	9	29	360.0	12960.0	360.0
29	9	30	360.0	12960.0	360.0
29	9	31	360.0	12960.0	360.0
29	9	32	360.0	12960.0	360.0
29	9	33	360.0	12960.0	360.0
29	9	34	360.0	12960.0	360.0

2039
20-39

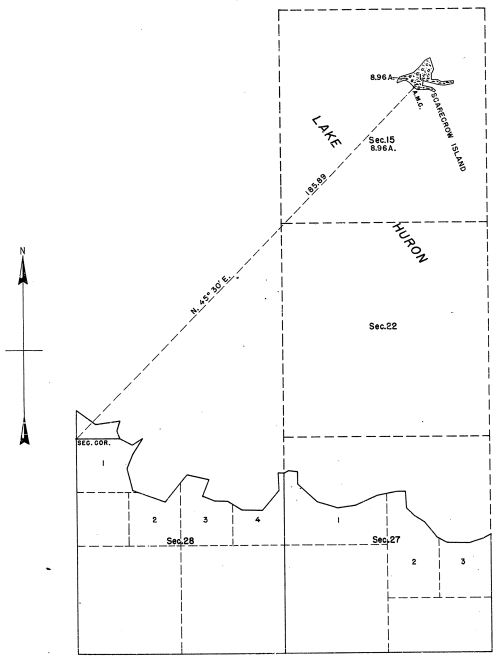
Section	By Whom Surveyed	Date of Contdpt.	Amount of Interest	When Surveyed	How changed to the present
29-34	James Nelson	Dec. 9 th 1829	7. 72. 23.	3 rd 1829	3 rd 1829
additions	None	21 st	31. 21. 57	2 nd 1829	

The above Map of Township 29 N. Range 9 E. of the
 County of Mackinac was prepared by the field notes
 of the survey placed in file in the Office, and has been examined and approved.
 Surveyors General's Office
 Mackinac, Mich. 5/1829
 E. P. Rogers

TOWNSHIP NO.29 NORTH, RANGE NO.9 EAST, OF THE MICHIGAN MERIDIAN, MICHIGAN.
 PLAT OF SCARECROW 'ISLAND IN SECTION 15.

20-39

20-39



MEMORANDUM.

THIS PLAT REPRESENTS THE SURVEY OF SCARECROW ISLAND IN LAKE HURON, WHICH WAS NOT INCLUDED IN THE ORIGINAL SURVEY OF THE TOWNSHIP, REPRESENTED ON THE PLAT APPROVED NOVEMBER 17, 1840.

THE SURVEY WAS EXECUTED PURSUANT TO AUTHORITY CONTAINED IN GENERAL LAND OFFICE LETTER 1861425 "S" DATED SEPTEMBER 1, 1941.

0 10 20 40 80
 SCALE: 1 INCH EQUALS 20 CHAINS.

AREA SURVEYED, 8.96 ACRES.

LINES DESIGNATED	BY WHOM SURVEYED	GROUP NO.	DATE OF SPECIAL INSTRUCTIONS	WHEN SURVEYED	
				BEGUN	COMPLETED
MEANDER CONNECTION	HAL D. CRAIG MORVILLE E. SHEARER	50	JULY 19, 1942.	SEPTEMBER 18, 1942.	SEPTEMBER 22, 1942.

UNITED STATES DEPARTMENT OF THE INTERIOR.
 GENERAL LAND OFFICE.

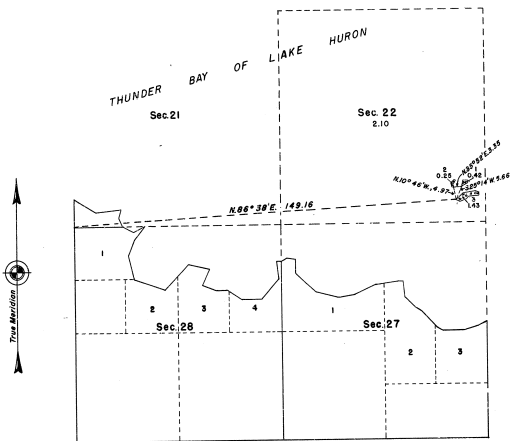
DENVER, COLORADO, NOVEMBER 27, 1943.
 THIS PLAT OF TOWNSHIP NO. 29 NORTH, RANGE NO. 9 EAST, OF THE MICHIGAN MERIDIAN, MICHIGAN, IS STRICTLY CONFORMABLE TO THE FIELD NOTES OF THE SURVEY THEREOF, WHICH HAVE BEEN EXAMINED AND APPROVED.

WASHINGTON, D. C., DECEMBER 7, 1943.
 THE SURVEY REPRESENTED BY THIS PLAT, HAVING BEEN CORRECTLY EXECUTED IN ACCORDANCE WITH THE REQUIREMENTS OF LAW AND THE REGULATIONS OF THIS OFFICE, IS HEREBY APPROVED.

William P. Smith
 SUPERVISOR OF SURVEYS

Joel David Hinkel
 ASSISTANT COMMISSIONER

TOWNSHIP N° 29 NORTH, RANGE N° 9 EAST, OF THE MICHIGAN MERIDIAN, MICHIGAN.
 PLAT OF THREE ISLANDS IN SECTION 22.



MEMORANDUM

This plat represents the survey of three islands in Thunder Bay of Lake Huron, which were not included in the original survey of the township, represented on the plat approved November 17, 1840.

The survey was executed pursuant to authority contained in General Land Office memorandum 200995 "C," dated December 29, 1944.

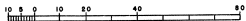
UNITED STATES DEPARTMENT OF THE INTERIOR
 GENERAL LAND OFFICE

Denver, Colorado, April 25, 1946.

This plat of Township No. 29 North, Range No. 9 East, of the Michigan Meridian, Michigan, is strictly conformable to the field notes of the survey thereof, which have been examined and approved.

Washington, D. C., July 15, 1946

The survey represented by this plat, having been correctly executed in accordance with the requirements of law and the regulations of this office, is hereby accepted.



Scale: 1 inch equals 20 chains. Area Surveyed, 2.10 Acres.

LINES DESIGNATED	BY WHOM SURVEYED	GROUP NO.	DATE OF SPECIAL INSTRUCTIONS	WHEN SURVEYED	
				BEGAN	COMPLETED
Meander Connection	Decey B. Walsh Hugh B. Crawford	53	September 6, 1945.	October 3, 1945.	October 4, 1945.

[Signature]
 Supervisor of Surveys.

[Signature]
 ACTING ASSISTANT COMMISSIONER