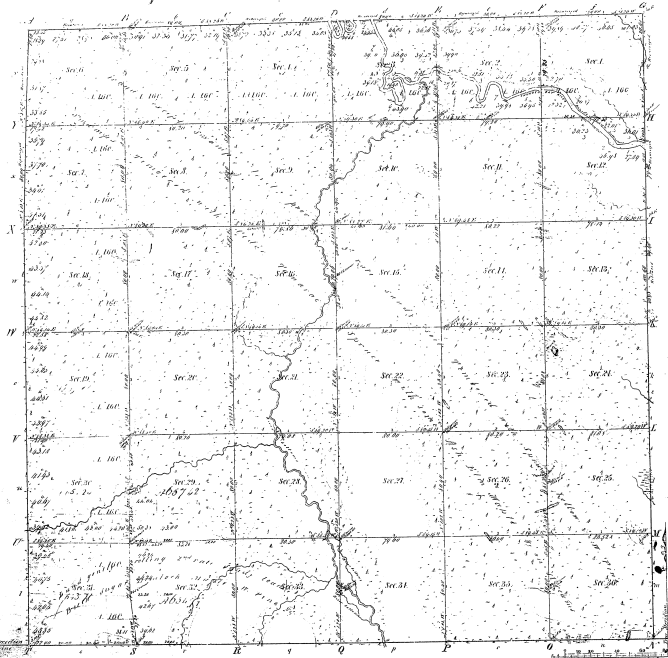


RESERVE  
Township 12 31 N. Range 127 E. Mec. Mich.



Mileage of		
Public Courses 1845	Public Courses 1847	Public Courses 1850
<div style="position: absolute; top: 20px; left: 20px; font-size: 2em; font-weight: bold;">13</div>	<div style="position: absolute; top: 20px; left: 20px; font-size: 2em; font-weight: bold;">13</div>	<div style="position: absolute; top: 20px; left: 20px; font-size: 2em; font-weight: bold;">13</div>

Mileage from Sec. 1 to

20-34

*Total number of Acres 22,422.00*

Survey designated	By whom surveyed	Date of Contract	Amount or Range	Acre Surveyed	Date of Survey
Township 12 31 N.	Levi Cross	March 29 <sup>th</sup> 1849	3 <sup>rd</sup> Range	22 <sup>42</sup> 00	2 <sup>nd</sup> Decr 1848
Subdivisions	Butler Iron	May 24 <sup>th</sup> 1848	3 <sup>rd</sup> Range	22 <sup>42</sup> 00	1 <sup>st</sup> Decr 1848
J. Bond's report	John Bondson	June 16 <sup>th</sup> 1848	3 <sup>rd</sup> Range	22 <sup>42</sup> 00	2 <sup>nd</sup> Decr 1848
J. Bond's report	Butler Iron	May 24 <sup>th</sup> 1848	3 <sup>rd</sup> Range	22 <sup>42</sup> 00	3 <sup>rd</sup> Decr 1848

The above Map of Township 12 31 N. Range 127 E. East of the Meridian, Michigan, is hereby approved by the field notes of the survey there on file in this office which have been examined and approved.

Surveyor General's Office  
Detroit, Mich. 9<sup>th</sup> Decr 1850

**Levi Cross**  
Surveyor

Copy made by