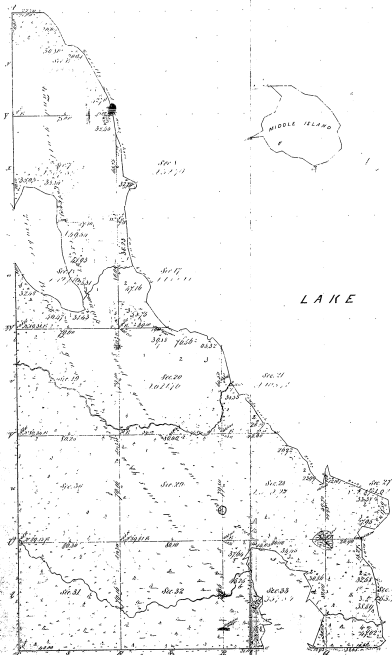


County  
Township N<sup>o</sup> 32 N. Range N<sup>o</sup> 9 E.

Mer. Mich.



LAKE HURON

Standard of  
Foot-measure 1852-Pain-Contour 1852-Pain-Contour 1852

20-19  
6109

See. The note appended, refer to

Serial number of plat 21553					
George Jorgensen	Actual front	200 ft of Contour	200 ft of Contour	200 ft of Contour	200 ft of Contour
Thomas Lee	200 ft of Contour	200 ft of Contour	200 ft of Contour	200 ft of Contour	200 ft of Contour
John J. Green	200 ft of Contour	200 ft of Contour	200 ft of Contour	200 ft of Contour	200 ft of Contour

The above plat of Township N. 32 N. Range N. 9 E. East of the  
Principal Meridian of Michigan is truly and correctly a true and  
correct copy of the original plat as the same has been examined and approved

Surveyor General's Office  
Detroit, April 6, 1887

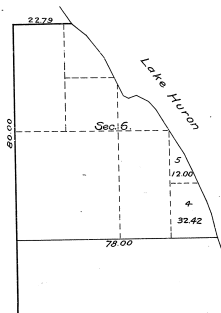
Sealed Under my Hand and Seal

Com. Cooper



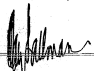
20-19  
20-19

**SUPPLEMENTAL PLAT**  
section 6, T.32 N., R. 9 E., Michigan Mer,  
**MICHIGAN**  
Scale: 20 chs. to an inch.



Department of the Interior,  
General Land Office,  
Washington, D.C., June 16, 1920.

This supplemental plat of section 6, T.32 N., R. 9 E., Michigan Mer,  
Michigan, is made for the purpose of segregating the land patented to  
the State as lot 4, by plat approved February 25, 1841, from the frac-  
tional E 1/2, SE 1/4 of section shown on plat approved April 16, 1857,  
and is hereby approved.

  
Commissioner and ex officio  
U.S. Surveyor General for Michigan.