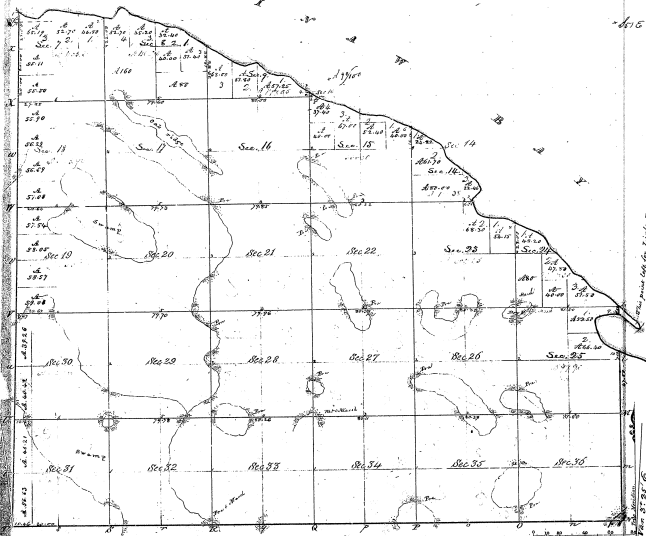


Township 5th 14th N., Range 6th E., Mer. Mich.



Boundaries of Section 14		Acres
North Corner	West Corner	
1	117.5	3.75
2	117.5	3.75
3	117.5	3.75
4	117.5	3.75
5	117.5	3.75
6	117.5	3.75
7	117.5	3.75
8	117.5	3.75
9	117.5	3.75
10	117.5	3.75
11	117.5	3.75
12	117.5	3.75
13	117.5	3.75
14	117.5	3.75
15	117.5	3.75
16	117.5	3.75
17	117.5	3.75
18	117.5	3.75
19	117.5	3.75
20	117.5	3.75
21	117.5	3.75
22	117.5	3.75
23	117.5	3.75
24	117.5	3.75
25	117.5	3.75
26	117.5	3.75
27	117.5	3.75
28	117.5	3.75
29	117.5	3.75
30	117.5	3.75
31	117.5	3.75
32	117.5	3.75
33	117.5	3.75
34	117.5	3.75
35	117.5	3.75
36	117.5	3.75

65
24-16
24-15

Total number of Acres 4,438.46					
Survey designated	By whom surveyed	Date of Exhibit	Amount of Survey	When Surveyed	Plan filed and in what file
District	George H. Weston	Dec. 11, 1836	66.68 77	3 rd 1836	1835
County line	George H. Weston	11. 22. 34		1834	

The above map of Township 5th 14th N., Range 6th E., Mer. Mich., Principal Meridian Michigan Territory, truly conforms to the full notes of the survey thereof on file, the correctness of which has been examined and approved.

George H. Weston, Surveyor General, Office, Detroit, Dec. 25, 1836.