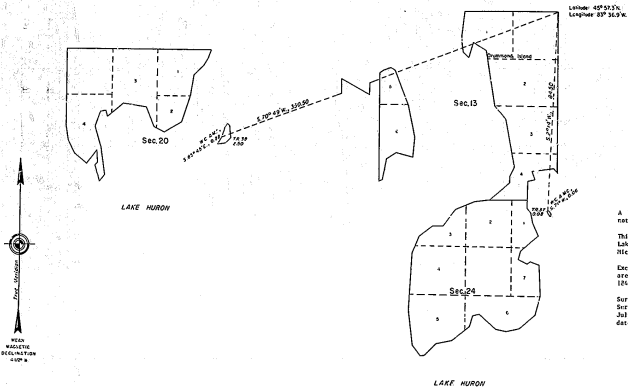


TOWNSHIP 41 NORTH, RANGE 6 EAST, OF THE MICHIGAN MERIDIAN, MICHIGAN.
SURVEY OF ISLANDS

33-30



UNITED STATES DEPARTMENT OF THE INTERIOR
BUREAU OF LAND MANAGEMENT
Denver, Colorado November 17, 1981

This plat is strictly conformable to the approved field notes, and the survey, having been correctly executed in accordance with the requirements of law and the regulations of this Bureau, is hereby accepted.

For the Director

Acting Chief, Cadastral Survey
Examination and Approval Staff