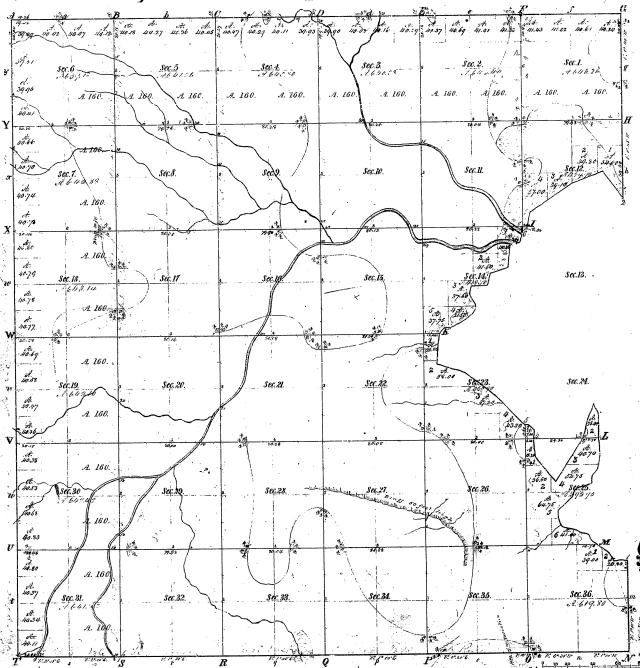


Township N° 44 N. Range N° 1 E.

Mer. Mich.



Boundaries of	Public Courses	SEC 14	Public Courses	SEC 15	Public Courses	SEC 16
33						
10						

33-10

Total number of Acres 20 735.32

Survey Designated	By Whom Surveyed	Date of Contact	Amount of Survey	When Surveyed	How far from and to what corner
Township Survey	Wm. W. Fisher	August 17, 1840	M. 63 1/2 Lk.	1840	
Subdivisions	Salem G. Wallis	Nov 27, 1861	63 1/2 Lk. 2 1/2	1860	

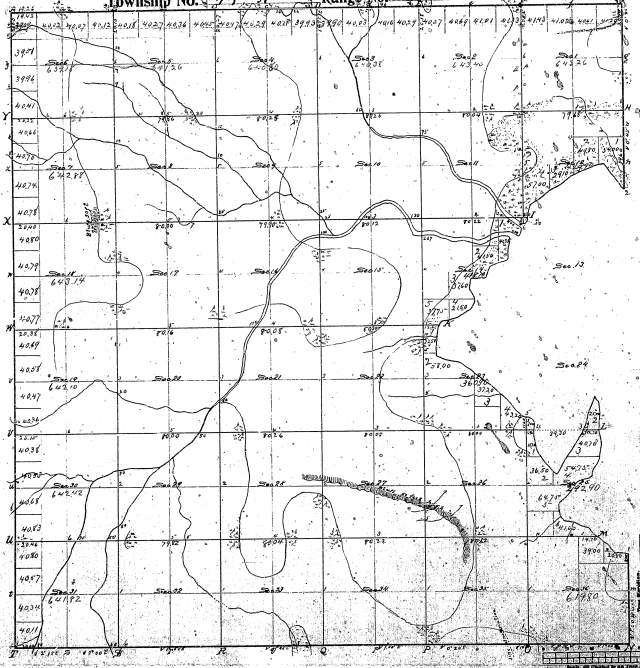
The above Report of Township N° 44 N. Range N° 1 E. was presented to the General Assembly of Michigan at its session in the fall of 1841 and approved as a public course to be followed by the survey thereof on the 1st of October 1841.

Surveyor General's Office
 Detroit, December 27, 1841

Salem G. Wallis, Surveyor

Rep. 1841

Township No. 44 N. Range No. 4 E. Mer. Mich



Total Number of Acres. 20 730 3/4

Subdiv. Description.	By Whom Acquired.	Date of Conveyance.	Amount of Acres.	When Acquired.	Remarks.
Township Lines	R. A. Covert	Aug 28 1890	36	gr 1845	
Subdivisions	John D. Smith	April 30 1890	62 7/8	gr 1845	

Abstracts of

From	Conveyance	Use the State	State	Conveyance	Use the State	State	Conveyance	Use the State

The above Map of Township No. 44 N. of Range No. 4 East of the Principal Meridian Michigan is strictly conformable to the field notes of the survey thereof on file in this office, which have been examined and approved.

W. H. H. [Signature] Surveyor General
 Detroit, December 20 1890

21-10-1890