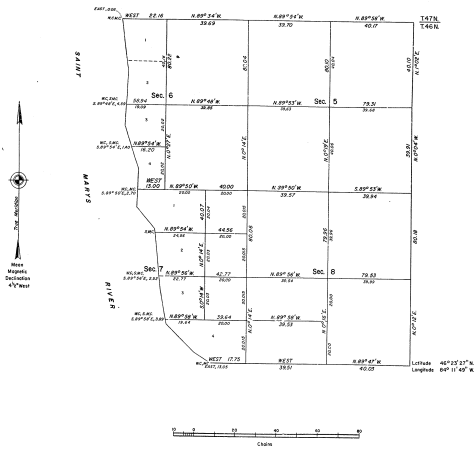


TOWNSHIP 46 NORTH, RANGE 2 EAST, OF THE MICHIGAN MERIDIAN, MICHIGAN
DEPENDENT RESURVEY AND SURVEY



A history of surveys is contained in the field notes.

This plat represents a dependent resurvey of a portion of the South boundary, a portion of the west-southwestern line, designed to restore the corners in their true original position according to the best available evidence, and the modification of sections 5, 6, 7 and 8 in T. 46 N., R. 2 E., Michigan Meridian, Michigan, for the purpose of reorganizing Indian land.

This survey was executed by Stephen C. Kopach, Cadastral Surveyor, beginning June 11, 1979 and completed August 20, 1979, pursuant to Special Instructions for Group 16, Michigan, dated June 3, 1975.

UNITED STATES DEPARTMENT OF THE INTERIOR
BUREAU OF LAND MANAGEMENT
Denver, Colorado December 4, 1979

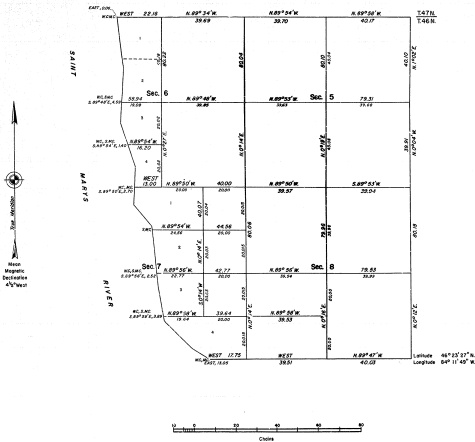
This plat is strictly conformable to the approved field notes, and the survey, having been carefully examined in accordance with the requirements of law and the regulations of this Bureau, is hereby accepted.

For the Director

J. D. Woodman

Chief, Cadastral Survey
Examination & Approval Staff

TOWNSHIP 46 NORTH, RANGE 2 EAST, OF THE MICHIGAN MERIDIAN, MICHIGAN
DEPENDENT RESURVEY AND SURVEY



A history of surveys is contained in the field notes.

This plat represents a dependent resurvey of a portion of the North boundary, a portion of the subdivision lines, designed to restore the corners to their true original position according to the best available evidence, and the subdivision of sections 5, 6, 7 and 8 in accordance with Section 36, Michigan Meridian, Michigan, for the purpose of segregating Indian lands.

This survey was conducted by Stephen C. Kopsch, Cadastral Surveyor, beginning June 17, 1975 and completed August 20, 1975, pursuant to Special Instructions for Group 7a, Michigan, dated June 4, 1975.

UNITED STATES DEPARTMENT OF THE INTERIOR
BUREAU OF LAND MANAGEMENT
Denver, Colorado September 4, 1975

This plat is strictly conformable to the approved field notes, and the survey, having been correctly executed in accordance with the requirements of law and the regulations of this Bureau, is hereby accepted.

For the Director

J. C. Anderson

Chief, Cadastral Survey
Documentation & Approval Staff