

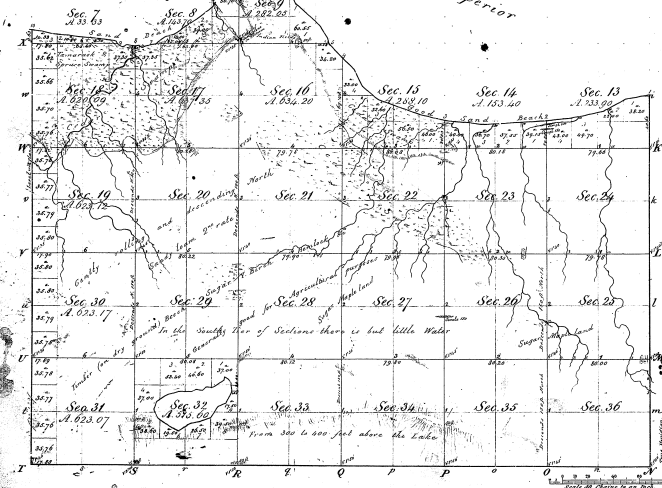
Township N^o 47 N. Range N^o 5 W.

Mer. Mich.

34-9

Tahquamenon Bay

Lake Superior



Number of
 Poths Carries 15122 Poths Carries 15122 Poths Carries 15122
 34-9

Total number of Acres 11371.08

Survey	When Surveyed	Date of Conveyance	Amount of Survey	When Surveyed	When Conveyed to the Government
Township Lines	1837	Jan. 11 1840	9 34 00	1837	1840
Section Lines	Henry McMillan	Jan. 29 1840	10 37 08	1837	1840

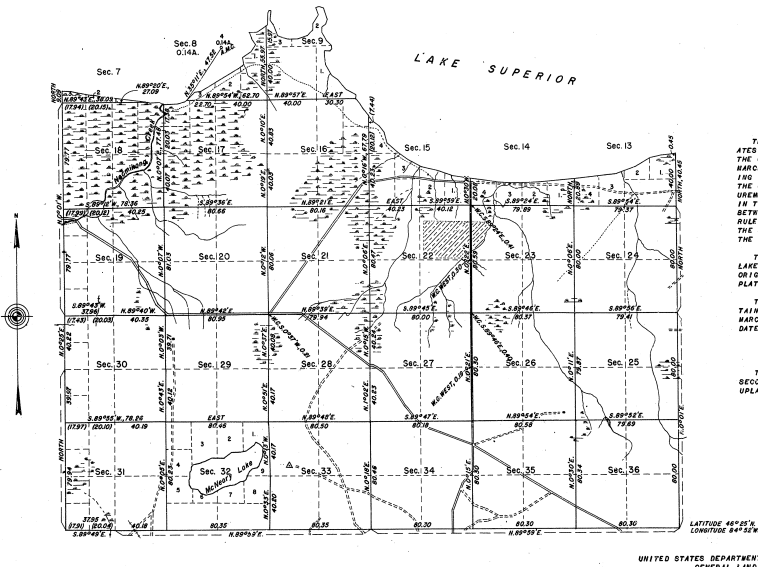
The above Map of Township N^o 47 North of Range N^o 5 West of the Principal Meridian, Michigan, is hereby certified to be a full and true copy of the original filed in this office, and has been examined and approved.

Surveyor General's Office
 Detroit, Jan. 1 1860

Carroll Belmont
 Register

TOWNSHIP NO. 47 NORTH, RANGE NO. 5 WEST, OF THE MICHIGAN MERIDIAN, MICHIGAN.
DEPENDENT RESURVEY.

34-9
②
34-9



MEMORANDUM

THIS PLAT OF THE RESURVEY OF T. 47 N., R. 5 W., DELINEATES A RETRACEMENT AND REESTABLISHMENT OF THE LINES OF THE ORIGINAL SURVEY, AS SHOWN UPON THE PLAT APPROVED MARCH 14, 1895, IN THEIR TRUE ORIGINAL POSITIONS ACCORDING TO THE BEST AVAILABLE EVIDENCE OF THE POSITION OF THE ORIGINAL CORNERS. ALL DIFFERENCES BETWEEN THE MEASUREMENTS SHOWN ON THE ORIGINAL PLAT AND THOSE REVEALED IN THE RETRACEMENTS HAVE BEEN DISTRIBUTED PROPORTIONALLY BETWEEN ACCEPTED CORNERS IN ACCORDANCE WITH SURVEYING RULES. REFERENCE WILL BE MADE TO THE ORIGINAL PLAT FOR THE SHOWING OF AREAS AND MORE DETAILED DESCRIPTIONS OF THE VARIOUS SMALLER SUBDIVISIONS.

THIS PLAT ALSO REPRESENTS THE SURVEY OF AN ISLAND IN LAKE SUPERIOR, IN SEC. 8, WHICH WAS NOT INCLUDED IN THE ORIGINAL SURVEY, NOR SHOWN UPON THE OFFICIAL TOWNSHIP PLAT.

THE RESURVEY WAS EXECUTED PURSUANT TO AUTHORITY CONTAINED IN GENERAL LAND OFFICE LETTER 1408604 "C" DATED MARCH 4, 1931, WHICH BEARS DEPARTMENTAL APPROVAL UNDER DATE OF MARCH 5, 1931.

THE TOWNSHIP SUPPORTS A HEAVY STAND OF VIRGIN AND SECOND GROWTH MAPLE, BEECH, AND BIRCH TREES ON THE UPLAND AREAS, WITH DENSE CEDAR AND SPRUCE IN THE SWAMPS.

UNITED STATES DEPARTMENT OF THE INTERIOR
GENERAL LAND OFFICE

DENVER, COLORADO, MAY 29, 1942.
THIS PLAT OF TOWNSHIP NO. 47 NORTH, RANGE NO. 5 WEST, OF THE MICHIGAN MERIDIAN, MICHIGAN, IS STRICTLY CONFORMABLE TO THE FIELD NOTES OF THE RESURVEY THEREOF, WHICH HAVE BEEN EXAMINED AND APPROVED.

James M. Minner
SUPERVISOR OF SURVEYS.

WASHINGTON, D.C., DECEMBER 10, 1942.
THE RESURVEY REPRESENTED BY THIS PLAT, HAVING BEEN CORRECTLY EXECUTED IN ACCORDANCE WITH THE REQUIREMENTS OF LAW AND THE REGULATIONS OF THIS OFFICE, IS HEREBY APPROVED.

Geoff David Woodcock
ASSISTANT COMMISSIONER.

LINES DESIGNATED	BY WHOM SURVEYED	GROUP NO.	DATE OF SPECIAL INSTRUCTIONS		DAYS SURVEYED	
			BEGUN	COMPLETED	BEGUN	COMPLETED
External						
Subdivisional	Oscar S. Welsh	37	July 9, 1935	Aug 26 1936	July 15 1937	
Meanders	and					
Connections	Tom V. Wilder					

100 0 10 20 40 60 80
Scale: 1 inch equals 40 chains.
Area Resurveyed 14,371.08 Acres
Area Surveyed 614 Acres