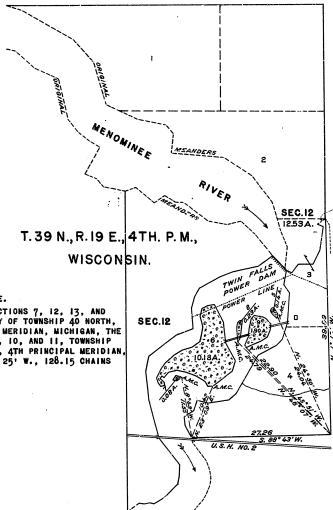
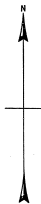


TOWNSHIP NO. 40 NORTH, RANGE NO. 31 WEST, MICHIGAN MERIDIAN, MICHIGAN.

PLAT OF FIVE ISLANDS IN MENOMINEE RIVER, SECTION 12.

46-1

46-1



T. 39 N., R. 19 E., 4TH. P. M.,
WISCONSIN.

NOTE.

FROM THE CORNER OF SECTIONS 7, 12, 13, AND 15, ON THE EAST BOUNDARY OF TOWNSHIP 40 NORTH, RANGE 31 WEST, MICHIGAN MERIDIAN, MICHIGAN, THE CORNER OF SECTIONS 2, 3, 10, AND 11, TOWNSHIP 39 NORTH, RANGE 19 EAST, 4TH PRINCIPAL MERIDIAN, WISCONSIN, BEARS N. 65° 29' W., 128.15 CHAINS DISTANT.



SCALE: 10 CHAINS TO AN INCH.

AREA SURVEYED, 12.55 ACRES.

LINES DESIGNATED	BY WHOM SURVEYED	GROUP NO.	DATE	MILEAGE		WHEN SURVEYED	
				MLS.	CHS.	BEGUN	COMPLETED
EXTERIOR				0	39.99		
SUBDIVISIONAL	OSCAR B. WALSH,	45	AUG. 18,	0	27.46	SEPT. 7,	SEPT. 19,
MEANDER	SURVEYOR.		1958.	2	57.96	1958.	
CONNECTION				2	66.99		

MEMORANDUM.

THIS PLAT REPRESENTS THE SURVEY OF FIVE ISLANDS IN THE MENOMINEE RIVER IN SECTION 12, WHICH WERE NOT INCLUDED IN THE ORIGINAL SURVEY OF THE TOWNSHIP AS SHOWN UPON THE PLAT APPROVED APRIL 10, 1890, NOR IN THE SURVEY OF TOWNSHIP 39 NORTH, RANGE 19 EAST, WISCONSIN, ON THE OPPOSITE SIDE OF THE RIVER.

THE SURVEY WAS EXECUTED PURSUANT TO AUTHORITY CONTAINED IN GENERAL LAND OFFICE LETTER 1666495 "E" DATED NOVEMBER 12, 1937, WHICH BEARS DEPARTMENTAL APPROVAL UNDER DATE OF NOVEMBER 16, 1937.

OFFICE OF THE SUPERVISOR OF SURVEYS.
DENVER, COLORADO, JANUARY 31, 1939.

THE ABOVE PLAT OF FIVE ISLANDS IN THE MENOMINEE RIVER IN SECTION 12, TOWNSHIP NO. 40 NORTH, RANGE NO. 31 WEST, MICHIGAN MERIDIAN, MICHIGAN, IS STRICTLY CONFORMABLE TO THE FIELD NOTES OF THE SURVEY THEREOF, WHICH HAVE BEEN EXAMINED AND APPROVED.

Wm. M. Brown
SUPERVISOR OF SURVEYS.

UNITED STATES
DEPARTMENT OF THE INTERIOR.

GENERAL LAND OFFICE,
WASHINGTON, D. C., JANUARY 27, 1940.

THE SURVEY REPRESENTED BY THIS PLAT, HAVING BEEN CORRECTLY EXECUTED IN ACCORDANCE WITH THE REQUIREMENTS OF LAW AND THE REGULATIONS OF THIS OFFICE, IS HEREBY ACCEPTED.

John David Wolford
ACTING ASSISTANT COMMISSIONER.