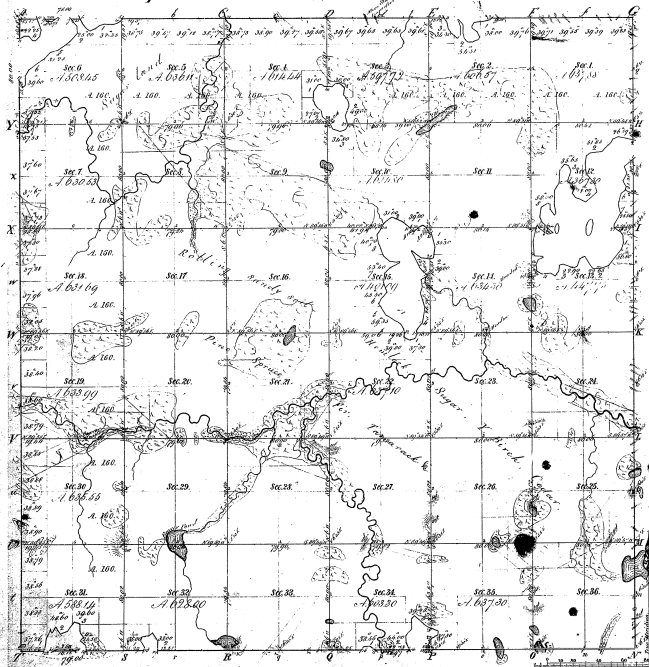


Township 1° 45' N Range 1° 40' W Mer. Mich.



Boundaries of

100.1	100.2	100.3	100.4	100.5	100.6	100.7	100.8	100.9	100.10	100.11	100.12	100.13	100.14	100.15	100.16	100.17	100.18	100.19	100.20	100.21	100.22	100.23	100.24	100.25	100.26	100.27	100.28	100.29	100.30	100.31	100.32	100.33	100.34	100.35	100.36
-------	-------	-------	-------	-------	-------	-------	-------	-------	--------	--------	--------	--------	--------	--------	--------	--------	--------	--------	--------	--------	--------	--------	--------	--------	--------	--------	--------	--------	--------	--------	--------	--------	--------	--------	--------

43-27

A. 100.16
A. 100.17
A. 100.18

43-27

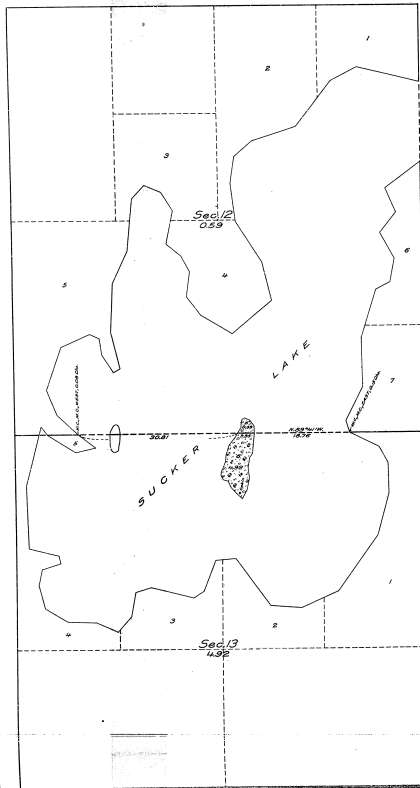
Total number of acres: 27,066.01

Survey designated	By Whom Surveyed	Date of Contract	Amount of Survey	When Surveyed	When the land was surveyed
Township lines	R. E. & H. B. Reed	August 1857	72 56 25	1857	1857
Section divisions	W. H. Reed	April 1860	72 56 25	1860	1860

The above map of Township 1° 45' N, Range 1° 40' W, Mer. Mich. of the Principal Meridian Michigan, is the original of the survey done in file in the Office and has been examined and approved.

Surveyor General of Michigan Charles W. Allen
 Detroit July 20 1860

PLAT OF AN ISLAND
 Sucker Lake.
 Secs. 12 and 13, T. 45 N., R. 40 W.,
 Mer. MICHIGAN.



LEGEND.

Scale: 1 inch = 10 chains.

Surveyed by Guy R. Veal, U. S. Cadastral Engineer, on October 4 and 6, 1922, under supplemental special instructions for Group No. 4, Michigan, dated August 25, 1922, issued by Arthur S. Eddy, Associate Supervisor of Surveys, which were approved by the Commissioner of the General Land Office on September 8, 1922.

Area of lands surveyed = 5.51 Acres, not shown upon the plat approved July 2, 1922.

Areas of previously surveyed lands not shown.

The undersigned hereby certifies that the survey delineated upon this plat has been executed under his general direction and in accordance with the approved supplemental special instructions, issued pursuant to authority contained in office letter 128993 of 1922, dated May 20, 1922, addressed to the Secretary of the Interior (approved May 25, 1922), and in letter dated June 1, 1922, and that the field notes and the plat of the survey have been carefully verified.

Denver, Colorado.
 January 9, 1924.

W. H. Johnson
 Superintendent of Surveys.

Department of the Interior, 11740
 General Land Office.

Washington, D. C., January 22, 1924.



The above plat of an Island in Sucker Lake in Sections 12 and 13, Township 45 North, Range 40 West, of the Michigan Meridian, in the State of Michigan, is strictly conformable to the field notes of the survey thereof, on file in this office, which have been examined and approved.

William Spry
 Commissioner and ex officio
 U. S. Surveyor General for Michigan.

43-2
 43-27-6