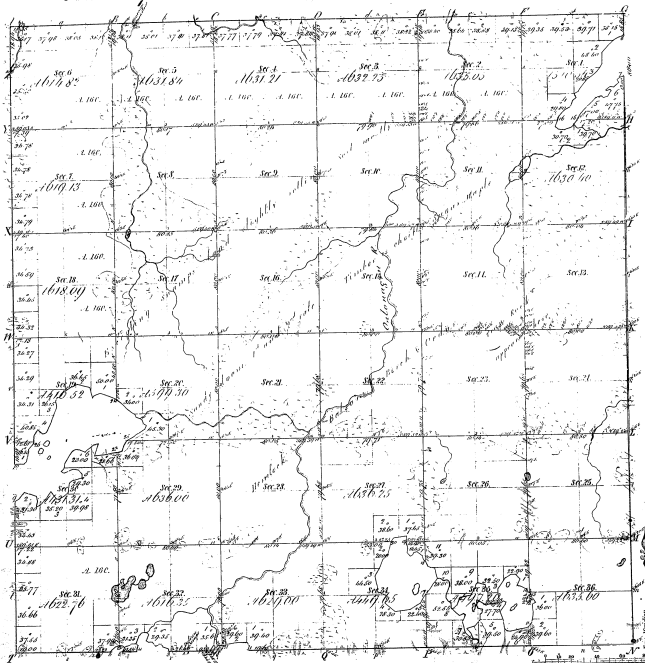


Township 1° 45' N. Range 4° 41' W. Mer. Mich.



Sections of	Public Courses 1816	Public Courses 1824	Public Courses 1832
10	18		
Islands: 15. Pieces of 7 & about 17 Islands			

43-28

Total number of acres 23045.27

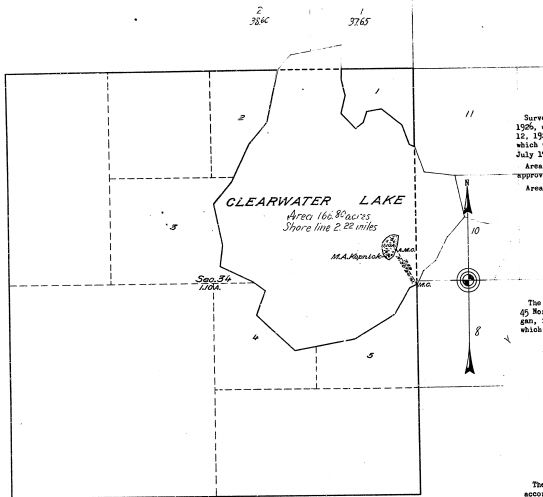
Survey designated	By Whom Surveyed	Date of Conduct	Amount of Survey	When Surveyed	By Whom Surveyed
Danahy's	H. B. & D. D. C.	April 27 1857	16 36 1/2	1857	H. C. 16 36 1/2
W. H. C. 16 36 1/2		April 27 1857	16 36 1/2	1857	H. C. 16 36 1/2

The above copy of Township 1° 45' N. Range 4° 41' W. Mer. Mich. is hereby confirmed to the field notes of the survey thereon on file in this Office which have been compared and approved.

Surveyor General's Office  
 Detroit Nov. 25 1857  
 Master: [Signature]  
 Supt: [Signature]

Plat of an Island in Clearwater Lake, Sec. 34, T. 45 N., R. 41 W., Mich. Mer., Michigan.

43-24  
43-28



LEGEND.

Scale: 1 inch = 10 chains.

Surveyed by Guy B. Neal, U. S. Cadastral Engineer, on October 9 and 10, 1926, under special instructions for Group No. 12, Michigan, dated July 15, 1926, issued by the Technical Assistant to the Supervisor of Surveys, which were approved by the Commissioner of the General Land Office on July 17, 1926.

Area of lands surveyed = 1.10 acres, not shown upon the original plat approved November 22, 1926.

Areas of previously surveyed lands not shown.

Office of U. S. Supervisor of Surveys.

Denver, Colorado, August 11, 1927.

The above plat of an island in Clearwater Lake in Section 34, Township 45 North, Range 41 West, of the Michigan Meridian, in the State of Michigan, is strictly conformable to the field notes of the survey thereof, which have been examined and approved.

*Thomas P. Simon*  
U. S. Supervisor of Surveys.

DEPARTMENT OF THE INTERIOR.

GENERAL LAND OFFICE.

Washington, D. C., October 3, 1927

The survey represented by this plat, having been correctly executed in accordance with the requirements of law and the regulations of this office, is hereby accepted.

*Wm. C. Howell*  
Assistant Commissioner.