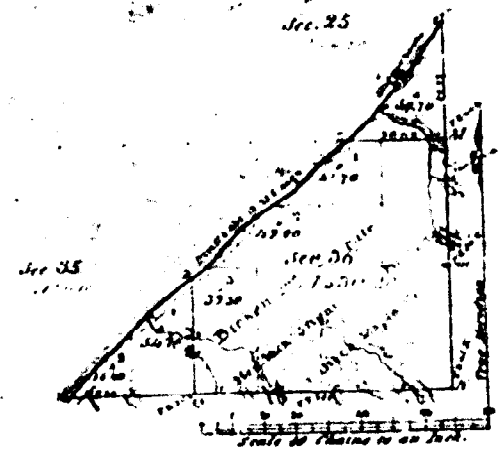


Township N<sup>o</sup> 50N Range N<sup>o</sup> 16W Mer. Mich.

42-1

Warrant of  
Township Clerk

LAKE SUPERIOR.



Total number of Acres (cont'd)

No. of Secs. Surveyed	Date of Contract	Amount of Survey M. P. A. L.	When Surveyed	When Claimed in the Sec. Cont. Act
2	April 27 1857	2 03 17	Eccege 1857	
2	March 29 1857	2 03 17	Eccege 1857	

The above Map of Township N<sup>o</sup> 50N north of Range N<sup>o</sup> 16W West of the  
Principal Meridian, Michigan is truly & accurately a copy of the  
of the survey thereof on file in this Office, which have been examined and approved  
Surveyor General's Office  
Richard Lamb, Jr. 1857  
Lucius Lyon, Secy