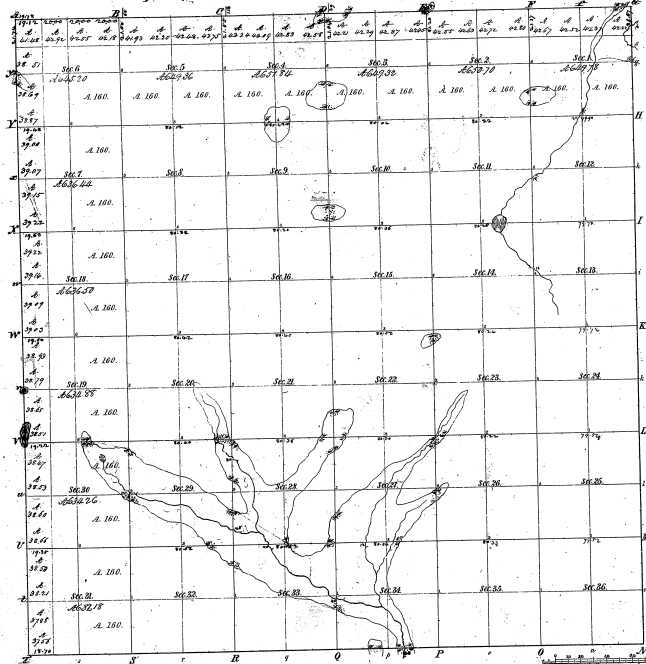


Township No. 25 N. Range No. 11 West Mer. (Mic.)



Total number of Acres 33,116.24

| Survey Designated | By Whom Surveyed | Date of Contract | Amount of Survey | When Surveyed | Range of the said land in the Sec. Cont. Town |
|-------------------|------------------|------------------|------------------|-------------------------|---|
| Sec. 14-17-23 | A. B. R. Co. | Aug. 25, 1838 | Ac. 24 | 1838 | 3 ^d gr. 1839 |
| Township 25 N. | A. B. R. Co. | Aug. 25, 1838 | Ac. 24 | 1838 | 3 ^d gr. 1839 |
| Subdivisions | A. B. R. Co. | Aug. 25, 1838 | Ac. 24 | 1838 | 3 ^d gr. 1839 |
| S. G. W. Co. | S. G. W. Co. | Nov. 4, 1836 | S. 78. 70 | 3 ^d gr. 1838 | 1 st |

The above copy of Township No. 25 N. Range No. 11 West of the Principal Meridian, Michigan, is a true and correct copy of the survey thereof on file in the office of the Survey General of Michigan, and approved.

Survey General of Michigan
 Cincinnati, July 25, 1839

| Menders of | | Public Courses | | Private Courses | | Public Courses | | Private Courses | |
|------------|---------|----------------|---------|-----------------|---------|----------------|---------|-----------------|---------|
| Public | Private | Public | Private | Public | Private | Public | Private | Public | Private |
| 16-23 | | | | | | | | | |
| 16-23 | | | | | | | | | |