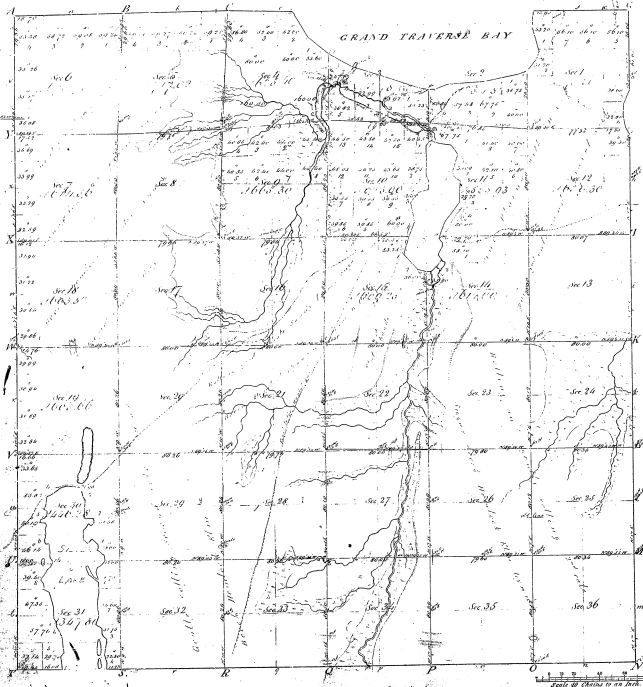


Re Survey of
 Township N^o 27 N. Range N^o 11 W Mer. Mich.



16-15-19

Section	Acres	Owner	Acres	Owner	Acres	Owner
1						
2						
3						
4						
5						
6						
7						
8						
9						
10						
11						
12						
13						
14						
15						
16						
17						
18						
19						
20						
21						
22						
23						
24						
25						
26						
27						
28						
29						
30						
31						
32						
33						
34						
35						
36						

Note: The blue figures and marks show the location of the old corners and lines. The lots in sec. 28, 29 and 30 colored with the yellow shade, have been sold.

Mer. Sec. 11 Range N 27 R 11 W

Total number of Acres 21646.60

Survey Disposed	By Whom Surveyed	Date of Contract	Number of Sections	Acres	When Surveyed	By Whom Surveyed
Survey made	John W. Brown	April 1850	6	27.50	1850	John W. Brown
St. Brown's	Lewis S. Brown	April 1850	6	61.00	2 ^d June 1850	John W. Brown
Subdivided	Lewis S. Brown	April 1850	6	62.10	1 st June 1850	John W. Brown

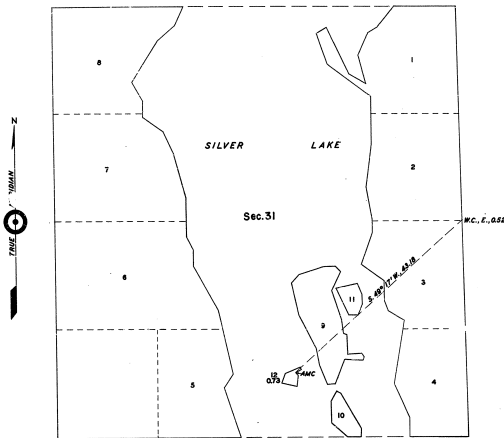
The above plat of Township N^o 27 North of Range N^o 11 West of the Principal Meridian Michigan is a plat conformable to the plat and field survey of said township and range and is a true and correct plat of the same.

Surveyor General's Office
 Detroit, Mich. 25th 1851

Wm. H. H. H.
 Secy Genl

TOWNSHIP 27 NORTH, RANGE 11 WEST, MICHIGAN MERIDIAN, MICHIGAN
SURVEY OF ISLAND IN SECTION 31

Field Notes of Survey



Surveys as represented hereon were executed with a Gurley solar transit, constructed in accordance with Bureau specifications, which transit was in good condition, and was placed in satisfactory adjustment and tested prior to undertaking this work. Directions of all lines refer to the true meridian and were determined by the solar method or by prolongation of celestial observations. Distances are expressed in chains, measured on the slope and reduced to horizontal equivalents.

The point for the $\frac{1}{2}$ sec. cor. of secs. 31 and 32, was determined from data in a recorded deed, obtained at a local survey office in Traverse City, which point has been recognized and accepted in the subdivision and conveyance of nearby lands. The point falls in a black-topped county road where I drive a railroad spike.

At a point East, 52 lks. dist., and on easterly $\frac{1}{4}$ N of road, set a regulation iron post, 2 $\frac{1}{2}$ ins. diam., for witness corner, with brass cap mtd.

W C
S 11 S 32
T 27 N R 11 W
1958

No accessories available.

Thence, S. 49° 17' W., 43.18 chs. to the point for the auxiliary meander cor. on the island in Silver Lake, by traversing.

At the point for the AMC, set a regulation iron post, 2 $\frac{1}{2}$ ins. diam., with brass cap mtd.

AMC

T 27 N R 11 W
S 31
1958

from which

A cedar, 6 ins. diam., bears S. 113° W., 120 lks. dist., mtd. S31 AMC BT.
A cedar, 4 ins. diam., bears S. 30° 20' W., 100 $\frac{1}{2}$ lks. dist., mtd. S31 AMC BT.
A concrete monument, flush with ground, bears N. 105° E., 6.7 lks. dist.; this is an angle point of a local subdivision.
The point for the $\frac{1}{2}$ sec. cor. of secs. 31 and 32, bears N. 49° 17' E., 43.18 ins. dist.

Meanders of Island

From AMC, thence meander the island, along a well-defined shore, sloping right.

N. 67° 30' E., 1.30 chs. Midpoint on the southerly side of the connecting bar bet. the island and Pringle Island; thence across bar on line normal to shore.
N. 23° 00' W., 0.35 ch. Midpoint on the northerly side of connecting bary thence along shore.
S. 67° 00' W., 3.30 chs.
S. 25° 10' W., 1.00 chs.
S. 77° 30' E., 3.00 chs.
N. 1° 15' E., 2.00 chs.
W. 32° 00' W., 0.58 chs. To the AMC and place of beginning.

General Description

The island is of sandy and gravelly loam formation, with some cobblestone, and reaches approx. 9 ft. above the present level of Silver Lake; the lake has receded several feet in the past 25 years, exposing a connecting bar between this island and Pringle Island, but the center portion of the island is very definitely above the highest apparent level of the lake. This survey has included that portion of the connecting bar, to its apparent mid-point, which is riparian to the surveyed island.
Timber on the island consists of cedar, white birch, survey pine, locust, ash, bals of gilead and one white pine, ranging in size from 4 to 12 ins. The timber in the center part of the island which was above the lake level before it receded.

There are no improvements on the island but there has been a recent local subdivisional survey thereof, connected with the subdivisional survey of Pringle Island.

The formation of the island, with gravel and stone, and the timber growth thereon, attest to the fact that its center portion was in existence in 1867, when Michigan was admitted into the Union, and in 1859, the date of original survey, and all subsequent dates, and therefore has the status of public lands. The island is upland in character.

UNITED STATES DEPARTMENT OF THE INTERIOR
BUREAU OF LAND MANAGEMENT

Washington, D.C. August 4, 1959

This plan is strictly conformable to the above field notes of survey, which have been critically examined and found correct, and are hereby approved, and the survey, having been properly executed in accordance with the requirements of law and the regulations of this Bureau, is hereby accepted.

For the Director
Ralph E. Crawford
District Engineering Officer

I HEREBY CERTIFY UPON HONOR that, in pursuance of Special Instructions for Group 67, Michigan, bearing date of August 5, 1959, and Assignment Instructions dated August 5, 1959, I surveyed on September 10, 1959, the island in Silver Lake, Sec. 31, T. 27 N., R. 11 W., Michigan Meridian, in the State of Michigan, which is represented by this diagram and field notes of survey, and that said survey has been made in strict conformity with said instructions, the Manual of Instructions for Survey of the Public Lands of the United States, and in the specific manner described in the notes of survey.

Ralph E. Crawford

June 19, 1959.

Ralph E. Crawford
Cadastral Surveyor

PLAT OF CAMPBELL ISLAND

in Silver Lake, in Sec. 31, Tp. 27 N., R. 11 W., Mich. Mer.

MICHIGAN.

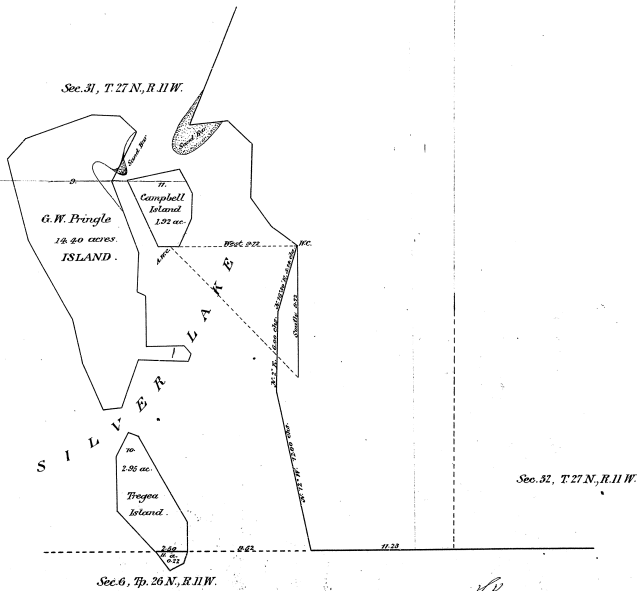
Surveyed by Coburn P. Tuller, U.S. Dep. Surveyor,
under special instructions from the Com' G. L. O. dated July 25th 1901,

Scale: 1 inch to 7 chains.

16-15

P.B.

16-15-4



Department of the Interior,
General Land Office,
Washington, D.C. Feb. 17-1902.

5-20-02

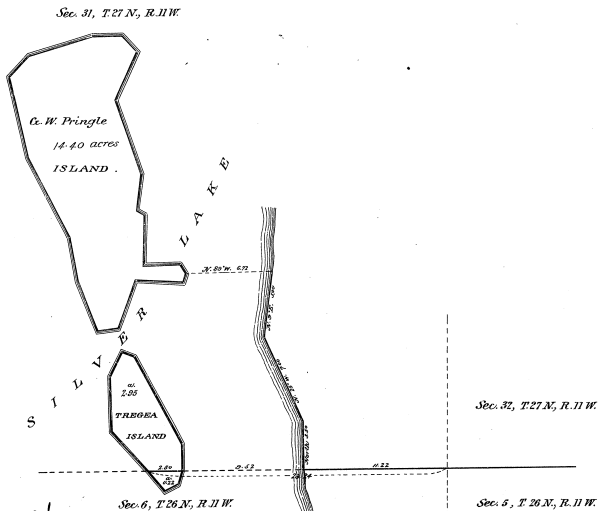
The above plat of Campbell Island, in Silver Lake, in Sec. 31, Tp. 27 N., R. 11 W., Mich. Mer., Michigan, is a correct plat of a survey executed by Coburn P. Tuller, U.S. Deputy Surveyor, in pursuance of special instructions from the Commissioner of the General Land Office, bearing date July 25th 1901, and is strictly conformable to the field notes thereof, on file in this office, which have been examined and approved.

[Signature]
Commissioner and ex-officio
Surveyor General for Michigan.

15
16 — 17

16-15-2

PLAT of two Islands
in Silver Lake, in Sec. 31, Tps. 27 N., R. 11 W., & Sec. 6, Tps. 26 N., R. 11 W.
Mich. Mer., Michigan.
Surveyed by George A. Ford, U.S. Dep. Surveyor,
under special instructions from the Comr G.L.O. dated Aug. 31st 1900.
Scale: 1 inch to 4 chains.



J.P.A.

DEPARTMENT OF THE INTERIOR,
 General Land Office,
 Washington D.C. August 7th 1901.

The above plat of two Islands, in Silver Lake, in Sec. 31, Tps. 27 N., R. 11 W., and Sec. 6, Tps. 26 N., R. 11 W., Mich. Mer., Michigan, is a correct plat of a survey executed by George A. Ford, U.S. Deputy Surveyor, in pursuance of special instructions from the Commissioner of the General Land Office, bearing date August 31st 1900, and is strictly conformable to the field notes thereof, on file in this office, which have been examined and approved.

f.k.

August 10, 1901
 Commissioner ex officio Surveyor General for Michigan.