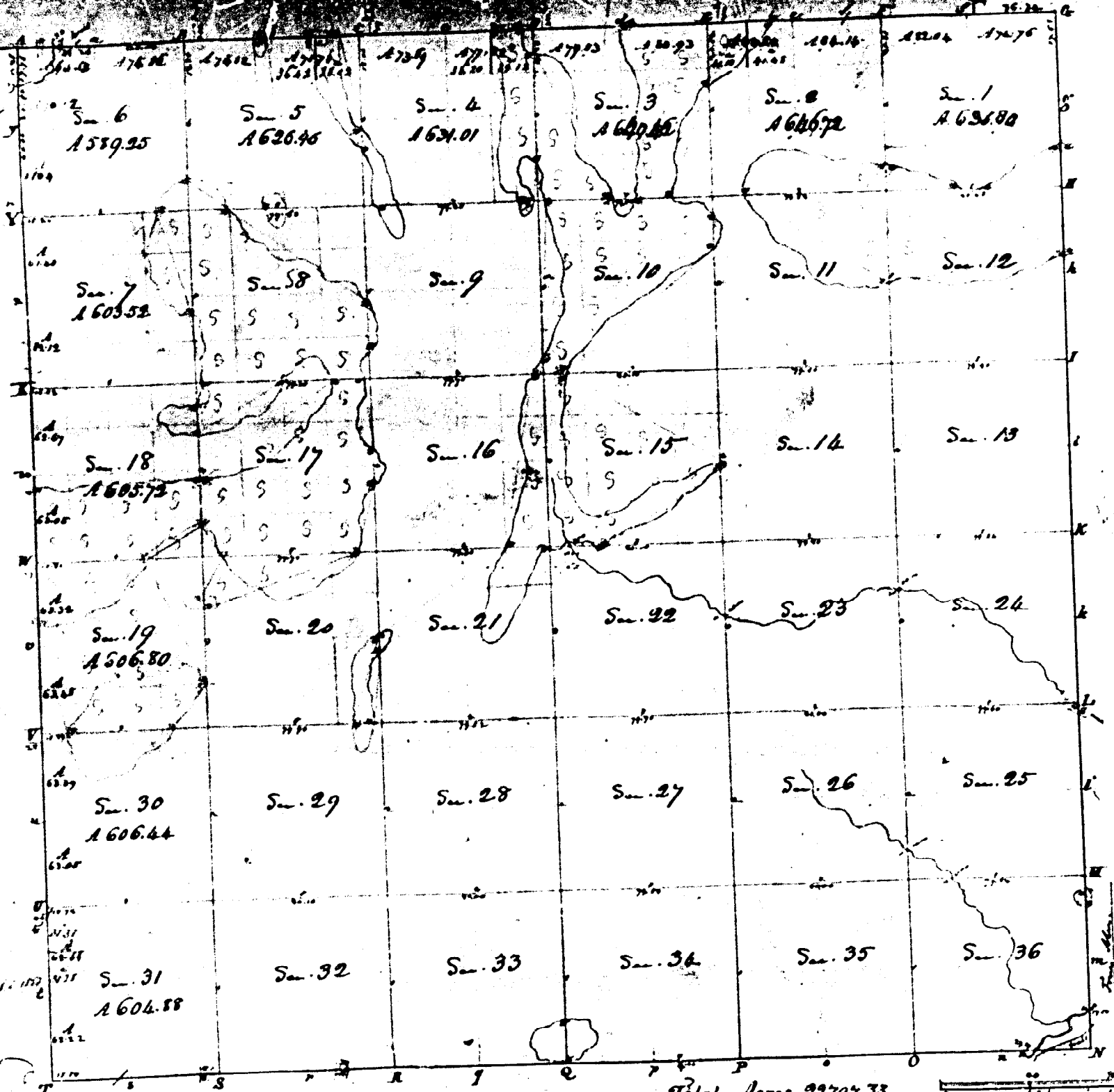


Range N. 10 West Mer. (Mch. 1832)

5-1



Total Acres 22797.33

Scale 1 in. = 40 ch. to an in.

Survey designated	By whom surveyed	Date of Contract	No. of Survey	When Surveyed	When finished
Dist boundary	R. Clark	17. Nov. 1830	19	19	1831
Subdivision	D. P. Dixon	30	59, 56, 78	49	1832

The above map, of Township N. 10 N., Range N. 10 W. of the Principal Meridian, Michigan Territory, is strictly conformable to the field notes of the survey thereof, on file in the office of the Surveyor General, and has been examined and approved.

Surveyor General's Office, E. M. J. Halliday,
 Commissioner, Michigan Territory, 1832