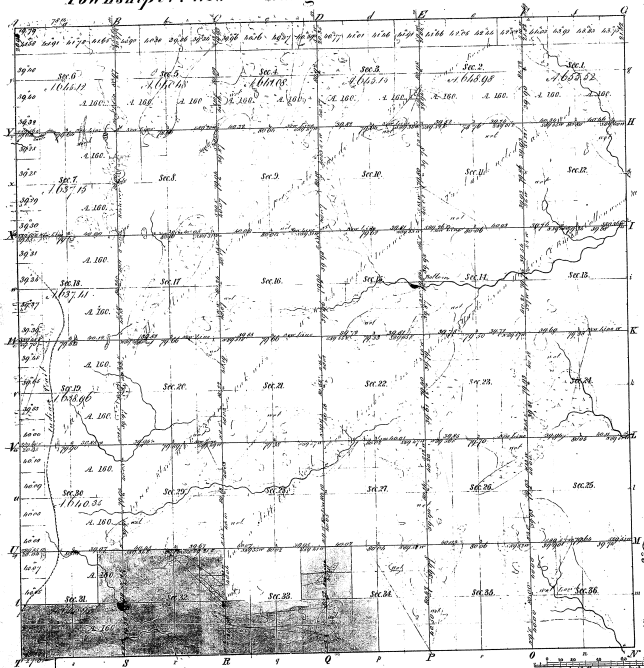


Re-measurement of
Township 1st 41ⁿ **Range 2nd 2nd W.** **Mer. Mich.**



Total number of Acres 23,070.40

Survey designated	By whom Surveyed	Date of Commencement	Amount of Survey	When Surveyed	When the land was in the hands of the Surveyor
Township base	Isidore Clarke	March 12, 1850	11,700.00	1850	1850
Subdivisions	Isidore Clarke	Sept. 1850	11,370.40	1850	1850

The above map of Township 1st 41ⁿ Range 2nd 2nd W. Mer. Mich. is a strictly conformable to the full notes of the survey thereon on file in the Office, which have been examined and approved.

Surveyor General's Office
 Detroit Oct. 19, 1852

Boundaries of	Final Courses	Distances	Area	Remarks
13-39				
Note: The white shade represents the base which have been made in this township.				

13-39